

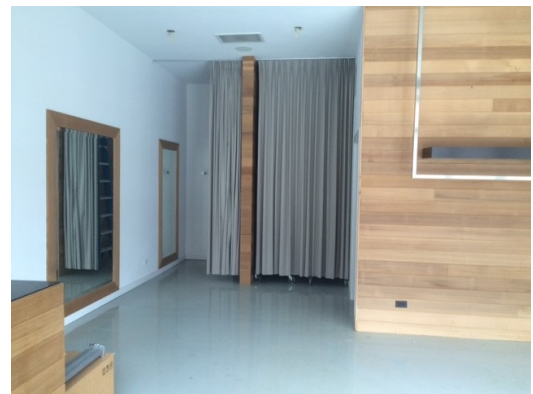
# 2028 W Division

# Wicker Park

Chicago, IL 60622

**FOR SALE** 1,237 SF

Wicker Park Commercial Retail Condo



Commercial Condo with Division Street Frontage in  
Heart of Wicker Park

**MILLER**  
**CHICAGO**  
[www.millerchicagorealestate.com](http://www.millerchicagorealestate.com)

Andrea Miller  
312 513 8333  
[Andrea@millerchicagorealestate.com](mailto:Andrea@millerchicagorealestate.com)

# Property Highlights

## 2028 W Division

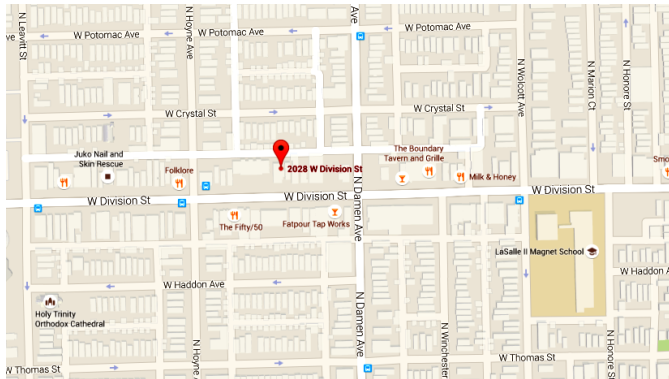
# Wicker Park

Chicago, IL 60622

### DEMOGRAPHICS

(2013 Estimates)

	1 Mile	3 Mile
Population	56,696	422,258
Households	31,967	230,987
Average Income	\$86,213	\$83,651



Price: \$525,000

Listing Type: For Sale

Property Type: Retail

Taxes: \$10,242 (2013)

ASF: 1,237 Sq Ft

Zoning: B3-2

Parking: Street Parking

Alderman: Moreno

### Highlights:

- ⇒ Commercial condo with large floor to ceiling windows
- ⇒ 2011 construction by award-winning “Ranquist Development Group”
- ⇒ 1 ADA bathroom
- ⇒ Incredible visibility with ~40 feet of frontage on Division Street
- ⇒ High foot traffic in one of Chicago’s most popular neighborhoods
- ⇒ Near public transportation & within blocks of the heart of Wicker Park / Bucktown
- ⇒ Nearby commercial retail includes: Fatpour Tap Works, Dunkin Donuts, Super Cuts, Jimmy John’s Gourmet Sandwiches, Doggy Style Pet Shop, Nando Milano Trattoria, Takito Kitchen

Chicago, IL 60622



Andrea@millerchicagorealestate.com