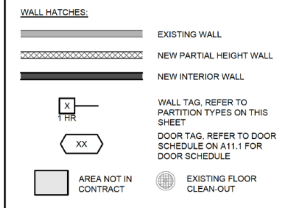
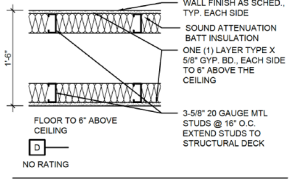
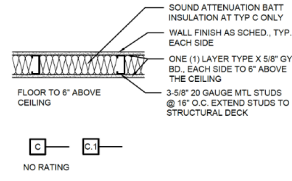
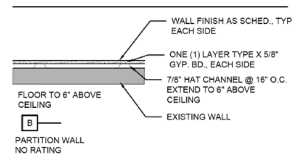
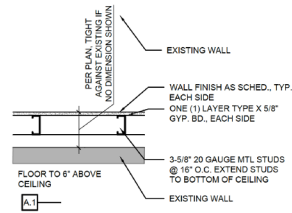


**FLOOR PLAN SYMBOL LEGEND**



**FLOOR PLAN KEYED NOTES**

01 PROVIDE FLOORING AT CONCRETE CURB BELOW STOREFRONT. 2-1/2" METAL STUDS 16" OC WITH 5/8" TYPE X GYP. BD. & BATT INSULATION FULL WIDTH OF STUD.



**NOTE:**  
 PROVIDE WATER RESISTANT GYP BD AT ALL WET AREAS & WET WALLS IN LIEU OF GYP BD.  
 PROVIDE CEMENT BOAR AT WALLS TO RECEIVE TILE FINISH IN LIEU OF GYP BD.  
 PROVIDE FRIT BLOCKING AS REQUIRED FOR ALL WALL MOUNTED ITEMS.

**O'Kelly Kasprak**  
 architects interior design project management  
 840 West Adams Street  
 Suite 300  
 Chicago, Illinois 60607  
 (312) 962-6977  
 www.okellykasprak.com

These drawings are copyrighted and are subject to copyright protection, as an architectural work, under Sec. 102 of the Copyright Act, 17 U.S.C. as amended December 1990 and known as Architectural Works Copyright Protection Act of 1990. The protection includes but is not limited to the overall form as well as the arrangement and composition of spaces and elements of the design. Under such protection, unauthorized use of these drawings or work can legally result in the cessation of construction or buildings being seized and / or monetary compensation to O'Kelly Kasprak LLC.

**FIFIELD CO.**  
**TENANT DEMISING**  
 3462 N Lincoln  
 3462 N Lincoln  
 Chicago, Illinois 60657

...	...	...
...	...	...
...	...	...
...	...	...
OWNER REVIEW	11/18/22	
No.	Description	Date
	Record	
PROJECT NO.	22.21-102	

FOR DESIGN INTENT ONLY - NOT FOR CONSTRUCTION

FLOOR PLAN

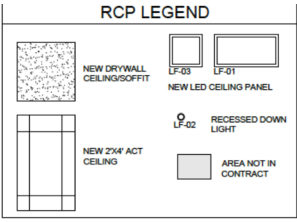
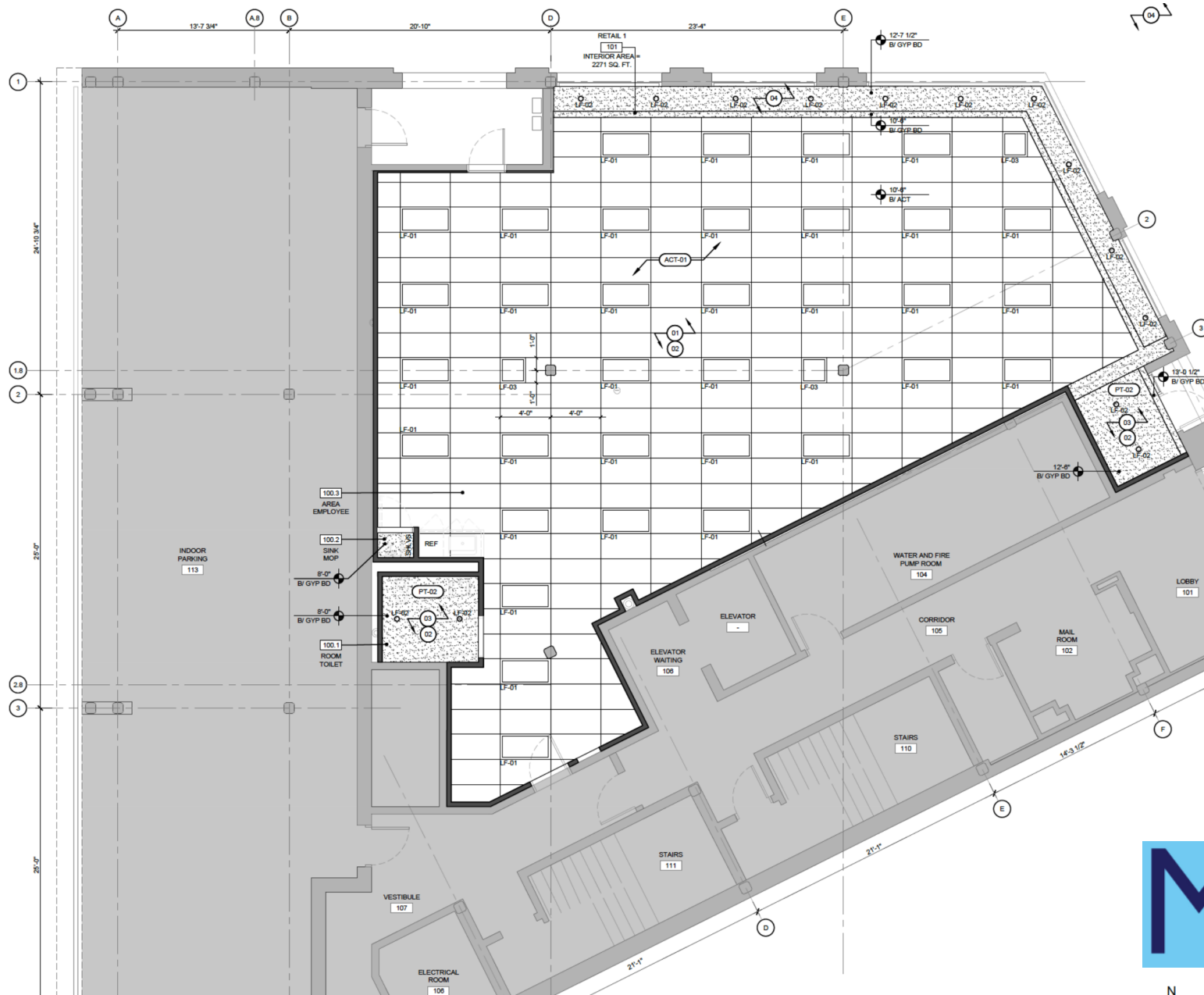
**A1.1**  
 DRAWING NO.

**1 FLOOR PLAN**  
 SCALE: 1/4"=1'-0"



**PT PARTITION TYPES**  
 SCALE: NTS





- REFER TO A11.1 FOR FINISH & LIGHT FIXTURE SCHEDULES
- ### RCP KEYED NOTES
- 01 NEW 2'x4' ACT CEILING GRID, REFER TO FINISH SCHEDULE FOR MORE INFORMATION
  - 02 RELOCATE EXISTING SPRINKLER HEADS AS NEEDED TO ACCOMMODATE NEW CEILING. REFER TO MEP DRAWINGS.
  - 03 NEW GYP BD CEILING.
  - 04 NEW GYP BD SOFFIT.

**O'Kelly Kasprak**  
 ARCHITECTURE INTERIOR DESIGN PROJECT MANAGEMENT  
 940 West Adams Street  
 Suite 300  
 Chicago, Illinois 60607  
 (312) 962-5977  
 www.okellykasprak.com

These drawings are copyrighted and are subject to copyright protection as an "architectural work" under Sec. 102 of the Copyright Act, 17 U.S.C. as amended December 1990 and known as Architectural Works Copyright Protection Act of 1990. The protection includes but is not limited to the overall form as well as the arrangement and composition of spaces and elements of the design. Under such protection, unauthorized use of these drawings or work can legally result in the cessation of construction of buildings being seized and / or monetary compensation to O'Kelly Kasprak LLC.

**FIFIELD CO.  
 TENANT DEMISING**  
 3462 N Lincoln  
 3462 N Lincoln  
 Chicago, Illinois 60657

No.	Description	Date
	Record	
OWNER REVIEW		11/18/22

PROJECT NO.  
22.21-102

FOR DESIGN INTENT ONLY - NOT FOR CONSTRUCTION

REFLECTED CEILING PLAN

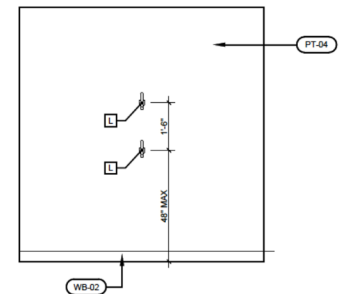
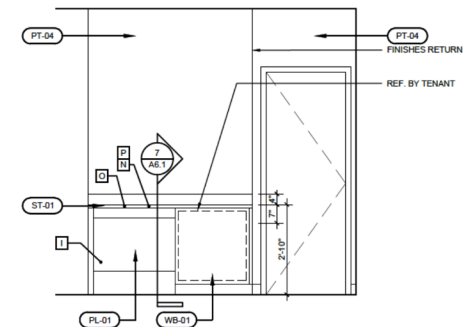
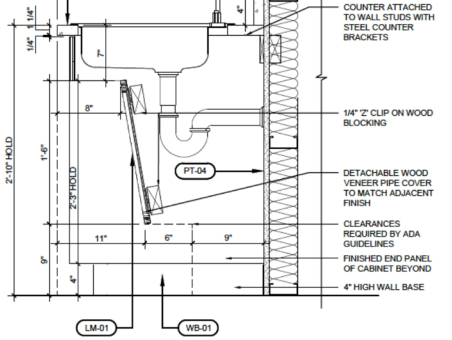
**A2.1**  
DRAWING NO.



**1 REFLECTED CEILING PLAN**  
SCALE: 1/4"=1'-0"

**RESTROOM ACCESSORIES SCHEDULE**

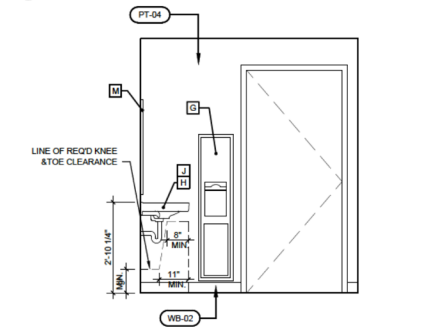
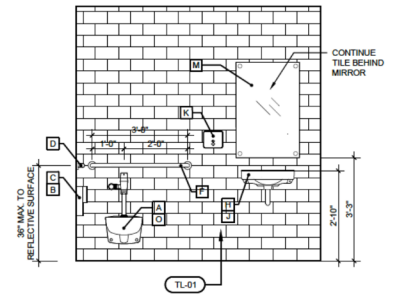
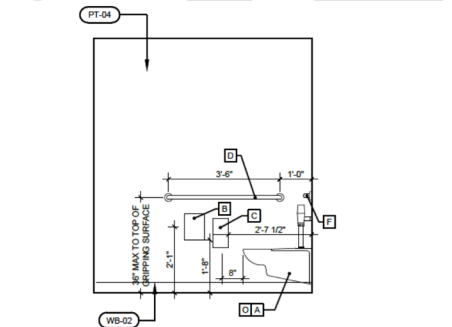
CODE	ITEM	MANUF.	MODEL	COLOR/FINISH	COMMENTS
A	TOILET (ADA COMPLIANT)	AMERICAN STANDARD	FIXTURE: AFWALL FLOWISE 1.28 GPF ELONGATED ONE-PIECE TOILET WITH MANUAL FLUSH VALVE, WALL MOUNTED SEAT MODEL #895-110 CARRIER FITTING (BY OTHERS)	WHITE	
B	SURFACE MOUNTED SANITARY WIPER DISPOSAL	BOBRICK	CONTURA SERIES; B-270	STAINLESS STEEL	
C	SURFACE MOUNTED MULTI-ROLL TOILET TISSUE DISPENSER	BOBRICK	B-2888	SATIN FINISH	TOP OF DISPENSER TO BE MOUNTED AT 28" A.F.F. WITH THEFT RESISTANT TOILET TISSUE SPINDLES
D	42" GRAB BAR	BOBRICK	B-580642	SATIN FINISH	1-1/4" O.D. X 42" LONG S.S. PIPE GRAB BAR, HORIZONTAL W/ CONCEALED MOUNTING. PROVIDE FIRE RETARDANT BLOCKING AS REQ'D
E	MOP SINK	FIAT PRODUCTS	MSB 2424	STAINLESS STEEL	
F	36" GRAB BAR	BOBRICK	B-580636	SATIN FINISH	1-1/4" O.D. X 36" LONG S.S. PIPE GRAB BAR, HORIZONTAL W/ CONCEALED MOUNTING. PROVIDE FIRE RETARDANT BLOCKING AS REQ'D
G	SEM-RECESSED PAPER TOWEL DISPENSER AND WASTE RECEPTACLE	BOBRICK	TRAILLINE SERIES; B-38032	STAINLESS STEEL	TOP OF CABINET TO BE INSTALLED AT 59 3/4" A.F.F.
H	LAVATORY	AMERICAN STANDARD	9024.001EC	WHITE	20" WIDE X 18" DEEP DECORUM WALL-MOUNT BATHROOM SINK, VITREOUS CHINA, WITH SINGLE CENTER FAUCET HOLE. INSULATE ALL EXPOSED PIPING UNDER LAVATORY PER ACCESSIBLE CODE.
I	KITCHEN COUNTER BASE	ALLEN ROTH	CUSTOMIZED (W 62" X H 38" X D 24") SAMPLE NUMBER: 133205	STONE (PAINTED GRAY)	
J	FAUCET	AMERICAN STANDARD	2064.155	POLISHED CHROME	SINGLE-HOLE MOUNTED ELECTRONIC FAUCET, STATIONARY SPOUT, ADA COMPLIANT 1.5 GPM/PCA, VR MULTILAMINAR SPRAY
K	SOAP DISPENSER	BOBRICK	CONTURA SERIES 818615	SATIN FINISH	TOP OF DISPENSER TO BE MOUNTED AT 48" A.F.F.
L	COAT HOOK	BOBRICK	B-6827	SATIN FINISH	MOUNTING PLATE INSTALLED @ 36"-48" MAX. A.F.F.
M	MIRROR	AMERICAN STANDARD	24" X 36" BRASSLESS	STAINLESS STEEL	INSTALLED WITH 1/2" ROUND STANDOFF AT EACH CORNER
N	KITCHEN SINK	AMERICAN STANDARD	1-1/2" SINGLE DOUBLE BOWL KITCHEN SINK	STAINLESS STEEL	
O	KITCHEN COUNTERTOP	FORMICA (SUB-BRAND FORMICA)	FORMICA 72-8847-0013 2.5 IN. OURO RED AND ETCHINGS STRAIGHT LAMINATE COUNTERTOP WITH INTEGRATED BACKSPASH	OFF WHITE/ ETCHINGS	
P	KITCHEN FAUCET	PEERLESS	MODEL 185121L FAUCET BODY CONSTRUCTED OF BRASS	BRASS	FAUCET INCLUDES AN OPTIONAL ESCUTCHEON PLATE TO COVER UNUSED FAUCET HOLES



**7** SECTION DETAIL - ADA SINK EMPLOYEE AREA  
SCALE: 1/16" = 1'-0"

**6** INTERIOR ELEVATION - TYPICAL  
SCALE: 1/2" = 1'-0"

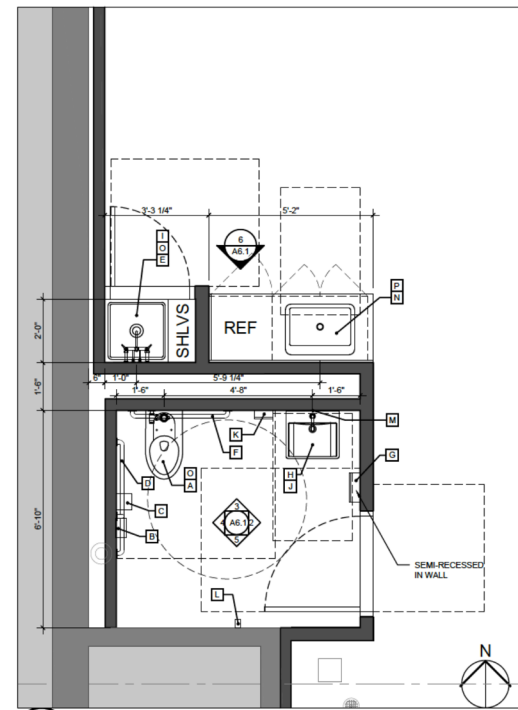
**5** INTERIOR ELEVATION - TYPICAL  
SCALE: 1/2" = 1'-0"



**4** INTERIOR ELEVATION - TYPICAL  
SCALE: 1/2" = 1'-0"

**3** INTERIOR ELEVATION - TYPICAL  
SCALE: 1/2" = 1'-0"

**2** INTERIOR ELEVATION - TYPICAL  
SCALE: 1/2" = 1'-0"



**1** ENLARGED PLAN - TOILET RM 100.1  
SCALE: 1/4" = 1'-0"

- GENERAL NOTES**
- REFER TO FINISH SCHEDULE, SHEET A11.2, FOR FINISH INFORMATION
  - REFER TO SHEETS G3.0 & G3.1 FOR STANDARD MOUNTING HEIGHTS.
  - THE G.C. SHALL PREPARE WALL, FLOOR, AND CEILING SURFACES AS REQUIRED AND RECOMMENDED BY MANUFACTURER FOR FINISHES INDICATED ON PLAN.
  - PROVIDE ACCESS PANELS AS REQUIRED. ALL ACCESS PANELS ARE TO RECEIVE FINISH OF ADJACENT SURFACE.
  - SIGNAGE: IDENTIFY UNISEX RESTROOM PER FEDERAL ADA/AG REQUIREMENTS WALL MOUNTED SIGN ADJACENT TO DOOR LATCH SIDE (REFER TO TYPICAL ADA DETAILS). MOUNTED FROM CENTER OF SIGN 60" A.F.F. MAX., FEATURING BRAIL & PICTOGRAM. UNISEX ACCESSIBLE RESTROOM SIGN #FMC06 (FINISH: METALGRAPH COPPERPENNY) BY ADA SIGN FACTORY



**O'Kelly Kasprak**  
architect, interior design, project management  
940 West Adams Street  
Suite 300  
Chicago, Illinois 60607  
(312) 962-5877  
www.okellykasprak.com

These drawings are copyrighted and are subject to copyright protection as an "architectural work" under Sec. 102 of the Copyright Act of 1976, as amended December 1990 and known as Architectural Works Copyright Protection Act of 1990. The protection includes but is not limited to the overall form as well as the arrangement and composition of spaces and elements of the design. Under such protection, unauthorized use of these drawings or work can legally result in the cessation of construction or buildings being seized and / or monetary compensation to O'Kelly Kasprak LLC.

**FIFIELD CO.  
TENANT DEMISING  
3462 N Lincoln  
3462 N Lincoln  
Chicago, Illinois 60657**

OWNER REVIEW	11/19/22	
No.	Description	Date
	Record	

PROJECT NO. 22.21-102

FOR DESIGN INTENT ONLY. NOT FOR CONSTRUCTION

**ENLARGED PLANS & INTERIOR ELEVATIONS**

**A6.1**  
DRAWING NO.