

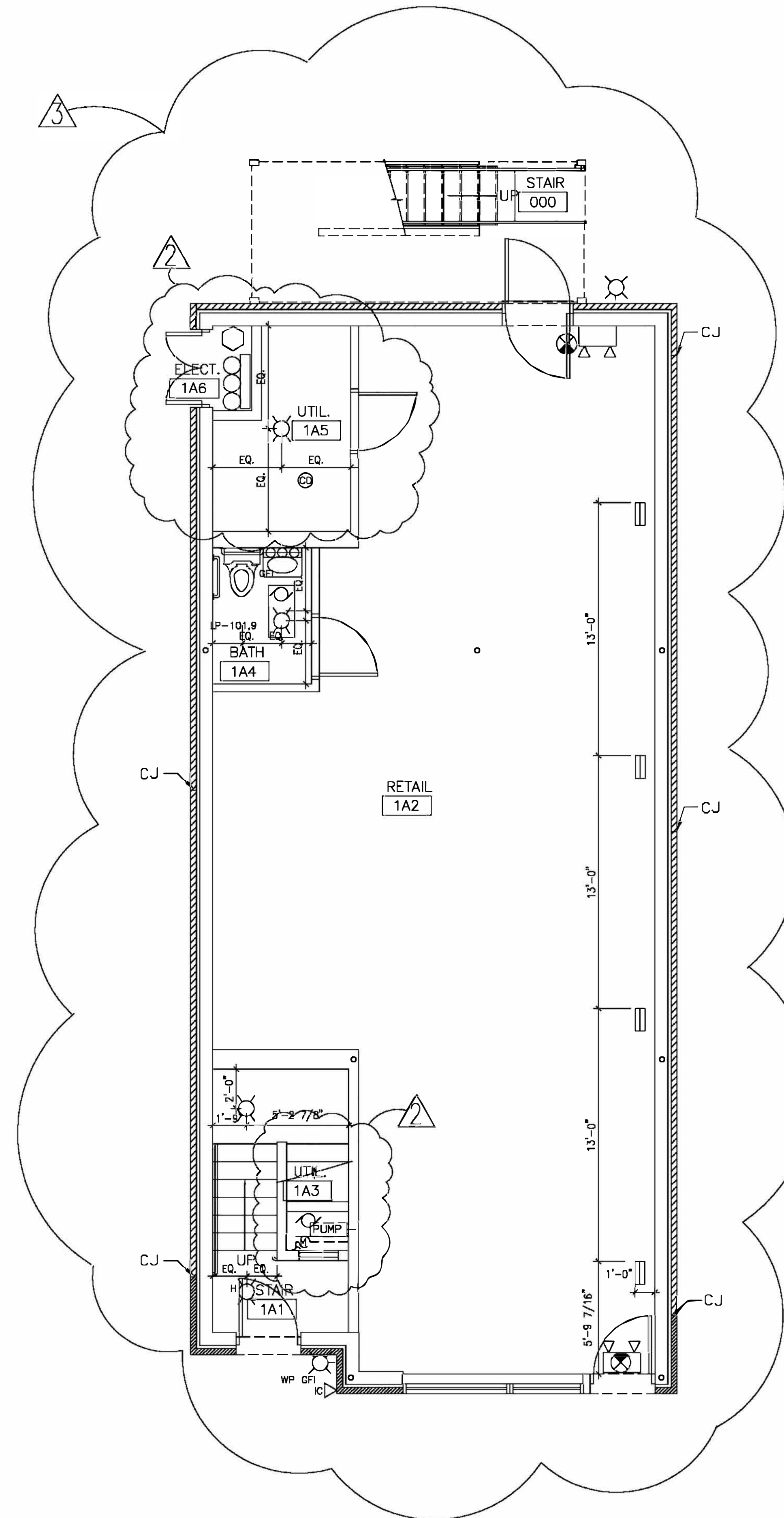
**PERMIT NOTES**

1. TRAVEL DISTANCES ARE TYPICAL FOR UNIT.
2. ALL DOORS ARE TO BE KEYLESS IN DIRECTION OF EGRESS.
3. ALL FIRE RATED DOORS AND UNIT ENTRY DOORS AND TO BE SELF-CLOSING.
4. ALL GLAZED DOORS AND ANY GLAZED PANEL MORE THAN 18 INCHES IN WIDTH ADJACENT TO ANY DOOR WHEREIN THE SILL IS LESS THAN 24 INCHES ABOVE THE FLOOR SHALL BE TEMPERED.
5. ALL INTERIOR WALL AND CEILING FINISHES AND TRIM SHALL BE CLASS 1. ALL FLOOR COVERINGS SHALL BE CLASS A.
6. NOT LESS THAN ONE APPROVED SMOKE DETECTOR SHALL BE INSTALLED IN EVERY DWELLING UNIT. DETECTORS SHALL BE LOCATED WITHIN 15 FEET OF ALL ROOMS USED FOR SLEEPING, AND WITH NOT LESS THAN ONE DETECTOR PER LEVEL.

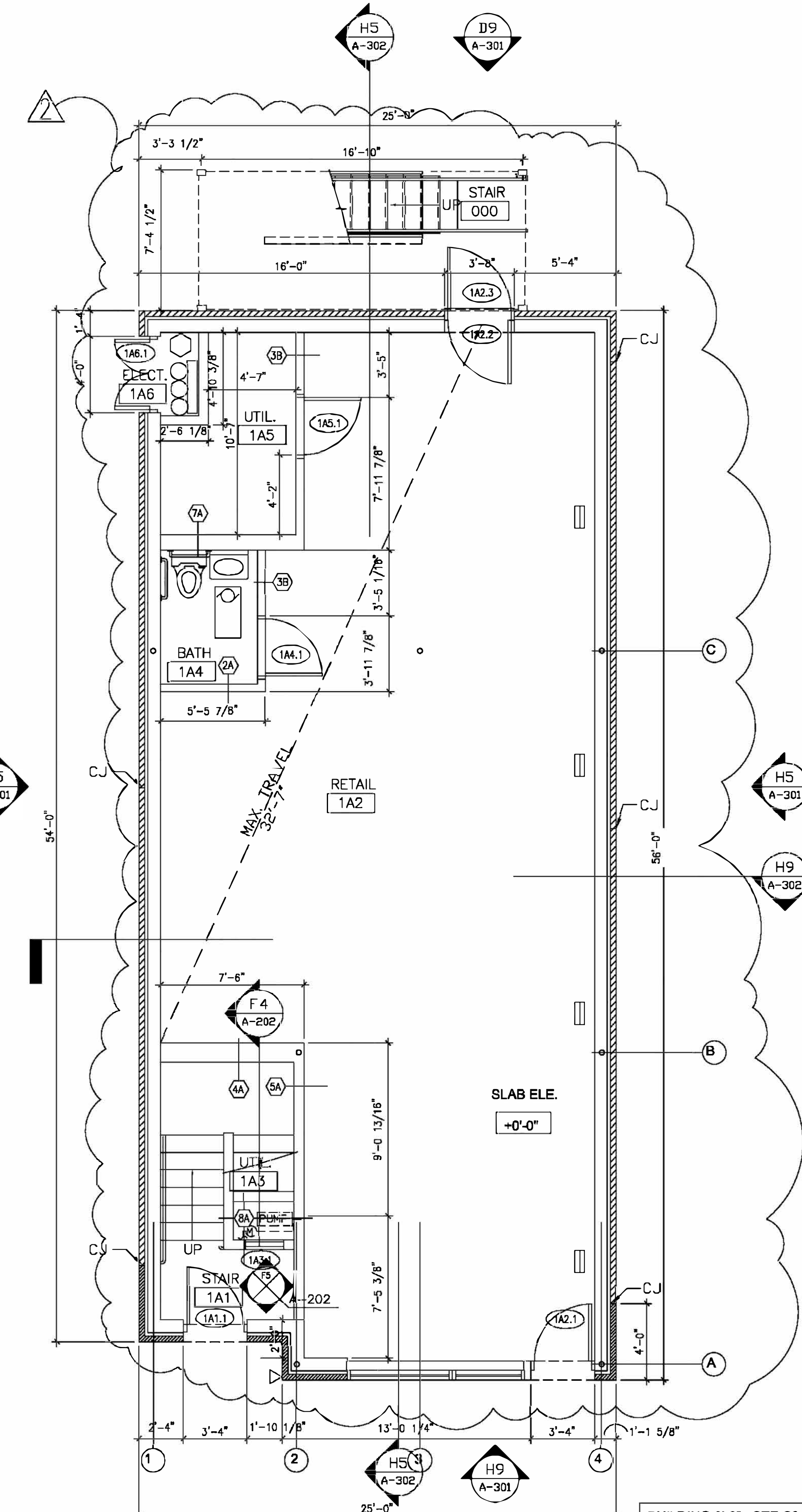
**GENERAL NOTES (CONTINUED)**

6. COORDINATE LOCATIONS OF FLOOR DRAINS AND CLEAN OUTS WITH PLUMBING DRAWINGS. REVIEW LOCATIONS WITH ARCHITECT PRIOR TO START OF UNDERGROUND PLUMBING. PROVIDE ACCESS PANELS WHERE CLEANOUTS ARE CONCEALED BY WALL OR CEILING CONSTRUCTION. PROVIDE FIRE RESISTANCE RATED PANELS WHEN LOCATED IN RATED CONSTRUCTION ASSEMBLIES.
7. RECESSED AND SURFACE MOUNTED MECHANICAL AND ELECTRICAL ELEMENTS SUCH AS DIFFUSERS, LIGHT FIXTURES, DETECTORS, ALARMS, ETC. SHALL BE LOCATED IN ACCORDANCE WITH THE ARCHITECTURAL DRAWINGS AND MOUNTING HEIGHTS ON SHEET G-003. SEE MECHANICAL AND ELECTRICAL DRAWINGS FOR QUANTITIES AND TYPES OF FIXTURES AND ELEMENTS.
8. LIGHT FIXTURES FOR GENERAL ROOM LIGHTING SHALL BE CENTERED IN THE ROOM UNLESS NOTED OTHERWISE. NOTIFY ARCHITECT OF ANY CONFLICTS WITH STRUCTURE.
9. PROVIDE BLOCKING FOR FUTURE AND INSTALLED GRAB BARS, HANDRAILS, DOOR STOPS, WINDOW TREATMENTS, CABINETS, CLOSET SHELVING, WALL-HUNG LAVATORIES, BATHROOM ACCESSORIES, ETC.

10. KNURLED HARDWARE @ UTILITY ROOM



**H6 FIRST FLOOR REFLECTED CEILING PLAN**  
SCALE: 1/4"=1'-0"



**H3 FIRST FLOOR PLAN**  
SCALE: 1/4"=1'-0"

BUILDING 0'-0"= SEE S3 FOR CCD COORDINATION SEE SPECIFIC BUILDING LOCATIONS ON THE SITE PAVING AND GRADING PLAN

**General Notes**

**REFERENCES**

1. SEE SHEET G-001 FOR TYPICAL GENERAL NOTES IN ADDITION TO THOSE BELOW.
2. SEE SHEET G-002 FOR BUILDING CODE MATRIX FOR REQUIRED FIRE RESISTANCE RATINGS OF CONSTRUCTION ASSEMBLIES. SEE FLOOR PLANS AND BUILDING SECTIONS FOR APPLICABLE UL FIRE RESISTANCE RATED ASSEMBLY NUMBERS.
3. SEE SHEET G-003 FOR ACCESSIBLE/ADAPTABLE MOUNTING HEIGHTS AND PLAN LOCATIONS OF MISCELLANEOUS ARCHITECTURAL, PLUMBING, MECHANICAL AND ELECTRICAL ITEMS.
4. SEE LARGE SCALE PLANS, ELEVATIONS, SECTIONS, AND DETAILS KEYED TO THE PLAN. LARGER SCALE DRAWINGS TAKE PRECEDENCE OVER SMALLER SCALE DRAWINGS.
5. SEE SHEET A501 FOR PARTITION AND BEARING WALL TYPES.
6. SEE SHEET A502 FOR ROOM FINISH SCHEDULE, FLOOR MATERIAL TRANSITION DETAILS, AND MISCELLANEOUS INTERIOR DETAILS.
7. SEE SHEET A503 FOR DOOR AND FRAME SCHEDULE, DOOR AND WINDOW TYPES, AND DOOR FRAME DETAILS.

**LAYOUT**

1. TOP OF SLAB ELEVATION AT FIRST FLOOR IS 0'-0". SEE CIVIL ENGINEERING DRAWINGS FOR CITY OF CHICAGO DATUM REFERENCES.
2. EXTERIOR DIMENSIONS ARE TO FACE OF MASONRY.
3. INTERIOR DIMENSIONS ARE TO FACE OF FINISH UNLESS NOTED OTHERWISE.
4. LOCATE DOOR IN ACCORDANCE WITH TYPICAL JAMB DETAILS.
5. CENTER CLOSET DOORS IN PARTITION ON ROOM SIDE UNLESS LOCATED BY DIMENSIONS.

(CONTINUED ON SHEET)

No.	Description	Date
7	ISSUED FOR CONSTRUCTION REV'D	05-10-04
6	ADDENDUM #1	03-22-04
5	ISSUED FOR CONSTRUCTION	03-05-04
4	ISSUED FOR PERMIT	02-05-04
3	ISSUED FOR OIC REVIEW	01-27-04
2	ISSUED FOR PART II	01-23-04
1	ISSUED FOR BID	12-17-03

**ROOSEVELT SQUARE PHASE 1**  
1214-1216 W. TAYLOR ST. CHICAGO, IL.

**BUILDING TYPE 15 ROOSEVELT SQUARE I LIMITED PARTNERSHIP**



DAVID MASON AND ASSOCIATES  
STRUCTURAL ENGINEERS  
H.M.S. ENGINEERS  
M.E.P.F.P. ENGINEERS  
DESTEFANO KEATING PARTNERS, LTD.  
MASTER PLANNER / ARCHITECT  
MCCLIER CORPORATION  
CIVIL ENGINEERS  
WOLFF CLEMENTS AND ASSOCIATES, LTD.  
LANDSCAPE ARCHITECTS

**Drawing Title**  
FIRST FLOOR PLAN AND REFLECTED CEILING PLAN

Drawn	Date
KW/BH	12/15/2003
Checked By	Drawing Number
BH	
Approved	
ES	
Job Number	15-A101
040503	