

DOB STAMP

NO.	REVISION/SUBMISSIONS	DATE
	FOR ZONING	-/-/-
	FOR PERMIT	-/-/-
DRAWN BY: --		CHECKED BY: JJ

SEAL

ENGINEER

LOCATION:
GARLIC AND CHILI
 1512 N. LASALLE DR
 CHICAGO, IL 60610

Chicago Building Design, P.C.
 770 N. LaSalle St. Suite 801, Chicago, Illinois 60654
 3241 St. Thomas Street, New Orleans, LA 70115
 p. 312.482.9007 f. 312.482.9044 e. info@cbdarchitects.com

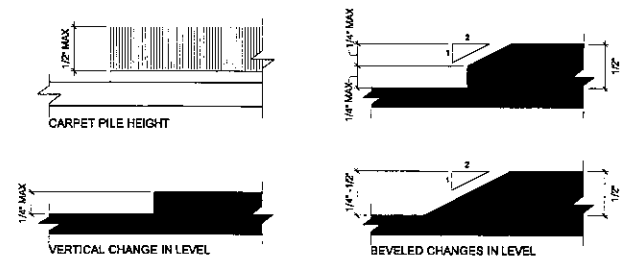
DRAWING TITLE:
SITE PLAN

CBD ARCHITECTS

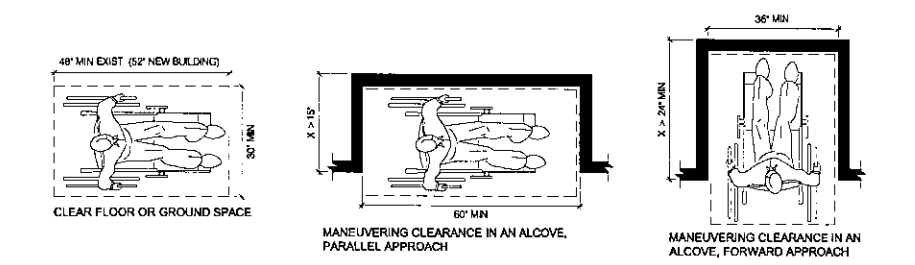
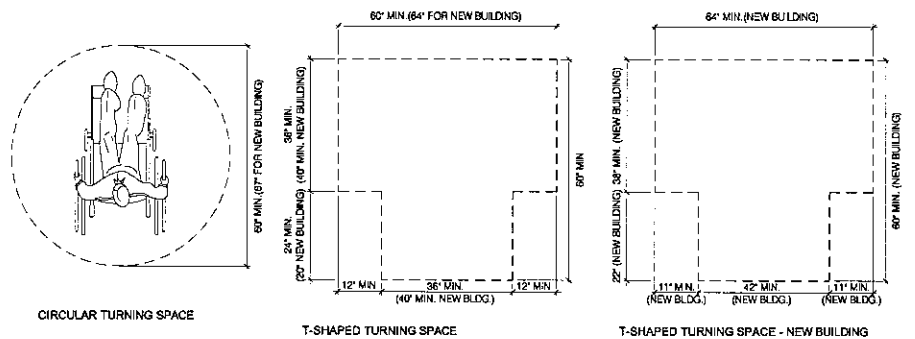
PROJECT: **17-C-50**

MTG 1/18/18

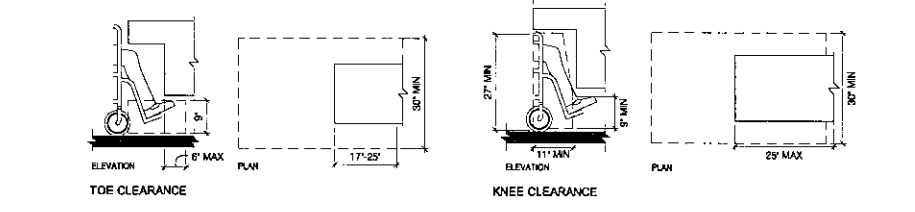
T-300.1



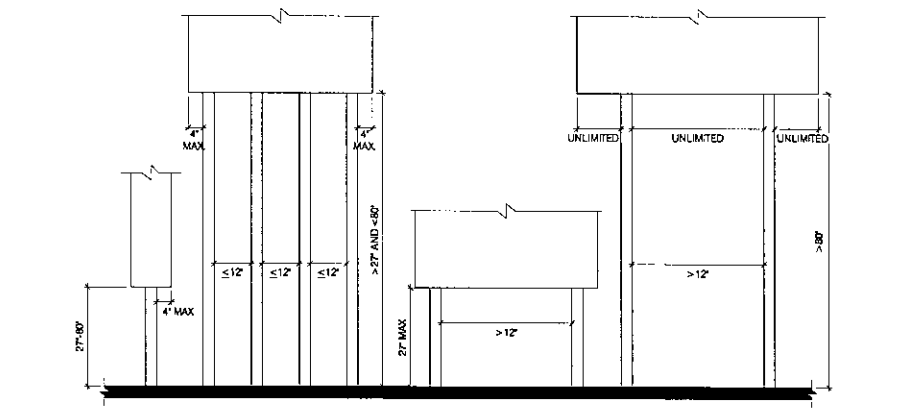
1 FLOOR OR GROUND SURFACES
SCALE: 1/2"=1'-0"



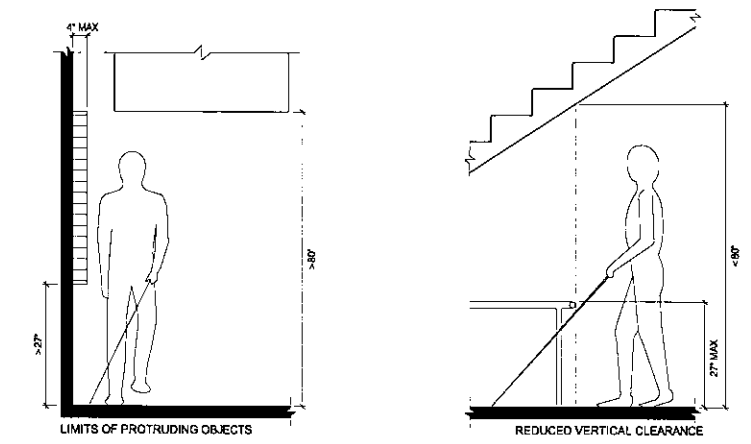
2 TURNING AND CLEAR FLOOR SPACE
SCALE: 1/2"=1'-0"



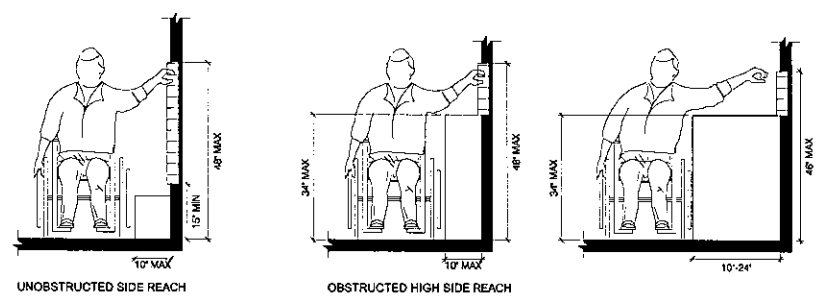
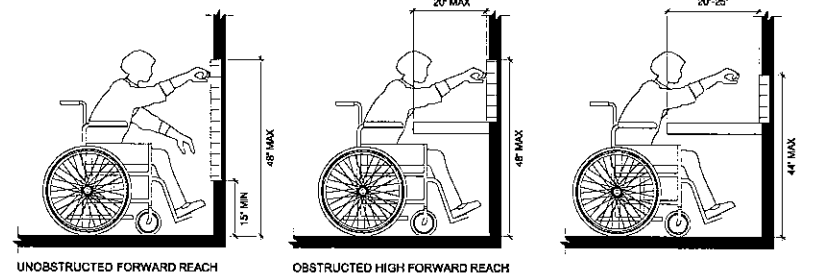
3 KNEE AND TOE CLEARANCE
SCALE: 1/2"=1'-0"



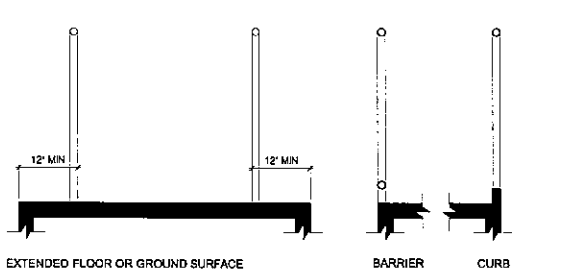
4 POST MOUNTED PROTRUDING OBJECTS
SCALE: 1/2"=1'-0"



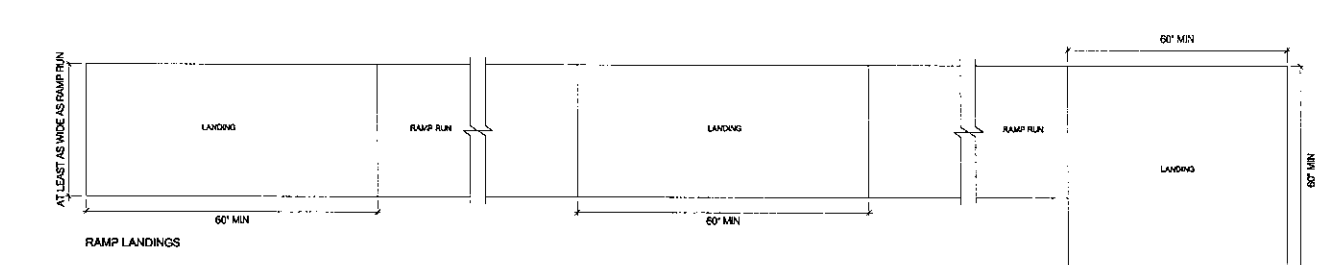
5 PROTRUDING OBJECTS
SCALE: 1/2"=1'-0"



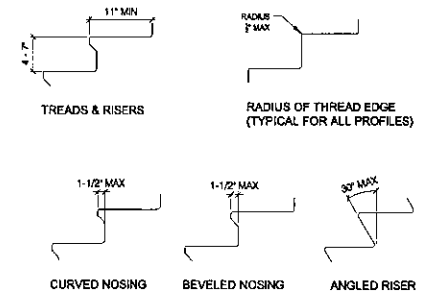
6 REACH RANGES
SCALE: 1/2"=1'-0"



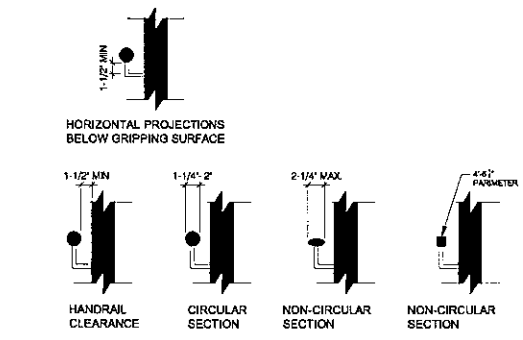
7 RAMPS - BARRIERS & CURBS
SCALE: 1/2"=1'-0"



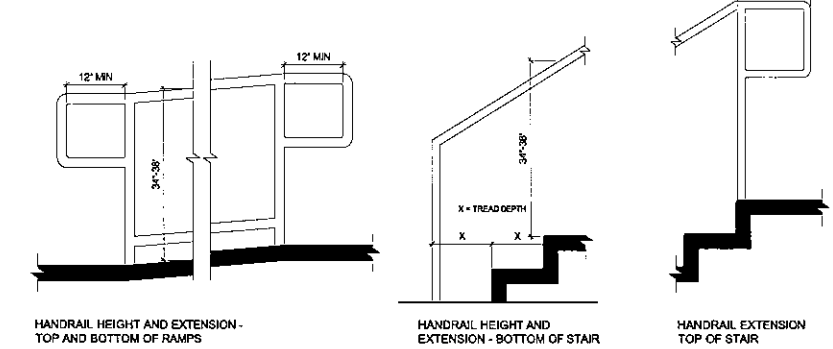
8 RAMPS - LANDINGS
SCALE: 1/2"=1'-0"



9 STAIRS
SCALE: 1/2"=1'-0"



10 HANDRAILS - CLEARANCES & CROSS SECTIONS
SCALE: 1/2"=1'-0"



11 HANDRAILS - HEIGHTS AND EXTENSIONS
SCALE: 1/2"=1'-0"

DOB STAMP

NO.	REVISIONS/SUBMISSIONS	DATE
	FOR ZONING	-/-/-
	FOR PERMIT	-/-/-

DRAWN BY: -- CHECKED BY: JJ

SEAL

ENGINEER

LOCATION:
GARLIC AND CHILI
1512 N. LASALLE DR
CHICAGO, IL 60610

Chicago Building Design, P.C.
770 N. LaSalle St. Suite 801, Chicago, Illinois 60654
3241 St. Thomas Street, New Orleans, LA 70115
P: 312.482.9007 F: 312.482.9044 E: info@cbdarchitects.com

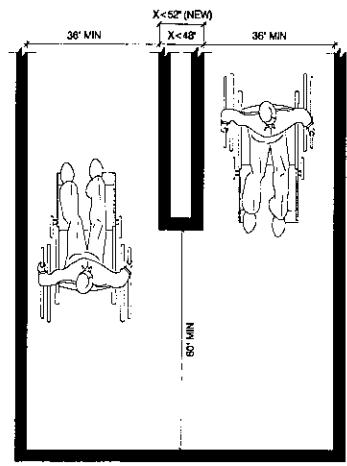
DRAWING TITLE:
ADA DETAILS

CBD ARCHITECTS

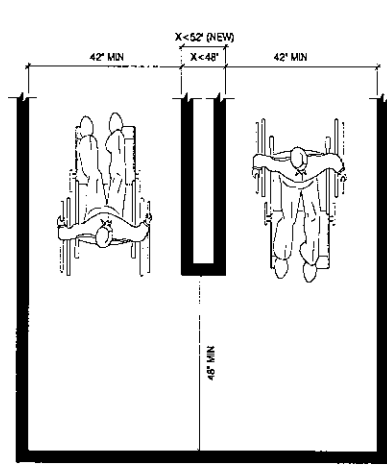
PROJECT: **17-C-50**

MTG 1/18/18

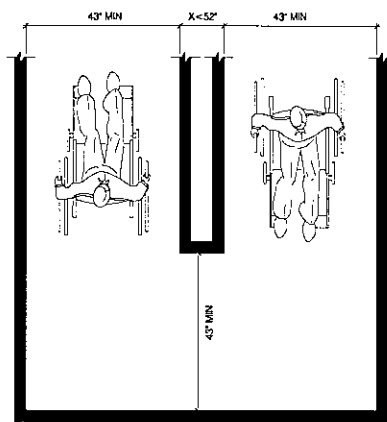
A-000.1



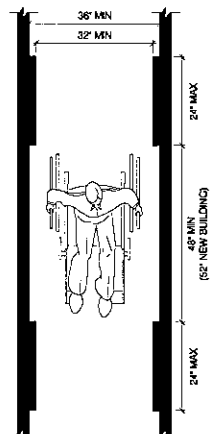
180 DEGREE TURN - OPTION 1
CLEAR WIDTH AT TURN



180 DEGREE TURN - OPTION 2

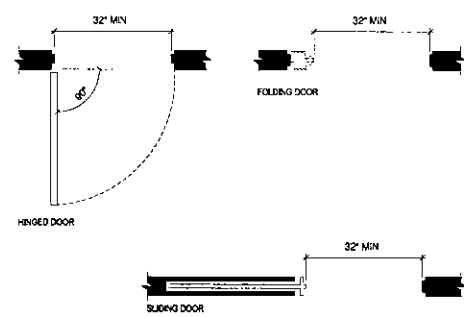


180 DEGREE TURN - OPTION FOR NEW BUILDINGS
CLEAR WIDTH AT TURN



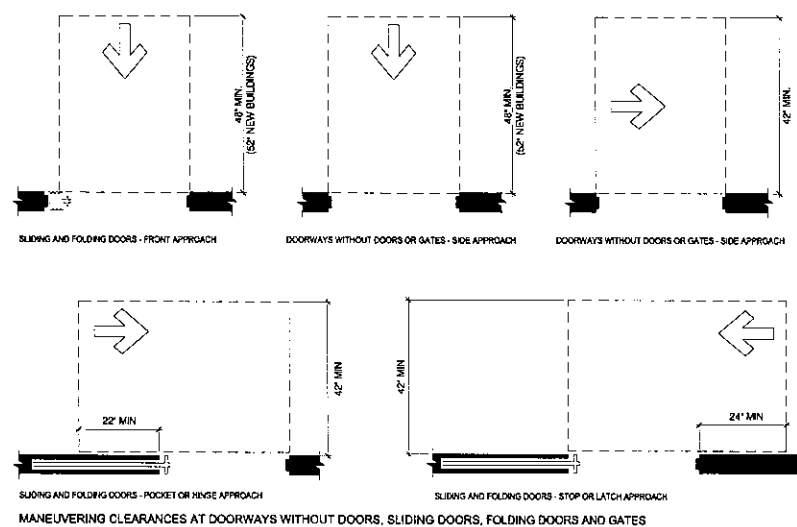
CLEAR WIDTH OF AN ACCESSIBLE ROUTE

1 CLEAR WIDTH AT ACCESSIBLE ROUTES
SCALE: 1/2"=1'-0"

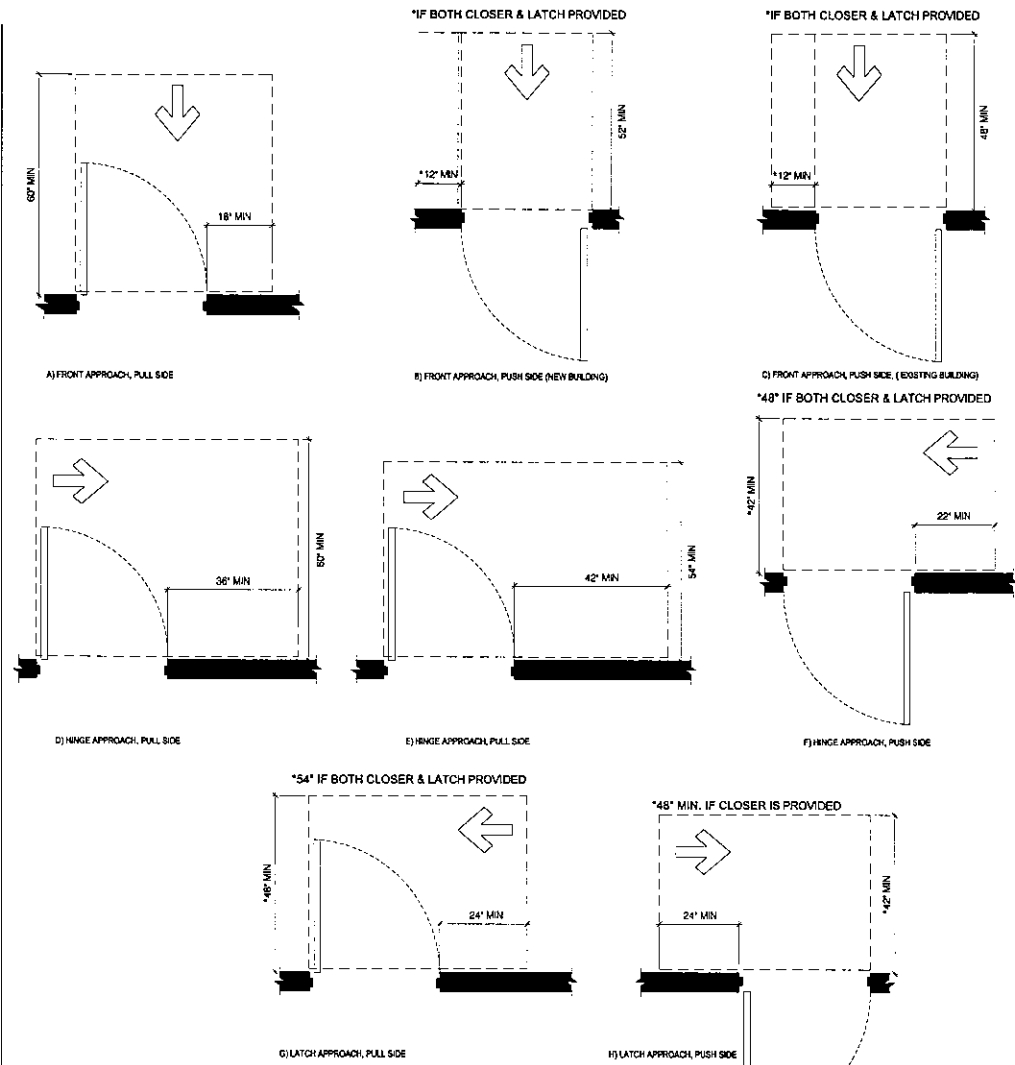


CLEAR WIDTH OF DOORWAYS

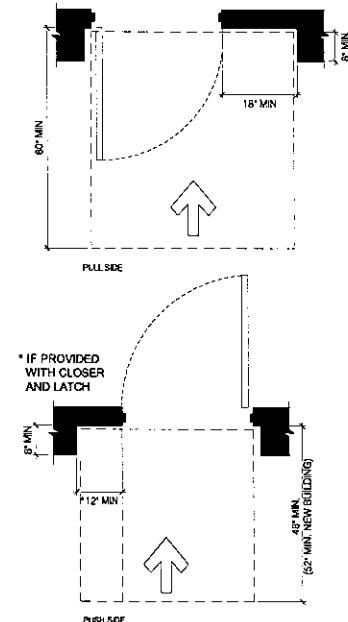
2 CLEAR WIDTH AT DOORWAYS
SCALE: 1/2"=1'-0"



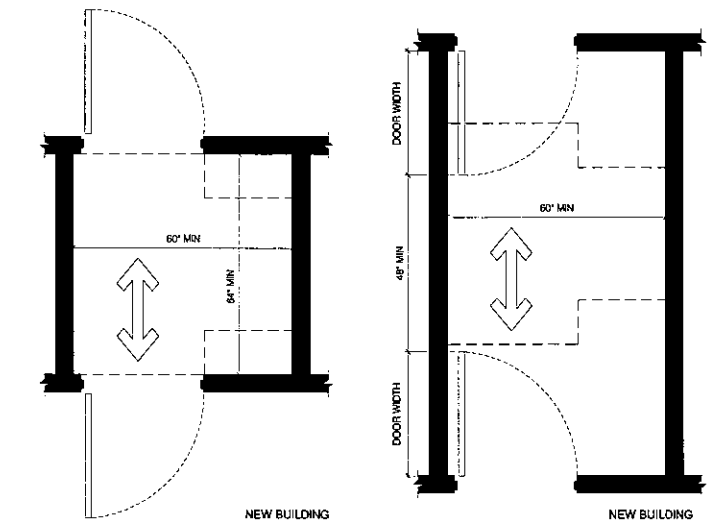
4 MANEUVERING CLEARANCE AT SLIDING AND FOLDING DOORS
SCALE: 1/2"=1'-0"



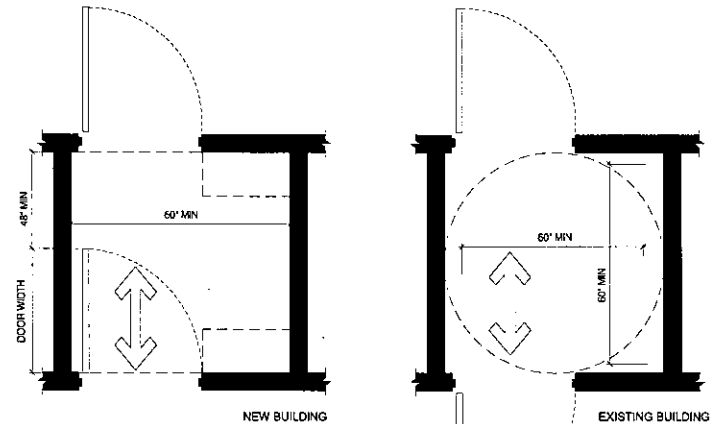
3 MANEUVERING CLEARANCE AT MANUAL SWINGING DOORS
SCALE: 1/2"=1'-0"



5 MANEUVERING CLEARANCE AT RECESSED DOORS AND GATES
SCALE: 1/2"=1'-0"

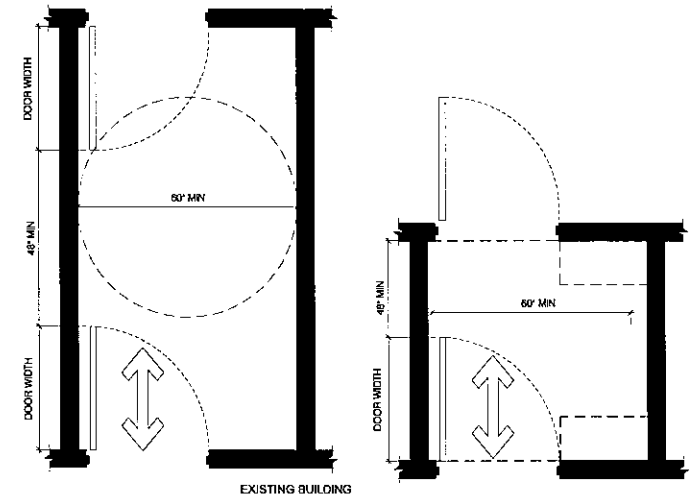


NEW BUILDING



NEW BUILDING

EXISTING BUILDING



EXISTING BUILDING

EXISTING BUILDING

6 DOORS IN A SERIES
SCALE: 1/2"=1'-0"

DOB STAMP

NO.	REVISIONS/SUBMISSIONS	DATE
	FOR ZONING	-/-/-
	FOR PERMIT	-/-/-

DRAWN BY: -- CHECKED BY: JJ

SEAL

ENGINEER

LOCATION:
GARLIC AND CHILI
1512 N. LASALLE DR
CHICAGO, IL 60610

Chicago Building Design, P.C.
770 N. LaSalle St. Suite 801, Chicago, Illinois 60654
3241 St. Thomas Street, New Orleans, LA 70115
p: 312.492.9007 f: 312.492.9044 e: info@cbdarchitects.com

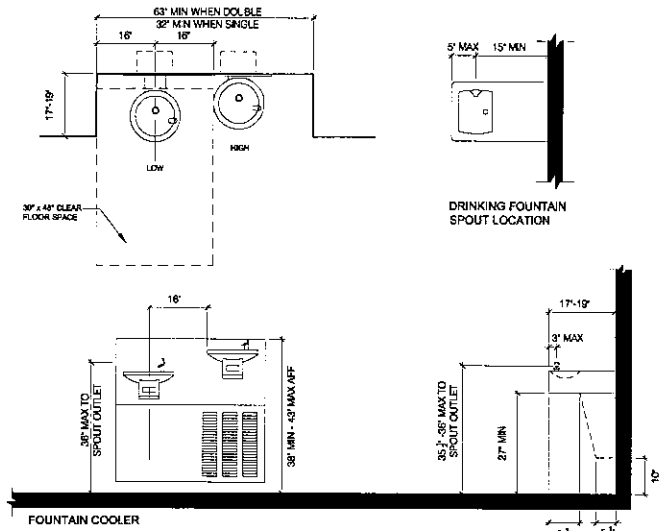
DRAWING TITLE:
ADA DETAILS

CBD ARCHITECTS

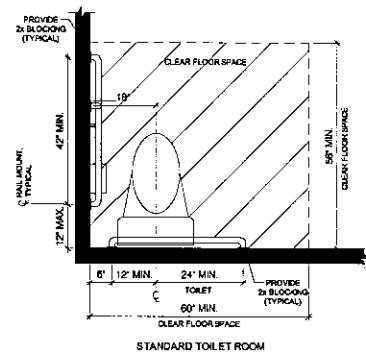
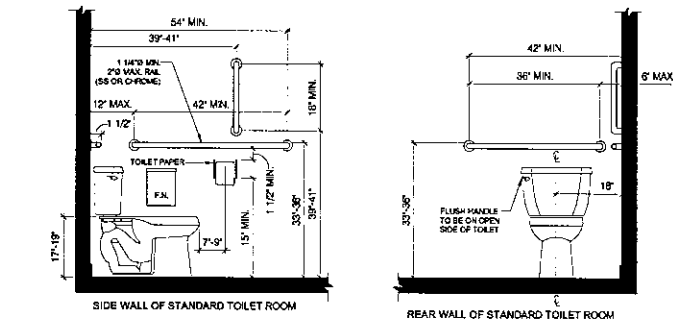
PROJECT: **17-C-50**

MTG 1/18/18

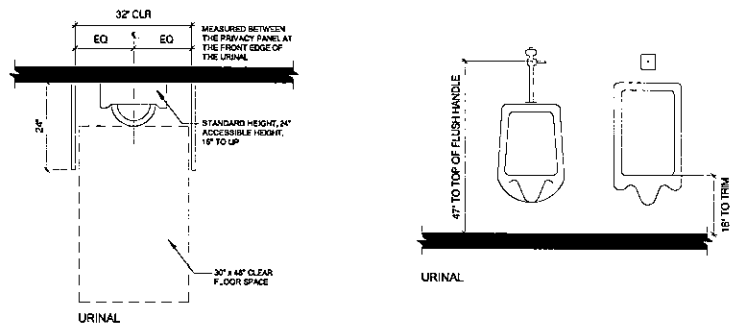
A-000.2



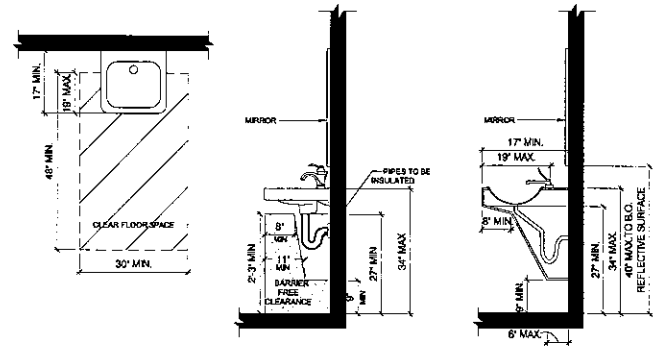
1 DRINKING FOUNTAINS
SCALE: 1/2"=1'-0"



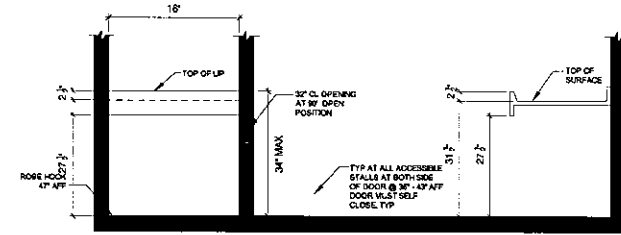
2 TOILET DETAILS
SCALE: 1/2"=1'-0"



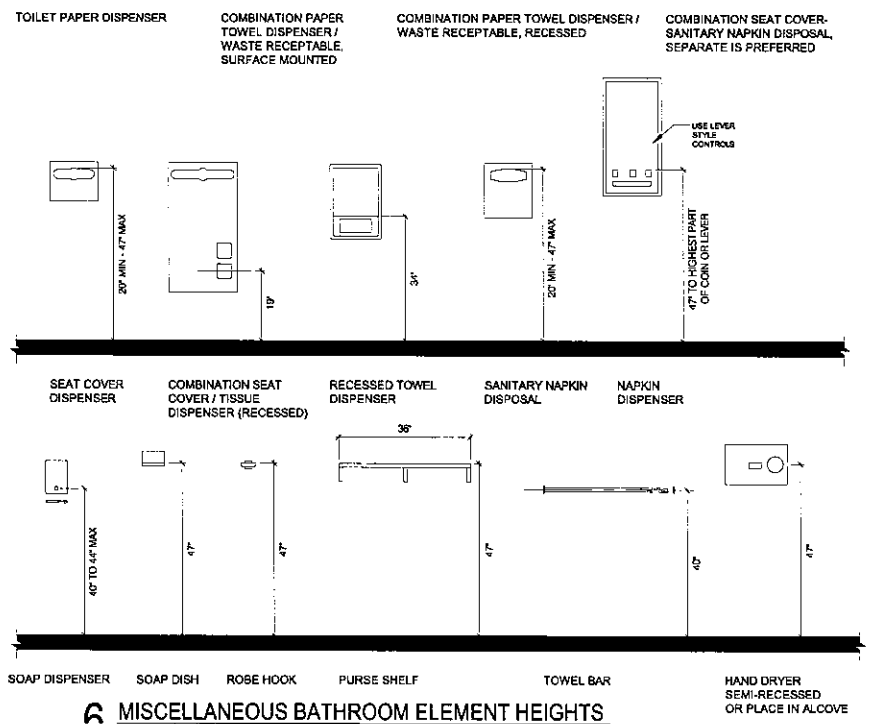
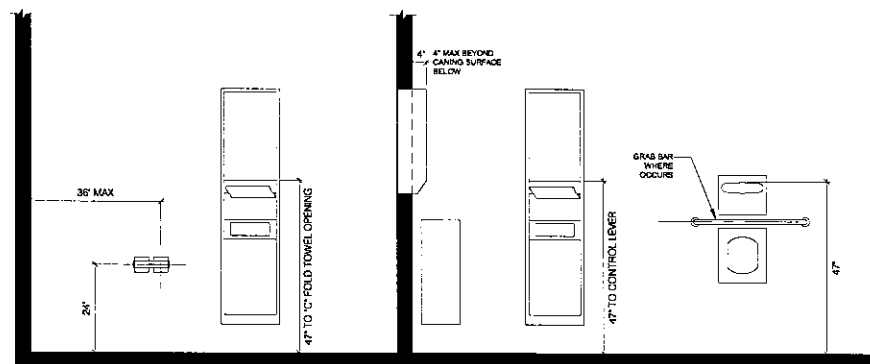
3 URINAL DETAILS
SCALE: 1/2"=1'-0"



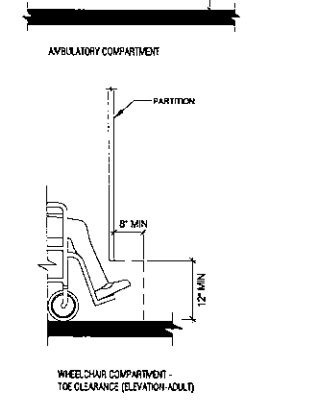
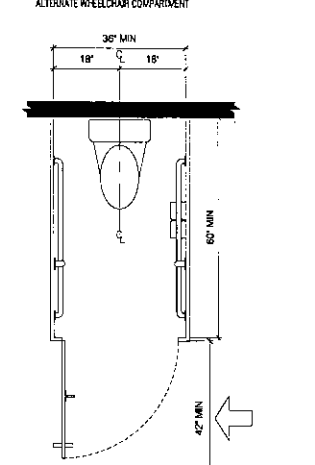
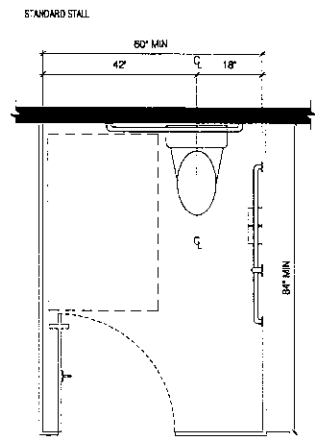
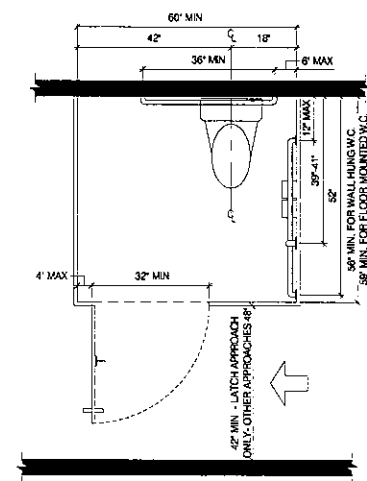
4 LAVATORY DETAILS
SCALE: 1/2"=1'-0"



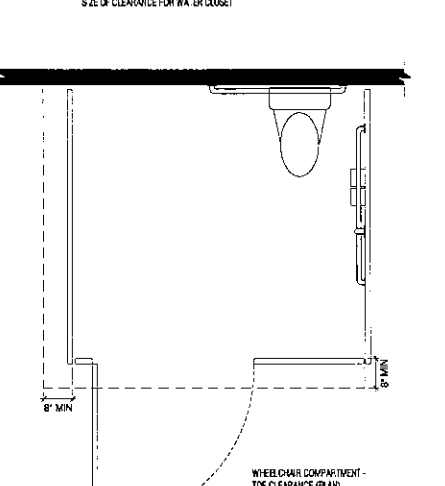
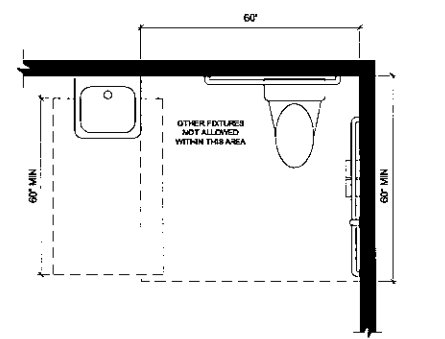
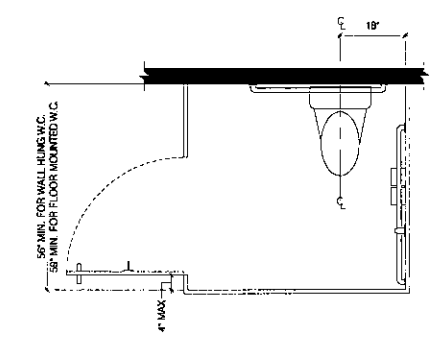
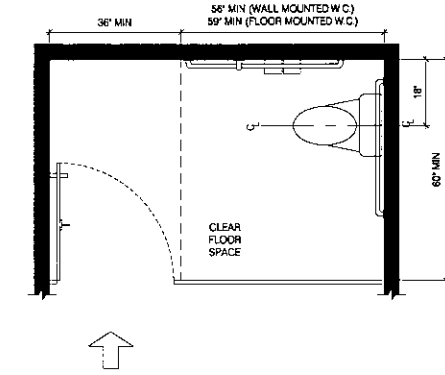
5 DIAPER CHANGE TABLE DETAILS
SCALE: 1/2"=1'-0"



6 MISCELLANEOUS BATHROOM ELEMENT HEIGHTS



7 WHEELCHAIR AND AMBULATORY ACCESSIBLE TOILET COMPARTMENTS



DOB STAMP

NO.	REVISIONS/SUBMISSIONS	DATE
	FOR ZONING	+/+/-
	FOR PERMIT	+/+/-

DRAWN BY: _____ CHECKED BY: JJ

SEAL

ENGINEER

LOCATION:
GARLIC AND CHILI
1512 N. LASALLE DR
CHICAGO, IL 60610

DRAWING TITLE:
ADA DETAILS

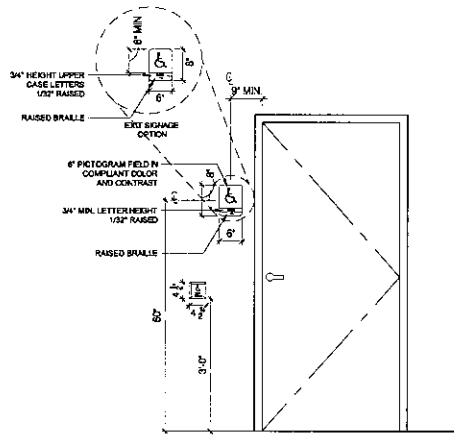
PROJECT:
17-C-50

MTG 1/18/18

A-000.3

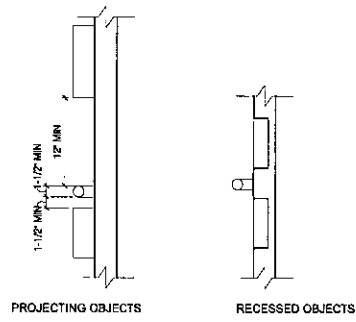
Chicago Building Design, P.C.
770 N. LaSalle St. Suite 800 Chicago, Illinois 60654
2011 St. Louis, Suite 2000 St. Louis, Missouri 63103
P: 312.462.9007 F: 312.462.9044 E: info@cbdarchitects.com

CBD ARCHITECTS

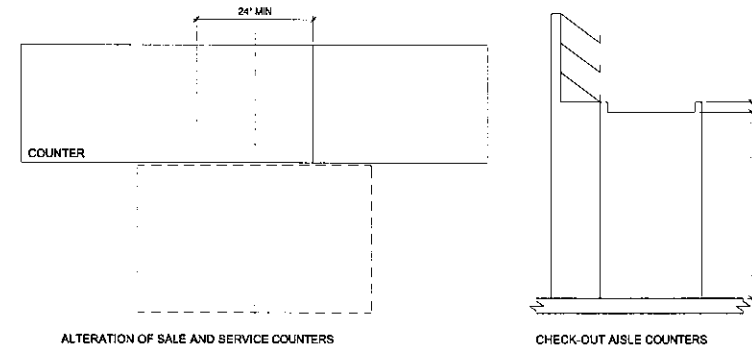


VISUAL CHARACTER HEIGHT AND 709.2.4		
HEIGHT ABOVE FLOOR TO BASELINE OF CHARACTER	HORIZONTAL VIEWING DISTANCE	MINIMUM CHARACTER HEIGHT
40 INCHES (1015 MM) TO LESS THAN OR EQUAL TO 70 INCHES (1778 MM)	LESS THAN 6 FEET (1829 MM)	5/8 INCH (15.9 MM)
	6 FEET (1829 MM) AND GREATER	5/8 INCH (15.9 MM), PLUS .06 INCH (1.5 MM) PER FOOT (305 MM) OF VIEWING DISTANCE ABOVE 6 FEET (1829 MM)
GREATER THAN 70 INCHES (1778 MM) TO LESS THAN OR EQUAL TO 120 INCHES (3050 MM)	LESS THAN 15 FEET (4572 MM)	2 INCH (51 MM)
	15 FEET (4572 MM) AND GREATER	2 INCH (51 MM), PLUS .06 INCH (1.5 MM) PER FOOT (305 MM) OF VIEWING DISTANCE ABOVE 15 FEET (4572 MM)
GREATER THAN 120 INCHES (3050 MM)	LESS THAN 21 FEET (6401 MM)	3 INCH (76 MM)
	21 FEET (6401 MM) AND GREATER	3 INCH (76 MM), PLUS .06 INCH (1.5 MM) PER FOOT (305 MM) OF VIEWING DISTANCE ABOVE 21 FEET (6401 MM)

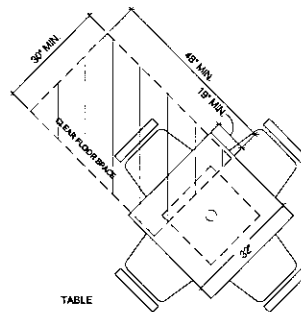
1 SIGNAGE DETAILS
SCALE: 1/2"=1'-0"



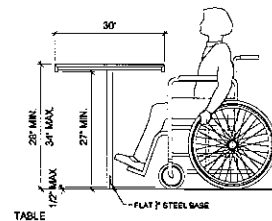
1 GRAB BARS
SCALE: 1/2"=1'-0"



3 CHECK OUT AISLES AND SALE AND SERVICE COUNTERS
SCALE: 1/2"=1'-0"

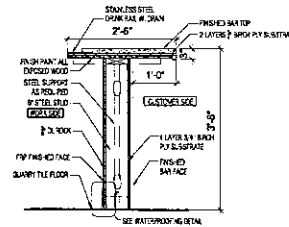


TABLE

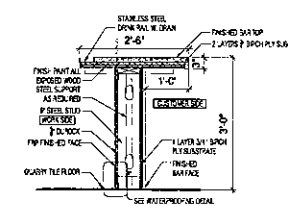


TABLE

9 TABLE AND COUNTER DETAILS
SCALE: 1/2"=1'-0"



7 TYPICAL BAR DETAIL
SCALE: 1/2"=1'-0"



7 TYPICAL ADA BAR DETAIL
SCALE: 1/2"=1'-0"

DOB STAMP

NO.	REVISIONS/SUBMISSIONS	DATE
	FOR ZONING	-/-/-
	FOR PERMIT	-/-/-

DRAWN BY: -- CHECKED BY: JJ

SEAL

ENGINEER

LOCATION:
GARLIC AND CHILI
1512 N. LASALLE DR
CHICAGO, IL 60610

Chicago Building Design, P.C.
770 N. LaSalle St., Suite 601, Chicago, IL 60610
2011 St. Theis Ave., Chicago, IL 60615
P: 312.462.8007 F: 312.462.8044 E: info@cbdarchitects.com

DRAWING TITLE:
ADA DETAILS

CBD ARCHITECTS

PROJECT: **17-C-50**

MTG 1/18/18

A-000.4

DOB STAMP

NO	REVISIONS/SUBMISSIONS	DATE
	FOR ZONING	--
	FOR PERMIT	--
DRAWN BY: --		CHECKED BY: JJ

SEAL

ENGINEER

GARLIC AND CHILI
1512 N. LASALLE DR
CHICAGO, IL 60610

Chicago Building Design, P.C.
770 N. LaSalle St., Suite 807, Chicago, Illinois 60654
3241 St. Thomas Street, New Orleans, LA 70115
p: 312.492.9807 f: 312.492.9804 e: info@cbdarchitects.com

CBD ARCHITECTS

LOCATION:

DRAWING TITLE:

PROJECT: **17-C-50**

MTG 1/18/18

A-100.1

SHEET

DEMOLITION NOTES

A. ALL DEMOLITION WORK SHALL COMPLY WITH ALL LAWS, RULES AND REGULATIONS OF GOVERNMENTAL AUTHORITIES HAVING JURISDICTION OVER THE WORK.

B. PROVIDE PROTECTION FOR PERSONS AND PROPERTY IN ACCORDANCE WITH ANS/NEPA 241.

C. PROVIDE TEMPORARY BARRIAGES, CANOPIES, FENCES, RAILING, LIGHTING, ETC. REQUIRED TO PROTECT WORKMEN, ARCHITECT AND OTHERS FROM HAZARD DURING THE DEMOLITION OPERATIONS.

D. PERFORM THE DEMOLITION WORK IN SUCH A MANNER AS TO PREVENT FIRES. REMOVE ALL DEBRIS PROMPTLY TO A REUSE CONTAINER. NO MATERIALS SHALL BE BURIED AT THE SITE.

E. PROVIDE FIRE EXTINGUISHERS AND SMOKE DETECTION EQUIPMENT IN SERVICEABLE CONDITION, PROPER LOCATION, AND IDENTIFIED SO THAT IT WILL BE AVAILABLE FOR IMMEDIATE USE.

F. PROTECT AND MAINTAIN EXISTING UTILITY LINES WHICH ARE TO REMAIN IN SERVICE IN SUCH A MANNER AS TO AVOID INTERRUPTION OF THE SERVICE. CAP ALL UTILITIES TERMINATED BY THE DEMOLITION WORK IN A MANNER APPROVED BY THE GOVERNMENTAL AUTHORITIES AND UTILITY COMPANIES HAVING JURISDICTION.

G. VERIFY ALL DIMENSIONS IN FIELD.

H. REMOVE NON-LOAD BEARING PARTITIONS AS DASHED ON PLANS.

I. ALL EQUIPMENT CURRENTLY IN THE PREMISES IS THE PROPERTY OF THE OWNER. ANY EQUIPMENT, FIXTURES, FURNITURE, ETC. IDENTIFIED TO BE DEMOLISHED OR REMOVED AS PART OF THE DEMOLITION AND BUILD-OUT MUST BE DONE IN SUCH A MANNER AS NOT TO DAMAGE, DESTROY OR REDUCE HOPEFULNESS OF SUCH EQUIPMENT AND FIXTURES.

J. ALL DEMOLISHED OR REMOVED EQUIPMENT TO BE PLACED IN AN AREA DESIGNATED BY THE TENANT.

K. AT DEMOLITION STAGE ELECTRICAL CONTRACTOR WILL BE RESPONSIBLE FOR IDENTIFYING, TAGGING AND LOCKING OUT ALL AFFECTED CIRCUITS PRIOR TO DEMOLITION WORK BEGINS. CONTRACTOR WILL ALSO BE REQUIRED TO REMOVE ALL UNUSED CONDUITS AND CONDUCTORS, AND PROPERLY SUPPORT ALL EXISTING CONDUITS AND CONDUCTORS THAT WILL REMAIN PRIOR TO START THE NEW WORK.

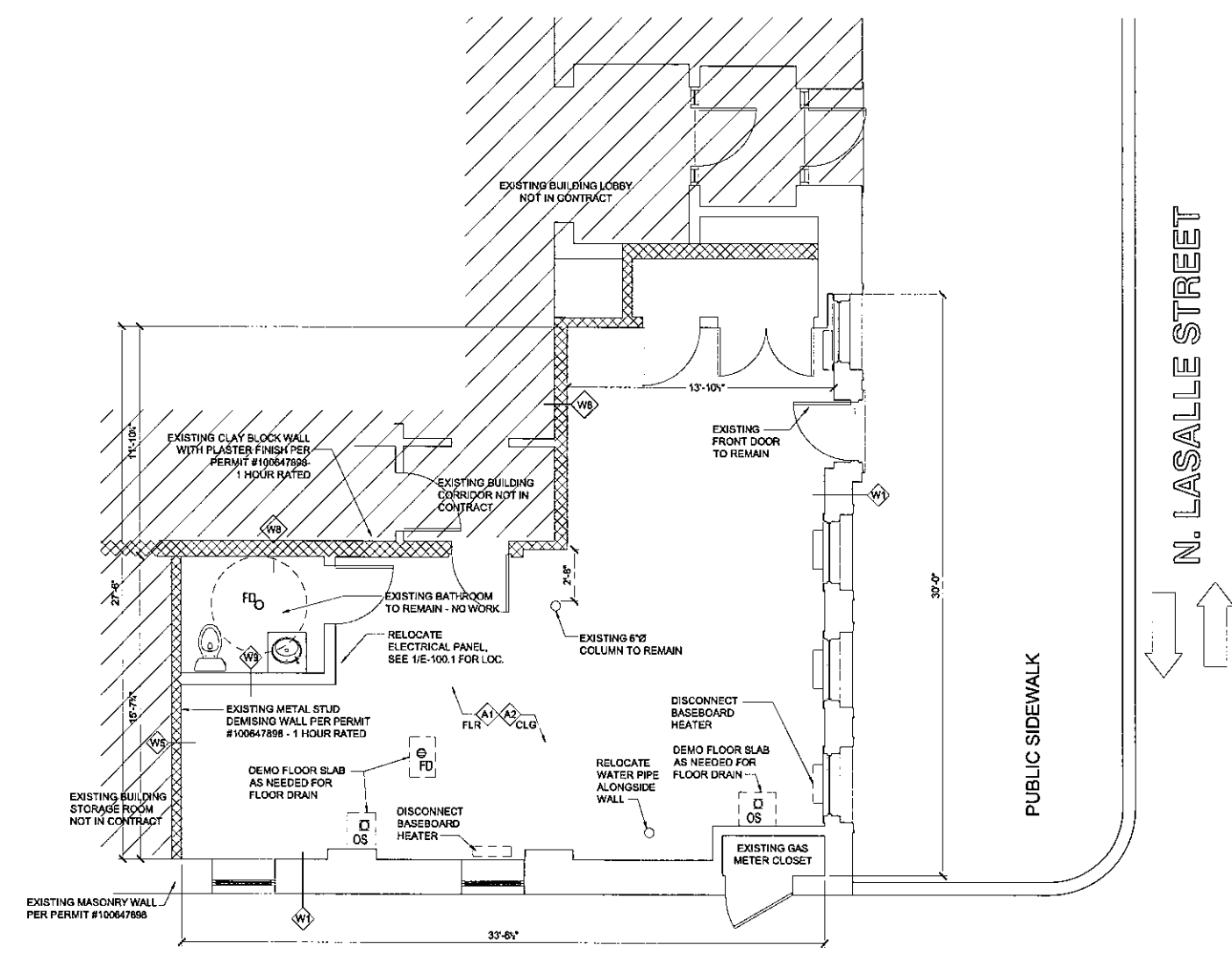
L. AT DEMOLITION STAGE PLUMBING CONTRACTOR WILL BE RESPONSIBLE FOR CAP-OFF ALL PIPING OF WATER, AFFECTED PRIOR TO DEMOLITION WORK BEGINS. CONTRACTOR WILL ALSO BE REQUIRED TO REMOVE ALL UNUSED PIPING AND FIXTURES.

M. ALL DEMOLISHED OR REMOVED EQUIPMENT, MATERIALS AND DEBRIS TO BE PLACED IN AN AREA AS TO NOT OBSTRUCT ACCESS TO THE PATH OF EGRESS, EGRESS DOORS AND/OR THE PUBLIC WAY.

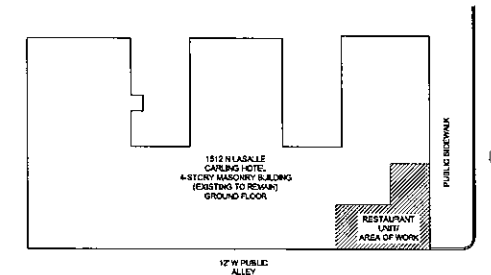
N. ALL CONTRACTORS, SUB-CRONTACTORS AND SUPPLIERS MUST HAUL AWAY ALL GARBAGE, DEBRIS AND SCRAPS RESULTING FROM THEIR WORK AT THE SITE. ALL GARBAGE, DEBRIS AND SCRAPS MUST BE SWEEPED UP AT THE END OF EACH DAY AND HAULED AWAY. ABSOLUTELY NO GARBAGE, DEBRIS OR SCRAPS CAN BE LEFT FOR THE CITY GARBAGE COLLECTION SERVICES. ANY GARBAGE, DEBRIS OR SCRAPS LEFT BY CONTRACTORS, SUBCONTRACTORS, OR SUPPLIERS WILL BE HAULED AWAY AT THEIR EXPENSE.

O. PERFORM THE DEMOLITION WORK IN SUCH A MANNER AS TO PREVENT DAMAGE AND/OR REMOVAL OF THE FIRE SEPARATION BETWEEN THE ADJACENT TENANTS HORIZONTALLY AND VERTICALLY. PATCH AND REPAIR ALL FIREPROOFING, IF ANY, DAMAGED OR REMOVED BY TENANT CONSTRUCTION.

P. LIFE SAFETY SYSTEMS SHALL REMAIN ACTIVE DURING DEMOLITION.



1 EXISTING FIRST FLOOR PLAN
SCALE: 1/4" = 1'-0"
Graphic Scale (IN FEET)
1/4 inch = 1 foot



KEY PLAN
SCALE: NTS

WALL TYPES	
W1	EXISTING MASONRY WALL - 4 HR RATED
W3	UNRATED INTERIOR WALL- 3-5/8" METAL STUD - INSULATED
W5	DEMISING WALL-GA FILE WP 1072 1 HOUR RATED
W8	INTERIOR NON-LOAD BEARING WALL-3-5/8" METAL STUD - INSULATED- 2 HOUR
W9	DEMISING WALL/PLUMBING WALL-U423- 1 HOUR RATED
W10	CORRIDOR WALL-EXIST CLAY TILE UNITS W PLASTER AND GWB - 1 HOUR
A1	EXISTING CONCRETE FLOOR- NON-COMBUSTIBLE
A2	EXISTING GYP WALL BOARD CEILING- UL L514 - 1 HOUR RATED

NOTE: 1. SEE SHEET A-300.1 FOR ALL WALL & CEILING SECTIONS.
2. SEE SHEET A-200.1 FOR ROOM FINISH AND DOOR SCHEDULES.
3. CONTRACTOR MUST VERIFY ALL EXISTING INTERIOR AND EXTERIOR WALL DIMENSIONS AND TYPES.

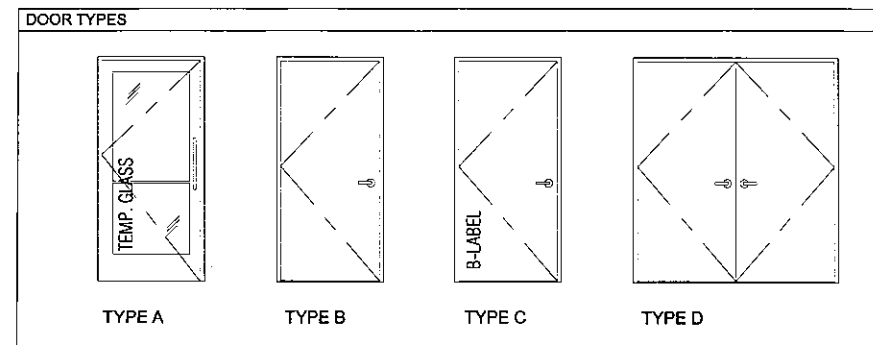
LEGEND	
106	DOOR NUMBER TAG
W1	WALL/ FLOOR TYPE TAG
1	WINDOW TYPE TAG
NEW WALLS	NEW WALLS

ROOM FINISH SCHEDULE										
ROOM #	ROOM NAME	FLOOR	FINISH	BASE	WALL MATERIAL	WALL FINISH	CEILING	CEILING FINISH	CEILING HEIGHT	REMARKS
101	PREP KITCHEN	TILE	SEALED	TILE	GREENBOARD DRYWALL	FRP	GYP DRYWALL	PAINT	8'-10"	6"x6" QUARRY FLOOR TILE
102	KITCHEN	TILE	SEALED	TILE	GREENBOARD DRYWALL	FRP	GYP DRYWALL	PAINT	8'-10" / 7'-7"	6"x6" QUARRY FLOOR TILE
103	ORDER	CERAMIC TILE	SEALED	CERAMIC TILE	GYP DRYWALL	PAINT	GYP DRYWALL	PAINT	7'-7"	12"x12" NON SLIP FLOOR TILE
104	DINING	CERAMIC TILE	SEALED	CERAMIC TILE	GYP DRYWALL	PAINT	GYP DRYWALL	PAINT	7'-7"	12"x12" NON SLIP FLOOR TILE
105	HALLWAY	CERAMIC TILE	SEALED	CERAMIC TILE	GYP DRYWALL	PAINT	GYP DRYWALL	PAINT	7'-7"	12"x12" NON SLIP FLOOR TILE
106	RESTROOM	CERAMIC TILE	SEALED	CERAMIC TILE	GYP DRYWALL	PAINT	GYP DRYWALL	PAINT	7'-9 1/2"	EXIST TILE FLOOR TO REMAIN
107	WATER SERVICE CLOSET	CERAMIC TILE	SEALED	-	GYP DRYWALL	PAINT	GYP DRYWALL	PAINT	8'-6"	
108	HWH CLOSET	CONCRETE	SEALED	-	GYP DRYWALL	PAINT	GYP DRYWALL	PAINT	8'-10"	

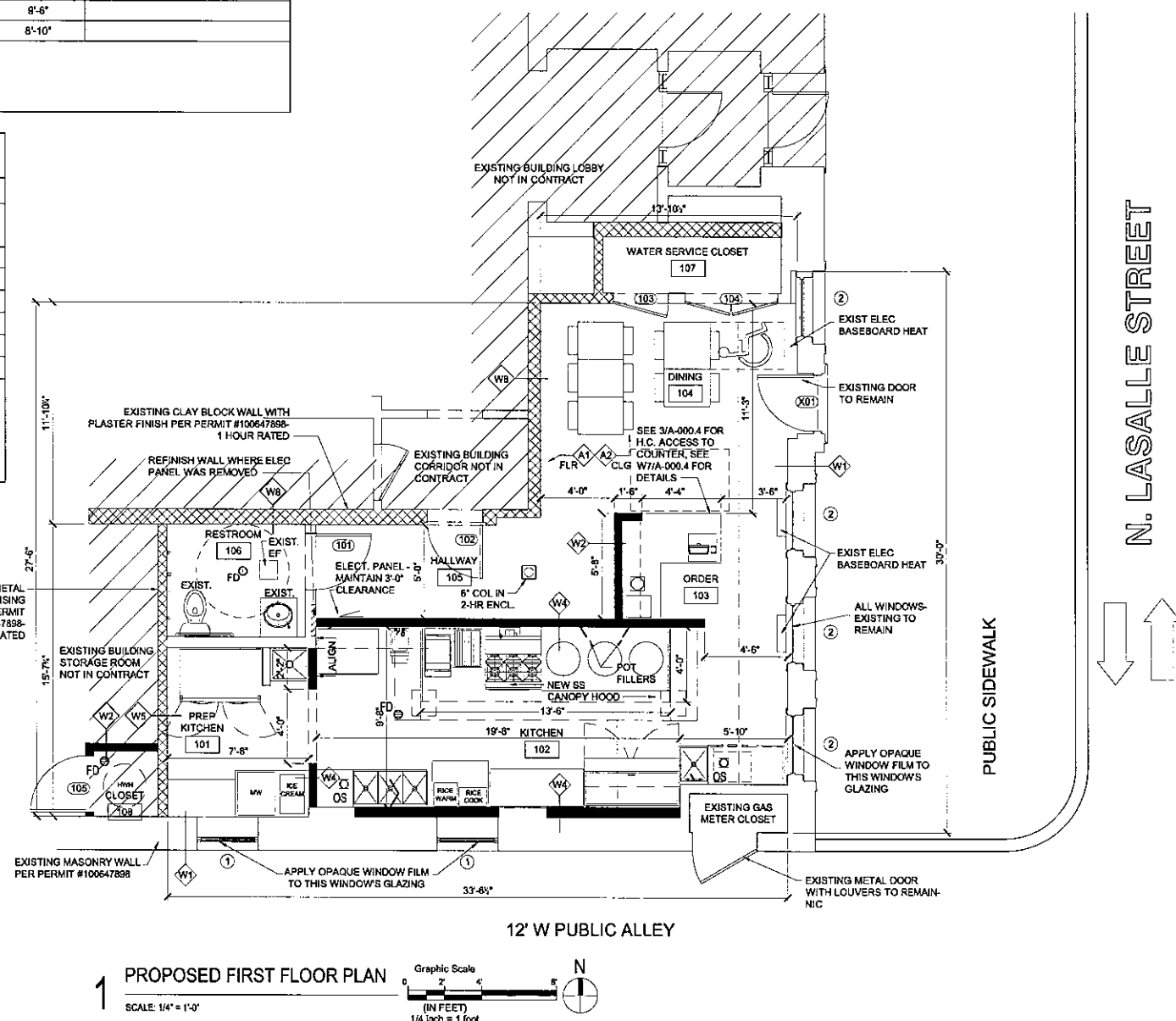
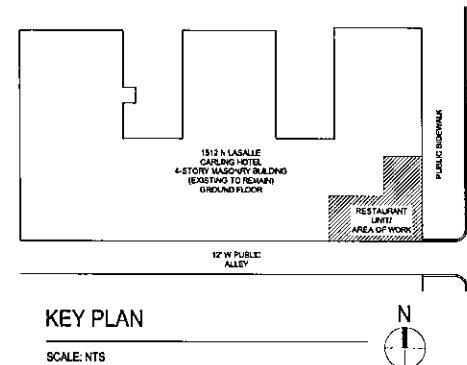
NOTE: PROVIDE CONTINUOUS WATERPROOFING MEMBRANE BELOW ALL TILED FLOORS, IF RECOMMENDED BY LATICRETE, AND 12" UP ADJACENT WALLS.
 NOTE: ALL INTERIOR WALL AND CEILING FINISHES TO BE CLASS A, FLAME SPREAD RATING OF 0 TO 25, SMOKE DEVELOPED INDEX 0-450 OR LESS, AS PER IBC 803.1.1 AND 803.1.1.
 NOTE: MATERIALS/ FINISHES SHOWN IN THIS SCHEDULE ARE GENERAL. OWNER TO SELECT FINAL FINISHES.

DOOR SCHEDULE										
DOOR #	DOOR TYPE	DOOR SIZE	DESCRIPTION	DOOR MATERIAL	JAMB MATERIAL	HARDWARE				
						CLOSER	# HINGES	LATCH	LOCK	FINISH
X01	A	3'-0" x 6'-8"	ALUMINUM WITH GLASS STOREFRONT DOOR	METAL	METAL	YES	6	LEVER	KEYED DEADBOLT	ST. STEEL
101	B	3'-0" x 6'-8"	HOLLOW METAL DOOR	METAL	METAL	YES	3	LEVER	KEYED DEADBOLT	ST. STEEL
102	C	3'-0" x 6'-8"	METAL B-LABEL DOOR	METAL	METAL	YES	3	LEVER	KEYED DEADBOLT	ST. STEEL
103	B	3'-0" x 6'-8"	HOLLOW METAL DOOR	METAL	METAL	YES	3	LEVER	KEYED DEADBOLT	ST. STEEL
104	D	(2) 3'-0" x 6'-8"	PAIR OF HOLLOW METAL DOORS	METAL	METAL	YES	3	LEVER	KEYED DEADBOLT	ST. STEEL
105	B	3'-0" x 6'-8"	HOLLOW METAL DOOR	METAL	METAL	YES	3	LEVER	KEYED DEADBOLT	ST. STEEL

notes:
 *1: on electric stand-off device wired to smoke detector.
 -verify that all existing egress doors are operable and keyless from the side of egress at all times the building is occupied.
 -verify all existing door hardware in field.
 -door handles, pulls, latches, locks and other operating devices shall be at a max. height of 48" a.f.f. the operating devices shall be capable of operation with one hand and shall not require tight grasping, tight pinching or twisting of the wrist to operate. (f.c. 1008.8.1, 1008.10.2. Illinois accessibility code 1997 edition)
 -contractor to verify dimensions in the field, all existing doorway widths requiring doors.
 -all exterior doors to have weatherstripping and thresholds.



WINDOW SCHEDULE					
WINDO WTYPE	QTY	DOOR SIZE	DESCRIPTION	FRAME MATERIAL	JAMB MATERIAL
1	2	3'-8" X 5'-0"	EXISTING WINDOWS TO REMAIN	METAL	METAL
2	4	3'-6" x 6'-0"	EXISTING WINDOWS WITH ARCH TO REMAIN	METAL	METAL



WALL TYPES	
W1	EXISTING MASONRY WALL - 4 HR RATED
W2	UNRATED INTERIOR WALL - 3-5/8" METAL STUD - UNINSULATED
W3	UNRATED INTERIOR WALL - 3-5/8" METAL STUD - INSULATED
W4	UNRATED INTERIOR WALL - 3 1/2" METAL STUD - AT KITCHEN/STORAGE; 1/2" DUROCK TO 12" AFF, GREEN BOARD TO 48" AFF, GYPSUM WALL BOARD ABOVE THAT
W5	DEMISING WALL-GA FILE WP 1072 1 HOUR RATED
W6	2 HOUR RATED INTERIOR WALL - 3-5/8" METAL STUD - UNINSULATED
W7	PARTIAL HEIGHT DIE WALL AT BARS/KITCHENS/ORDER COUNTERS
W8	INTERIOR NON-LOAD BEARING WALL - 3-5/8" METAL STUD - INSULATED - 2 HOUR
W9	DEMISING WALL/PLUMBING WALL-U423- 1 HOUR RATED
W10	CORRIDOR WALL-EXIST CLAY TILE UNITS W PLASTER AND GWB - 1 HOUR
A1	EXISTING CONCRETE FLOOR- NON-COMBUSTIBLE
A2	EXISTING GYP WALL BOARD CEILING- UL L514 - 1 HOUR RATED
C1	2-HR ENCLOSURE AT STEEL COL. - UL # X526

NOTE: 1. SEE SHEET A-300.1 FOR ALL WALL & CEILING SECTIONS.
 2. SEE SHEET A-200.1 FOR ROOM FINISH AND DOOR SCHEDULES.
 3. CONTRACTOR MUST VERIFY ALL EXISTING INTERIOR AND EXTERIOR WALL DIMENSIONS AND TYPES.

LEGEND	
(106)	DOOR NUMBER TAG
(W1)	WALL/ FLOOR TYPE TAG
(1)	WINDOW TYPE TAG
(Solid black)	NEW WALLS
(Hatched)	EXISTING 1 HR RATED DEMISING WALLS

DOB STAMP

NO.	REVISIONS/SUBMISSIONS	DATE
	FOR ZONING	-/-/-
	FOR PERMIT	-/-/-

DRAWN BY: _____ CHECKED BY: J.U.

SEAL

ENGINEER

LOCATION:
GARLIC AND CHILI
 1512 N. LASALLE DR
 CHICAGO, IL 60610

DRAWING TITLE:
PROPOSED FLOOR PLANS

PROJECT:
17-C-50

MTG 1/18/18

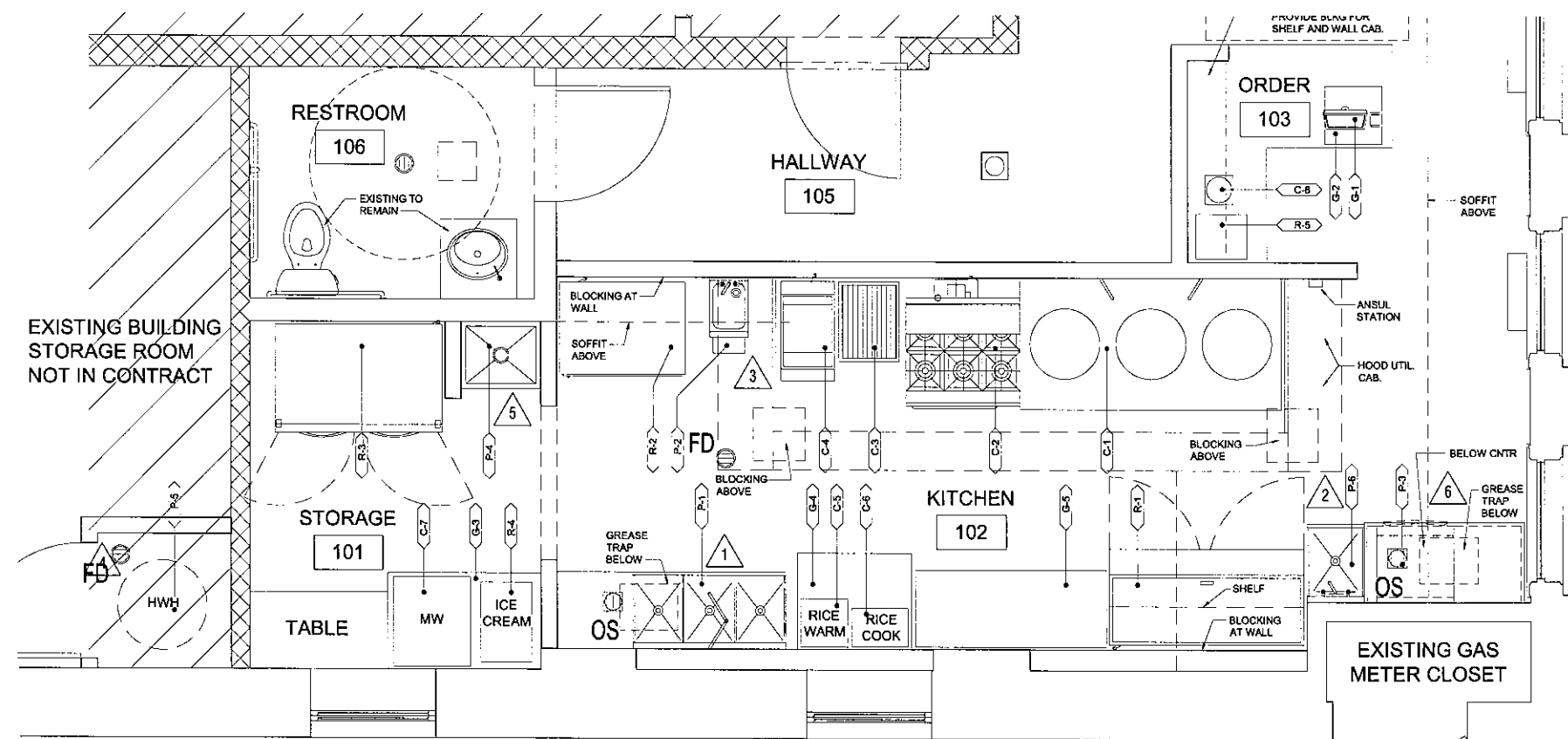
A-200.1

SHEET

CBD ARCHITECTS
 Chicago Building Design, P.C.
 770 N LaSalle St, Suite 801, Chicago, Illinois 60654
 2041 St. Thomas Street, New Orleans, LA 70115
 p: 312.492.9007 f: 312.492.9044 e: info@cbdarchitects.com

PROJECT EQUIPMENT SCHEDULE																						
MARK	DESCRIPTION	QTY	MECHANICAL										ELECTRICAL					LOCATION/REMARKS				
			WATER				DRAINS			GAS			VOLTAGE	HZ	PHASE	AMPS	HP		CONN TYPE	HT		
			HOT WATER	HEIGHT	COLD WATER	HEIGHT	INDIRECT	DIRECT	HEIGHT	GAS/NPT	M.B.T.U.	WATER COOL									HEIGHT AFF	
REFRIGERATED EQUIPMENT																						
R-1	NORPOLE NP2R-SWB0	1	--	--	--	--	--	--	--	--	--	--	--	115	60	1	7.8	1/3	--	--	KITCHEN	
R-2	TRUE GCM-33-HCLD	1	--	--	--	--	--	--	--	--	--	--	--	115	60	1	6.5	1/2	5-15P	--	KITCHEN	
R-3	TRUE STM2R-28-1C REACH IN COOLER	1	--	--	--	--	--	--	--	--	--	--	--	115	60	1	6.9	1/2	--	--	KITCHEN	
R-4	TAYLOR 104 ICE CREAM MAKER	1	--	--	--	--	--	--	--	--	--	--	--	208	60	1	14	--	--	--	KITCHEN	
R-5	SUNPENTOWN IM-101 PORTABLE ICEMAKER	1	--	--	--	--	--	--	--	--	--	--	--	115	60	1	2.9	--	--	--	SEE SPEC. 20 AMP CIRCUIT NEEDED	
PLUMBING EQUIPMENT																						
P-1	ADVANCE TABCO 3 COMP SINK	1	1/2"	--	3/2"	--	1 1/2"	--	--	--	--	--	--	--	--	--	--	--	--	--	--	KITCHEN
P-2	PERLICK TS12HSN HAND SINK WITH TOWELS	1	1/2"	--	3/2"	--	1 1/2"	--	1 1/2"	--	--	--	--	--	--	--	--	--	--	--	--	KITCHEN
P-3	NOBLE UL30 DISHWASHER	1	3/4"	--	3/4"	--	1 1/2"	--	--	--	--	--	--	115	60	1	13.2	1	--	--	UNDER COUNTER TYPE, KITCHEN	
P-4	EAGLE F1918 MOP SINK	1	3/2"	--	3/2"	--	1 1/2"	2"	--	--	--	--	--	--	--	--	--	--	--	--	--	KITCHEN STORAGE
P-5	HWE AO SMITH 75 GAL. ELECTRIC	1	--	--	1 1/4"	--	1 1/4"	--	--	--	--	--	--	--	--	--	--	--	--	--	--	KITCHEN
P-6	ADVANCE TABCO 1 COMP SINK 4-1-18	1	1/2"	--	3/2"	--	1 1/2"	--	--	--	--	--	--	--	--	--	--	--	--	--	--	KITCHEN
COOKING EQUIPMENT																						
C-1	AMERICAN RANGE ARGR-3 WOK	1	--	--	3/4"	--	--	--	--	1 1/2"	330,000	--	--	--	--	--	--	--	--	--	--	KITCHEN, 2 FAUCETS, GPM 1.8
C-2	TURBOAIR TAR-6 GAS RANGE	1	--	--	--	--	--	--	--	3/4"	227,000	--	--	--	--	--	--	--	--	--	--	KITCHEN
C-3	GRIDDLE VOLLRATH CAYENNE 40729	1	--	--	--	--	--	--	--	3/4"	28,000	--	--	--	--	--	--	--	--	--	--	KITCHEN
C-4	PITCO SIR LAWRENCE 40C GAS FRYER	2	--	--	--	--	--	--	--	3/4"	105,000	--	--	--	--	--	--	--	--	--	--	KITCHEN
C-5	RICE WARMER	1	--	--	--	--	--	--	--	--	--	--	--	120	--	--	77 W	--	--	--	--	
C-6	RICE COOKER	1	--	--	--	--	--	--	--	--	--	--	--	120	60	1	1550 W	--	--	--	--	
C-7	SHARP MICROWAVE R-6512S	1	--	--	--	--	--	--	--	--	--	--	--	120	60	--	1200 W	--	--	--	--	
C-8	COFFEE MAKER	1	--	--	--	--	--	--	--	--	--	--	--	--	--	--	--	--	--	--	--	
GENERAL EQUIPMENT																						
G-1	POS SYSTEM	1	--	--	--	--	--	--	--	--	--	--	--	120	1	15	--	--	--	--	--	ORDER
G-2	CASH BOX	1	--	--	--	--	--	--	--	--	--	--	--	--	--	--	--	--	--	--	--	ORDER
G-3	EAGLE ST. STEEL 30 X 36 SS WORK TABLE	1	--	--	--	--	--	--	--	--	--	--	--	--	--	--	--	--	--	--	--	KITCHEN
G-4	EAGLE ST. STEEL 30 X 48 SS WORK TABLE	1	--	--	--	--	--	--	--	--	--	--	--	--	--	--	--	--	--	--	--	
G-5	EAGLE ST. STEEL 24 X 60 SS WORK TABLE WITH SHELF	1	--	--	--	--	--	--	--	--	--	--	--	--	--	--	--	--	--	--	--	

NOTE: SEE PLUMBING DRAWINGS FOR PLUMBING FIXTURE DETAILS



1 EQUIPMENT PLAN
SCALE: 1/2" = 1'-0"
Graphic Scale
(IN FEET)
1/2 inch = 1 foot

DOB STAMP

NO	REVISIONS/SUBMISSIONS	DATE
	FOR ZONING	---
	FOR PERMIT	---

DRAWN BY: --- CHECKED BY: JJ

SEAL

ENGINEER

LOCATION:
GARLIC AND CHILI
1512 N. LASALLE DR
CHICAGO, IL 60610

Chicago Building Design, P.C.
770 N. LaSalle St. Suite 801, Chicago, Illinois 60654
2241 St. Thomas Street, New Orleans, LA 70115
p. 312.492.9207 f. 312.492.9244 e. info@cbdarchitects.com

DRAWING TITLE:
EQUIPMENT PLAN AND SCHEDULE

CBD ARCHITECTS

PROJECT:
17-C-50

MTG 1/18/18

A-201.1

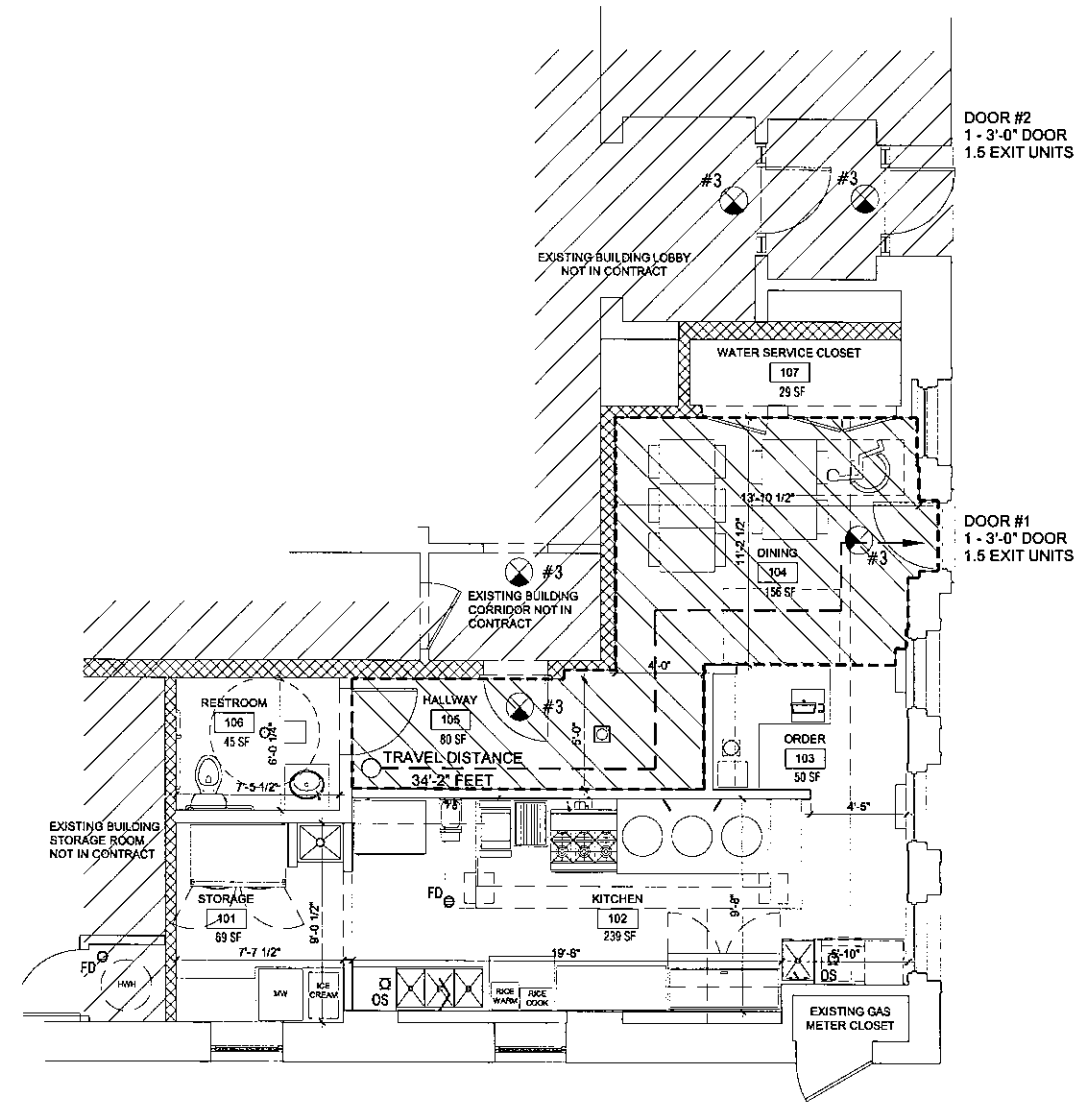
SHEET

FIRST FLOOR OCCUPANCY INFORMATION		
OCCUPANCY TYPE: F (MERCANTILE)		
CONSTRUCTION TYPE: III-B, SPRINKLER		
90 PEOPLE PER HORIZONTAL EXIT UNIT		
60 PEOPLE PER VERTICAL EXIT UNIT		
DINING 104 + HALLWAY 105 = 239 S.F. @ 15 S.F. PER OCCUPANT =	15 PEOPLE	
CALCULATED CAPACITY		
ADA CALCULATION:		
ADA (5%)	152 OCCUPANTS x 0.05 =	0 ADA SEATS
NET AREA OF LEASED SPACE 4983 SQ. FT.		
EXIT #1		
(1) 3'-0" DOOR	1.5 EXIT UNITS	
EXIT #2		
(1) 3'-0" DOOR	1.5 EXIT UNITS	
TOTAL = 3.0 EXIT UNITS		
EXIT-1 (0 E.L. - 221) 36/22 = 1.5 EXIT UNIT		
1.5 (90 PEOPLE)	135 PEOPLE	
EXIT-2 (0 E.L. - 221) 36/22 = 1.5 EXIT UNIT		
1.5 (90 PEOPLE)	135 PEOPLE	
TOTAL EXIT CAPACITY 270 PEOPLE > 15		
EXIT CAPACITIES PROVIDED ARE IN COMPLIANCE		
MERCANTILE MAX. TRAVEL DISTANCE 100 FT.		
ACTUAL MAX. TRAVEL DISTANCE 34'-2" FT.		
NOTES:		
* ALL EXIT DOORS TO BE EITHER 90 MIN. B-LABEL OR 4 HR. A-LABEL		
* FIRE-RATED DOORS WITH PANDA HARDWARE TO OPEN @ 15 PSF. PUSH FORCE, TYPICAL AND SELF-CLOSING DEVICES.		
* ALL EXIT DOORS TO SWING IN THE DIRECTION OF EXIT TRAVEL.		

EMERGENCY PLAN GENERAL NOTES:	
1.	ALL PROPOSED EXIT AND EMERGENCY LIGHTS WILL BE WIRED ON A SEPARATE CIRCUIT AND WILL BE LOCATED ON THE PANEL.
2.	FINAL LOCATIONS OF ALL EXIT AND EMERGENCY LIGHTS TO BE APPROVED BY FIRE DEPARTMENT.
3.	ALL ELECTRICAL WORK TO COMPLY WITH BOTH THE N.E.C. AND LOCAL MUNICIPAL CODES.
4.	ALL EXIT DOORS MUST BE KEYLESS IN THE DIRECTION OF EXIT.

ACCESSIBILITY NOTES	
NOTE A.	PROVIDE MINIMUM 5% OF SEATS FOR ACCESSIBLE DINING
NOTE B.	PROVIDE SAME SERVICES AT ACCESSIBLE TABLES AS ARE PROVIDED AT BAR COUNTER.
NOTE C.	ALL CONTROLS AND OPERATING MECHANISMS TO BE WITHIN REACH RANGE PER ICC/ANSI A117.1-2003 CHAPTER 3.308 AND 3.309, (R-15' TO 48" H).
NOTE D.	SEE ICC/ANSI A117.1-2003 CHAPTER 7.303 FOR ALL SIGNAGE REQUIREMENTS. SEE ICC/ANSI A117.1-2003 CHAPTER 7.303.1.1 FOR LOCATION OF PERMANENT ROOM AND SPACE REQUIREMENTS.
NOTE E.	PROVIDE PROPER MANEUVERING CLEARANCES AT DOORS PER ICC/ANSI A117.1-2003 CHAPTER 4.404.2.3
NOTE F.	ALL NEW OR ALTERED DOORS TO HAVE LEVER HARDWARE
NOTE G.	DOORS IN PUBLIC AND COMMON AREAS LEADING INTO ACCESSIBLE ROOMS AND SPACES TO BE 3'-0" WIDE MINIMUM
NOTE H.	ALL DOORS MUST HAVE 32" CLEAR DOOR OPENING MEASURED FROM THE FACE OF THE DOOR WHEN IT IS 90 DEGREES TO THE DOOR STOP.
NOTE I.	ALL DOORS LEADING INTO HAZARDOUS ROOMS OR SPACES TO HAVE KNOBLED HARDWARE.
NOTE J.	ALL PUBLIC AND COMMON AREA INTERIOR DOORS TO HAVE A 5 LB. MAX FORCE TO OPEN.
NOTE K.	ALL PUBLIC AND COMMON AREA EXTERIOR DOORS TO HAVE A 8.5 LB. MAX FORCE TO OPEN.

EXIT-DIRECTIONAL SIGN SCHEDULE			
SINGLE FACE			
FIRE ESCAPE	STAR	EXIT	
#1	#2	#3	
#4	#5	#6	
#7	#8	#9	
#10	#11	#12	
DOUBLE FACE			
FIRE ESCAPE	STAR	EXIT	
#13	#17	#18	
#19	#20	#21	
#22	#23	#24	
MANUFACTURER AND CAT. NO.	LAMPS NO. & TYPE	VOLTAGE	REMARKS
SURE-LITES #100 SERIES	(2) 20W T-8'S	120	SURFACE OR PENDANT MOUNTED WITH BATTERY UNIT, CHICAGO APPROVED VERIFY PENDANT LENGTH.
SURE-LITES #100 SERIES	(2) 12W T-8'S	120	SURFACE OR PENDANT MOUNTED WITH BATTERY UNIT, CHICAGO APPROVED VERIFY PENDANT LENGTH.



1 FIRST FLOOR OCCUPANCY PLAN
 SCALE: 1/4" = 1'-0"
 Graphic Scale
 (IN FEET)
 1/4 inch = 1 foot

DOB STAMP		
NO.	REVISIONS/SUBMISSIONS	DATE
	FOR ZONING	---
	FOR PERMIT	---
DRAWN BY: --		CHECKED BY: JJ

SEAL

ENGINEER

LOCATION:

GARLIC AND CHILI
 1512 N. LASALLE DR
 CHICAGO, IL 60610

Chicago Building Design, P.C.
 770 N. LaSalle St., Suite 801, Chicago, Illinois 60654
 3241 S. Thomas Street, New Orleans, LA 70115
 P: 312.492.9007 F: 312.492.9044 E: info@cbdarchitects.com

DRAWING TITLE:

OCCUPANCY/EXIT PLANS AND CALCULATIONS

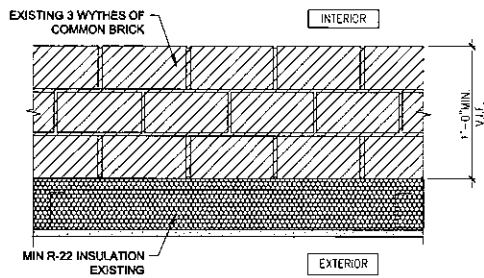
CBD ARCHITECTS

PROJECT: **17-C-50**

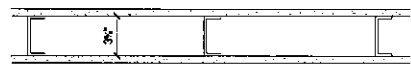
MTG 1/18/18

A-202.1

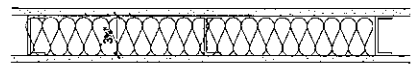
N. LASALLE STREET



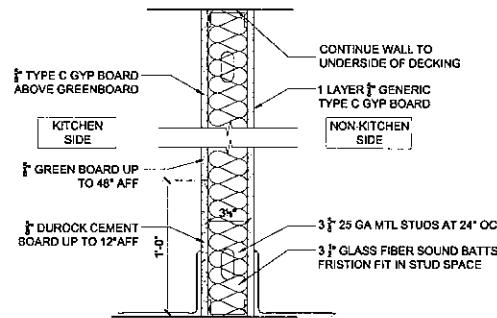
W1 EXISTING MASONRY WALL- 4 HR MIN (FOR REFERENCE ONLY)
SCALE: 1 1/2" = 1'-0"
W-12-M-1 10 HRS
PER PERMIT #100647898



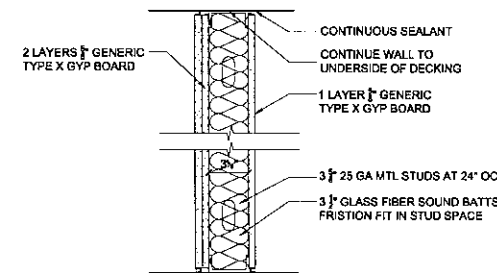
W2 WALL SECTION- UNRATED-3 5/8" METAL STUD- UNINSULATED
HORIZONTAL SECTION-SCALE: 1 1/2" = 1'-0"



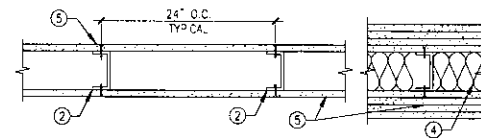
W3 WALL SECTION- UNRATED-3 5/8" METAL STUD- INSULATED
HORIZONTAL SECTION-SCALE: 1 1/2" = 1'-0"



W4 WALL SECTION- UNRATED-3 5/8" METAL STUD- UNINSULATED
HORIZONTAL SECTION-SCALE: 1 1/2" = 1'-0"



W5 EXISTING DEMISING WALL- 1 HOUR RATED (FOR REFERENCE ONLY)
HORIZONTAL SECTION-SCALE: 1 1/2" = 1'-0"
GA FILE WP 1072-1 HR
PER PERMIT #100647898

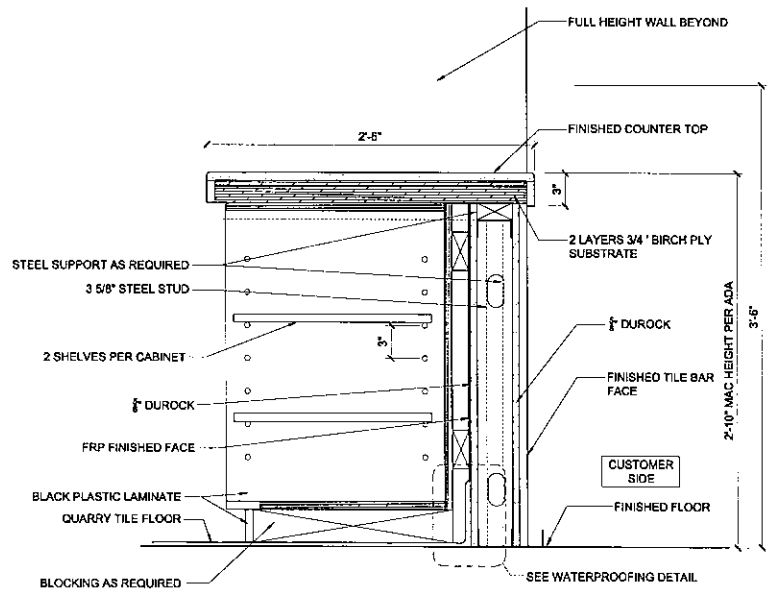


W6 WALL SECTION- 1, 2, 3, 4HR. (AS NEEDED)
SCALE: 1 1/2" = 1'-0"
U.L. #U419

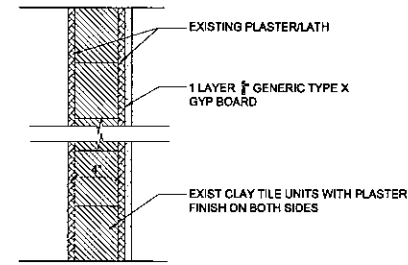
U419 (WALL) NON-BEARING WALL
1. FLOOR AND CEILING RUNNERS (NOT SHOWN) - FOR USE WITH ITEM 2 - CHANNEL SHAPED, FABRICATED FROM MIN 23 MSG CORROSION-PROTECTED STEEL, MIN DEPTH TO ACCOMMODATE STUD SIZE, WITH MIN 1-1/4" LONG LEGS, ATTACHED TO FLOOR AND CEILING WITH FASTENERS 24" O.C. MAX.
2. STEEL STUDS - CHANNEL SHAPED, FABRICATED FROM NO. 25 MSG CORROSION-PROTECTED OR GALV STEEL, MIN DEPTH AS INDICATED UNDER ITEM 5, SPACED A MAX OF 24" O.C. STUDS TO BE CUT 3/4" LESS THAN ASSEMBLY HEIGHT.
2A. FRAMING MEMBERS - STEEL STUDS - IN LIEU OF ITEM 2 - PROPRIETARY CHANNEL SHAPED STUDS, MIN DEPTH AS INDICATED UNDER ITEM 5, FABRICATED FROM MIN 0.015" (MIN BARE METAL THICKNESS) GALV STEEL, SPACED A MAX OF 24" O.C. STUDS TO BE CUT 3/4" LESS THAN ASSEMBLY HEIGHT. ALLOWABLE USE OF STUDS IS SHOWN IN THE TABLE BELOW. FOR DIRECT ATTACHMENT OF GYPSUM BOARD ONLY.
3. WOOD STRUCTURAL PANEL SHEATHING - (OPTIONAL, FOR USE WITH ITEM 5 ONLY) (NOT SHOWN) - 4 FOOT WIDE, 7/16" THICK ORIENTED STRAND BOARD (OSB) OR 1/2" THICK STRUCTURAL SHEATHING (PLYWOOD) COMPLYING WITH DOC P51 OR P52, OR APA STANDARD PRP-108, MANUFACTURED WITH EXTERIOR GLUE, APPLIED HORIZONTALLY OR VERTICALLY TO THE STEEL STUDS. VERTICAL JOINTS CENTERED ON STUDS, AND STAGGERED ONE STUD SPACE FROM WALLBOARD JOINTS. ATTACHED TO STUDS WITH FLAT-HEAD SELF-DRILLING TAPPING SCREWS WITH A MIN HEAD DIAMETER OF 0.292" AGT MAX 6" O.C. IN THE PERIMETER AND 12" O.C. IN THE FIELD. WHEN USED, FASTENER LENGTHS FOR GYPSUM PANELS INCREASED BY MIN 1/2".
4. BATTS & SLANNETS - (REQUIRED AS INDICATED UNDER ITEM 5) MINERAL WOOL BATTS, FRICTION FITTED BETWEEN STUDS AND RUNNERS. MIN NOM THICKNESS AS INDICATED UNDER ITEM 5.
5. GYPSUM BOARD - GYPSUM PANELS WITH BEVELED, SQUARE OR TAPERED EDGES, APPLIED VERTICALLY OR HORIZONTALLY. VERTICAL JOINTS CENTERED OVER STUDS AND STAGGERED ONE STUD CAVITY ON OPPOSITE SIDES OF STUDS. VERTICAL JOINTS IN ADJACENT LAYERS (MULTI LAYER SYSTEMS) STAGGERED ONE STUD CAVITY. HORIZONTAL JOINTS NEED NOT BE BACKED BY STEEL FRAMING. HORIZONTAL EDGE JOINTS AND HORIZONTAL BUTT JOINTS ON OPPOSITE SIDES OF STUDS NEED NOT BE STAGGERED. HORIZONTAL EDGE JOINTS AND HORIZONTAL BUTT JOINTS IN ADJACENT LAYERS (MULTI LAYER SYSTEMS) STAGGERED A MIN OF 12". THE THICKNESS AND NUMBER OF LAYERS FOR THE 1-HR, 2 HR, 3 HR AND 4 HR RATINGS ARE AS FOLLOWS:

RATING HR.	MIN STUD DEPTH, IN. ITEM 2	MIN STUD DEPTH, IN. ITEM 2A	# OF LAYERS & THICKS OF PANEL	MIN THICKS OF INSL. (ITEM 4)
1	3-1/2	3-5/8	1 LAYER, 5/8"	OPTIONAL
1	2-1/2	3-5/8	1 LAYER, 1/2"	1-1/2"
2	1-5/8	3-5/8	1 LAYER, 3/4"	OPTIONAL
2	1-5/8	2-1/2	2 LAYER, 1/2"	OPTIONAL
2	1-5/8	2-1/2	2 LAYER, 5/8"	OPTIONAL
2	3-1/2	3-5/8	1 LAYER, 3/4"	3"
3	1-5/8	2-1/2	3 LAYER, 1/2"	OPTIONAL
3	1-5/8	2-1/2	2 LAYER, 3/4"	OPTIONAL
3	1-5/8	2-1/2	3 LAYER, 5/8"	OPTIONAL
4	1-5/8	2-1/2	4 LAYER, 5/8"	OPTIONAL
4	1-5/8	2-1/2	4 LAYER, 1/2"	OPTIONAL
4	2-1/2	2-1/2	2 LAYER, 3/4"	2"

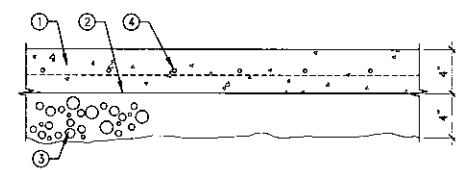
6. FASTENERS - (NOT SHOWN) - FOR USE WITH ITEM 2. TYPE S OR S-12 STEEL SCREWS USED TO ATTACH PANELS TO STUDS (ITEM 2) OR FURRING CHANNELS (ITEM 7).
SINGLE LAYER SYSTEMS: 1" LONG FOR 1/2" AND 5/8" THICK PANELS OR 1-1/4" LONG FOR 3/4" PANELS, SPACED 8" O.C. WHEN PANELS ARE APPLIED HORIZONTALLY, OR 6" O.C. ALONG VERTICAL AND BOTTOM EDGES AND 12" O.C. IN THE FIELD WHEN PANELS ARE APPLIED VERTICALLY.
TWO LAYER SYSTEMS: FIRST LAYER - 1" LONG FOR 1/2" AND 5/8" THICK PANELS, OR 1-1/4" LONG FOR 3/4" THICK PANELS, SPACED 16" O.C. SECOND LAYER - 1-5/8" LONG FOR 1/2" AND 5/8" THICK PANELS, 2-1/4" LONG FOR 3/4" THICK PANELS, SPACED 16" O.C. WITH SCREWS OFFSET 6" FROM FIRST LAYER.
THREE LAYER SYSTEMS: FIRST LAYER - 1" LONG FOR 1/2" AND 5/8" THICK PANELS, SPACED 24" O.C. SECOND LAYER - 1-5/8" LONG FOR 1/2" AND 5/8" THICK PANELS, SPACED 24" O.C. THIRD LAYER - 2-1/4" LONG FOR 1/2" THICK PANELS OR 2-5/8" LONG FOR 5/8" THICK PANELS, SPACED 12" O.C. SCREWS OFFSET A MIN 6" FROM LAYER BELOW.
FOUR LAYER SYSTEMS: FIRST LAYER - 1" LONG FOR 1/2" AND 5/8" THICK PANELS, SPACED 24" O.C. SECOND LAYER - 1-5/8" LONG FOR 1/2" AND 5/8" THICK PANELS, SPACED 24" O.C. THIRD LAYER - 2-1/4" LONG FOR 1/2" THICK PANELS OR 2-5/8" LONG FOR 5/8" THICK PANELS, SPACED 24" O.C. FOURTH LAYER - 2-5/8" LONG FOR 1/2" THICK PANELS OR 3" LONG FOR 5/8" THICK PANELS, SPACED 12" O.C. SCREWS OFFSET A MIN 6" FROM LAYER BELOW.
7. FURRING CHANNELS - (OPTIONAL, NOT SHOWN, FOR SINGLE AND DOUBLE LAYER SYSTEMS) - RESILIENT FURRING CHANNELS FABRICATED FROM MIN 23 MSG CORROSION-PROTECTED STEEL, SPACED VERTICALLY A MAX OF 24" O.C. FLANGE PORTION ATTACHED TO EACH INTERSECTING STUD WITH A 1/2" LONG TYPE S-12 STEEL SCREW.
8. JOINT TAPE AND COMPOUND - VINYL OR CASEIN, DRY OR PREMIXED JOINT COMPOUND, APPLIED IN TWO COATS TO JOINTS AND SCREW HEADS OF OUTER LAYERS. PAPER TAPE, NOM 2" WIDE, EMBEDDED IN FIRST LAYER OF COMPOUND OVER ALL JOINTS OF OUTER LAYER PANELS. PAPER TAPE AND JOINT COMPOUND MAY BE OMITTED WHEN GYPSUM PANELS ARE SUPPLIED WITH A SQUARE EDGE.
9. SIDING BRICK OR STUCCO - (OPTIONAL, NOT SHOWN) OR ALUMINUM, VINYL, OR STEEL SIDING, BRICK VENEER OR STUCCO, MEETING THE REQUIREMENTS OF LOCAL CODE AGENCIES, INSTALLED OVER GYPSUM PANELS. BRICK VENEER ATTACHED TO STUDS WITH CORRUGATED METAL WALL TIES ATTACHED TO EACH STUD WITH STEEL SCREWS, NOT MORE THAN EACH SIXTH COURSE OF BRICK.
10. CAULKING AND SEALANTS - (OPTIONAL, NOT SHOWN) - A BEAD OF ACOUSTICAL SEALANT APPLIED AROUND THE PARTITION PERIMETER FOR SOUND CONTROL.



W7 SECTION-ORDER COUNTER WALL
SCALE: 1 1/2" = 1'-0"

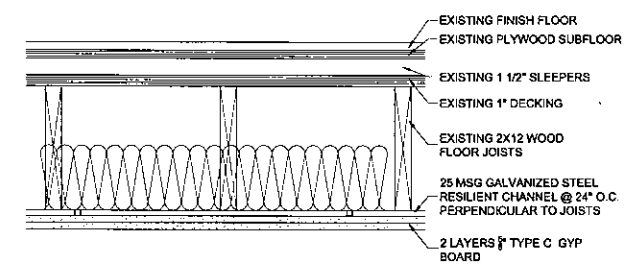


W8 EXISTING CORRIDOR WALL- 1 HOUR (FOR REFERENCE ONLY)
SCALE: 1 1/2" = 1'-0"
W-5-M-77-CORE + 1 LAYER GYP BD= 1HR
PER PERMIT #100647898

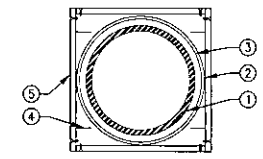


A1 EXISTING FLOOR- NON COMBUSTIBLE - V.I.F.
VERTICAL SECTION-SCALE: 1 1/2" = 1'-0"
NO U.L.#

- 4" POUR IN PLACE CONCRETE SLAB
- VAPOR BARRIER
- 4" COMPACTED GRAVEL
- 6x6x1.4 WEAVED WIRE FABRIC



A2 CEILING CONSTRUCTION- 1 HOUR RATED
VERTICAL SECTION-SCALE: 1 1/2" = 1'-0"
U.L.#-L514
USE W/ FIRETOP FS3



C1 COLUMN SECTION- 2HR.
SCALE: 1 1/2" = 1'-0"
U.L.#X615

U.L.#X615 (COLUMN) 1 1/2HR. RATING
1. STEEL COLUMN: STEEL PIPE COLUMNS WITH A MINIMUM INSIDE DIAM. OF 4 IN. A MIN WALL THICKNESS OF 0.237 IN. AND A MIN WEIGHT OF 10.79 LBS PER FT.
2. MASTIC COATING - ALBIMFG TYPE B88 INTUMESCENT MASTIC COATING IN MULTIPLE 1/8 COATS TO FINAL THICKNESS OF .85 IN THICK.
3. 1 IN. HEXAGONAL #20 STEEL WIRE GALVANIZED REINFORCING MESH PRIOR TO APPLICATION OF FINAL TWO COATS.
4. (OPTIONAL) WALL BOARD ATTACHMENT STUDS: 1-5/8 IN. DEEP WITH NOM. 1-3/4 IN. LEGS, AND 1/4 IN. STIFFENING FLANGES FABRICATED FROM NO. 26 MSG(MIN) GALV STEEL. CHANNELS CUT 1/2 TO 1/4 IN. LESS IN LENGTH THAN COLUMN HEIGHT.
5. (OPTIONAL) GYPSUM BOARD: 1/2 IN. THICK, APPLIED VERTICALLY, ATTACHED TO STEEL STUDS AND CHANNELS WITH 1 IN. LONG STEEL SCREWS SPACED 12 IN. OC.

DOB STAMP

NO.	REVISIONS/SUBMISSIONS	DATE
	FOR LONING	---
	FOR PERMIT	---

DRAWN BY: _____ CHECKED BY: JJJ

SEAL

ENGINEER

LOCATION:
GARLIC AND CHILI
1512 N. LASALLE DR
CHICAGO, IL 60610

Chicago Building Design, P.C.
770N LaSalle St, Suite 801, Chicago, Illinois 60654
3241 St. Thomas Street, New Orleans, LA 70115
P: 312.492.3007 F: 312.492.9044 E: info@cbdarchitects.com

DRAWING TITLE:
WALL / CEILING SECTIONS AND DETAILS

CBD ARCHITECTS

PROJECT:
17-C-50

MTG 1/18/18

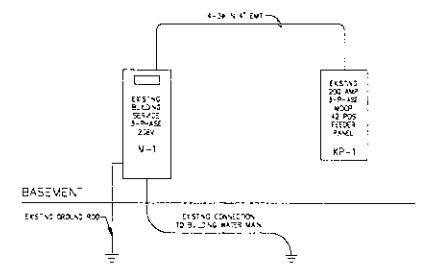
A-301.1

SHEET

DOB STAMP

NO.	REVISION/SUBMISSIONS	DATE
	FOR ZONING	1-1-18
	FOR PERMIT	1-1-18

DRAWN BY: _____ CHECKED BY: JJ



2 POWER RISER DIAGRAM
SCALE: N.T.S.

ELECTRICAL CODE INFORMATION

1. ALL LOW-VOLTAGE WIRING SHALL BE SUPPORTED FROM BUILDING STRUCTURE AND FROM CEILING GRID, TILES, OR SUPPORT WIRE/CABLES. ALL SUCH WORK SHALL BE NEATLY CABLED/BUNDLED TOGETHER.
2. FIRE SEAL ALL PENETRATIONS AFTER REMOVAL AND/OR INSTALLATION OF CONDUIT, DEVICES, BOXES, PENE-THRU'S, ETC., WITH APPROVED FIRE-STOP COMPOUND.
3. ALL LOW-VOLTAGE WIRING SHALL BE PLENUM RATED OR INSTALLED IN CONDUIT, INCLUDING SPEAKER WIRING.
4. PRIOR TO INSTALLATION OF LOW-VOLTAGE WIRING IN ABOVE CEILING AREAS, ALL EXISTING LOW-VOLTAGE WIRING (PHONE, DATA, CABLES) MUST BE COMPLETELY REMOVED.
5. EMERGENCY LIGHTING CIRCUIT JUNCTION BOXES SHALL BE SO MARKED AND IDENTIFIED WITH CIRCUIT NUMBERS AND PANEL IDENTIFICATION.
6. ALL 120V OUTLETS WITHIN 8'-0" OF ANY SWA SHALL BE GFI PROTECTED.
7. ISO-GROUND OUTLETS SHALL COMPLY WITH ALL APPLICABLE PROVISIONS OF THE NATIONAL ELECTRICAL CODE (LATEST APPLICABLE CODE YEAR) AND ALL LOCAL ORDINANCES AND AMENDMENTS, ESPECIALLY ARTICLE 250-74, EXCEPTION 4.
8. AT LEAST ONE RECEPTACLE OUTLET SHALL BE INSTALLED DIRECTLY ABOVE A SHOW WINDOW FOR EACH 12 LINEAR FEET OR FRACTION THEREOF PER NEC ART. 210-61.

EMERGENCY PLAN GENERAL NOTES:

1. ALL PROPOSED EXIT AND EMERGENCY LIGHTS WILL BE WIRED ON A SEPARATE CIRCUIT AND WILL BE LOCKED ON IN THE PANEL.
2. FINAL LOCATIONS OF ALL EXIT AND EMERGENCY LIGHTS TO BE APPROVED BY FIRE DEPARTMENT.
3. ALL ELECTRICAL WORK TO COMPLY WITH BOTH THE N.E.C. AND LOCAL MUNICIPAL CODES.
4. ALL EXIT DOORS MUST BE KEYSLESS IN THE DIRECTION OF EXIT.

ELECTRIC SYMBOLS KEY

□	NEW DUPLEX RECEPTACLE, 20A-120V-1PH-3W GROUNDING, NEMA 5-20R, RECESSED FLUSH IN WALL IN FINISHED AREAS 18" AFF.
□	SAME AS ABOVE, ABOVE COUNTER, 48" A.F.F.
□	SAME AS ABOVE, GROUND FAULT CIRCUIT INTERRUPTER
□	SAME AS ABOVE, CEILING/FLOOR OUTLET
□	SAME AS ABOVE, EXTERIOR GRADE
□	DUPLEX RECEPTACLE - DEDICATED CIRCUIT, ISOLATED GROUND
□	NEW QUADRI-PLEX RECEPTACLE, 20A-120V-1PH-3W GROUNDING, NEMA 5-20R, RECESSED FLUSH IN WALL IN FINISHED AREAS 18" AFF.
□	SAME AS ABOVE, ABOVE COUNTER
□	ISOLATED GROUND DUPLEX RECEPTACLE, ABOVE COUNTER
□	CAT 6 DATA CABLE JACK, AT POS COUNTERS PRINTERS AND TVS
□	CAT 6 DATA CABLE JACK, CEILING
□	PRINTER JACK FOR POS AND ORDER PRINTERS
□	TELEPHONE JACK
□	DISCONNECT SWITCH
□	PROVIDE POWER FOR FAN, SEE HVAC EQUIPMENT SCHEDULE ON M-2-2
□	THERMOSTAT

PANEL P-1 □ PANEL DESIGNATION

PANEL SCHEDULE KP-1

FEEDER: 120/208 VOLTS, 3 PH 4 WIRE DEVICE FAMILY: BOLT-ON M.L.O. MAIN O.C. DEVICE - SIZE: 200 AMPS
 BUS SIZE: 200 AMPS TYPE: NEMA 1 ISO GND BUS
 LOCATION: HALLWAY 105 MOUNTING: RECESSED ISO GND BUS

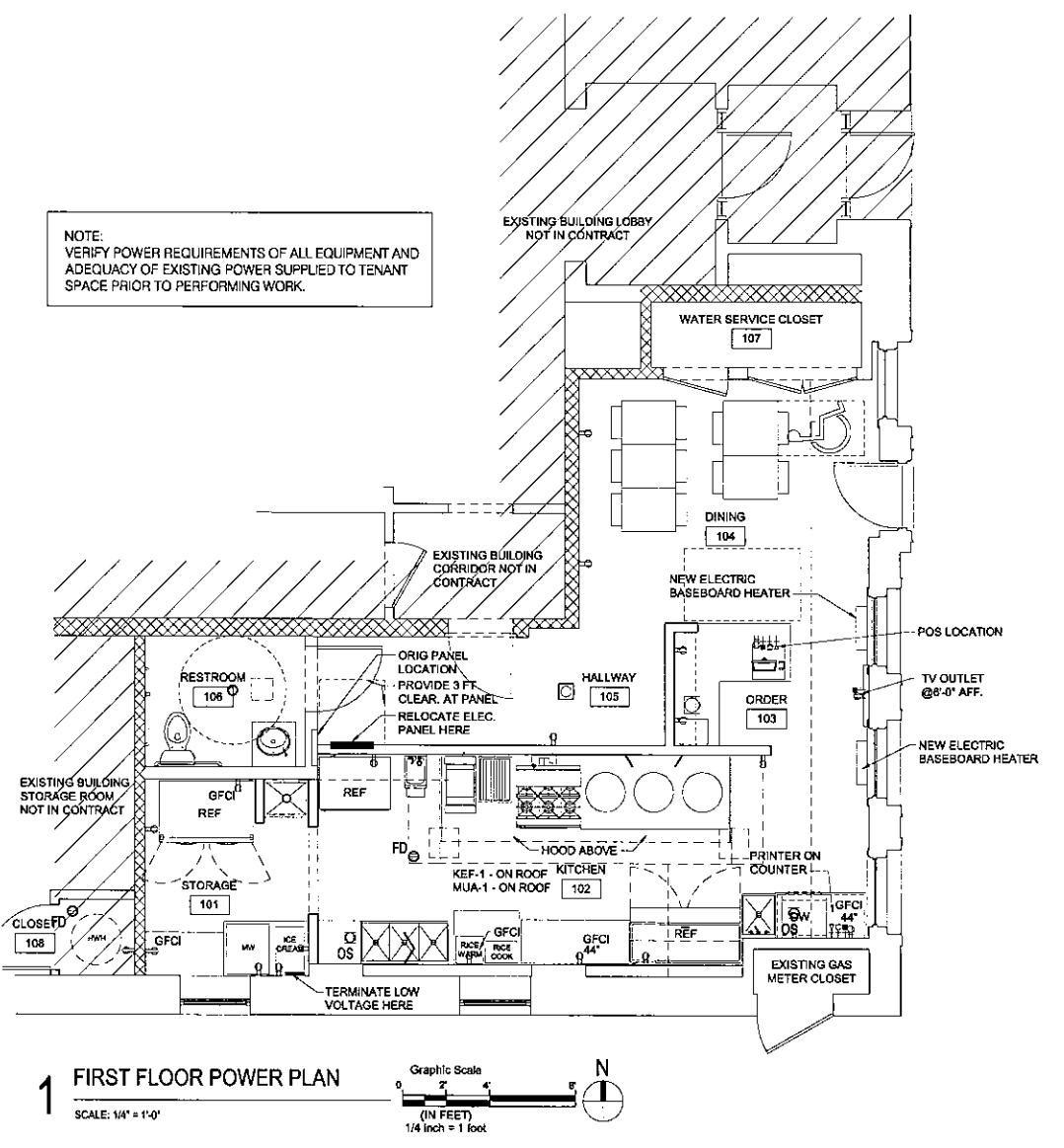
AMP	LOCATION/DESCRIPTION	CIR. NO.	LOAD	WATT	DESCRIPTION	AMP
20/1	ENTRY SIGNAGE**	1	1320	120	EXT SIGN	20/1
20/3	ERV-2	3	1370	4	BOOSTER PUMP	20/3
20/3		5	1370	5		20/3
20/3		7	1370	8		20/3
20/3	HOOD	9	3940	10	POS SYSTEM	20/1
20/3		11	4950	12	RICE COOKER	20/1
20/3		13	3350	14	COFFEE MKR/CTR OUTLET	20/1
20/3	MAU-4	15	1820	16	SAND PRISSE	20/1
20/3		17	1180	18	RICE WRMR/CTR OUTLETS	20/1
20/3		19	2830	20	HEAT/AC #2	30/2
20/1	BATH FAN	21	2300	22		30/2
30/2	HEAT/AC #1	23	4300	24	HEAT/AC #3	30/2
30/2		25	4300	26		30/2
20/1	TALL FRIDGE	27	2780	28	BATH OUTLET	20/1
20/1	COOLER	29	1035	30	LIGHTS	20/1
20/2	ICE CREAM MKR	31	2980	32	DISHWASHER	20/1
20/2		33	2240	34	GEN. OUTLETS	20/1
20/1	MICRO	35	2040	36	GEN. OUTLETS	20/1
20/1	COUNTER OUTLETS	37	1080	38	LIGHTS	20/1
20/1	LIGHTS	39	930	40	LIGHTS	20/1
20/1	LIGHTS	41	420	42	SPARE	20/1

TOTAL VA PER PHASE: 17230 | 14680 | 5270 TOTAL PANEL LOAD: 47.185 kVA, 131 AMPS

NOTES:
 - OUTLETS IN WET AREAS TO BE WATER PROOF
 - OUTDOOR OUTLETS SHALL BE EQUIPPED WITH "IN USE" COVERS
 * PROVIDE LOCKABLE BREAKER

ELECTRIC HEATER SCHEDULE

TAG	LOCATION	TYPE	MANUFACTURER	MODEL	CONFIGURATION	LENGTH	WATT/FT	BTL/PH	BTL/WR	VOLTS	PHASE	FLA	MCCP	CONTROLS	NOTES
BH-1	ORDER 103	BASEBOARD HEATER	DESIGN ARCHITECTURAL HEATING	#LBT-3	WALL MOUNT	3 FT	500	5,120	1,500	208	1	9.0	20	T-STAT	1,2
BH-2	DINING 104	BASEBOARD HEATER	DESIGN ARCHITECTURAL HEATING	#LBT-3	WALL MOUNT	3 FT	500	5,120	1,500	208	1	9.0	20	T-STAT	1,2



1 FIRST FLOOR POWER PLAN
 SCALE: 1/4" = 1'-0"
 Graphical Scale: 1/4 inch = 1 foot

SEAL

ENGINEER

LOCATION:
GARLIC AND CHILI
 1512 N. LASALLE DR
 CHICAGO, IL 60610

DRAWING TITLE:
POWER PLAN AND PANEL SCHEDULES

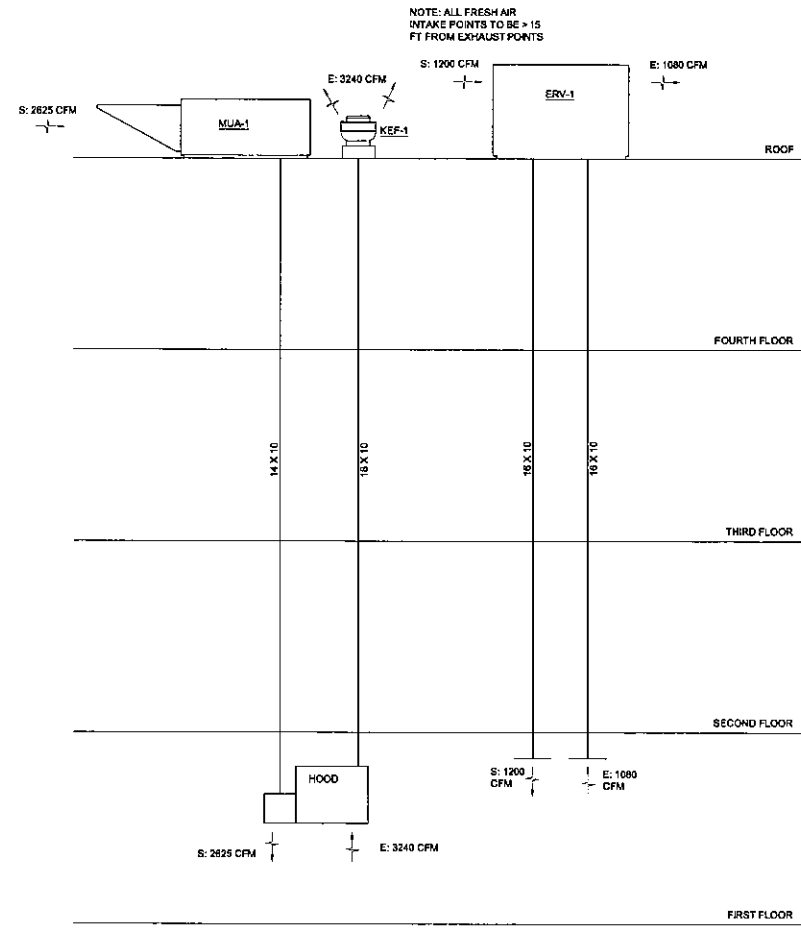
CBD ARCHITECTS

Chicago Building Design, P.C.
 770 N. LaSalle St., Suite 801, Chicago, Illinois 60654
 3241 St. Thomas Street, New Orleans, LA 70115
 P: 312.462.9047 F: 312.462.9048 E: info@cbdarchitects.com

PROJECT:
17-C-50

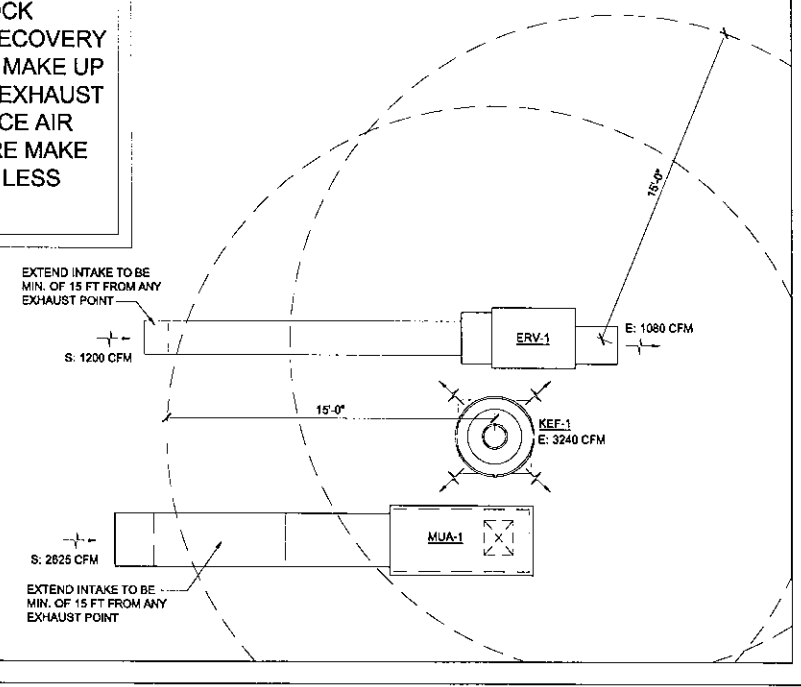
MTG 1/18/18

E-200.1



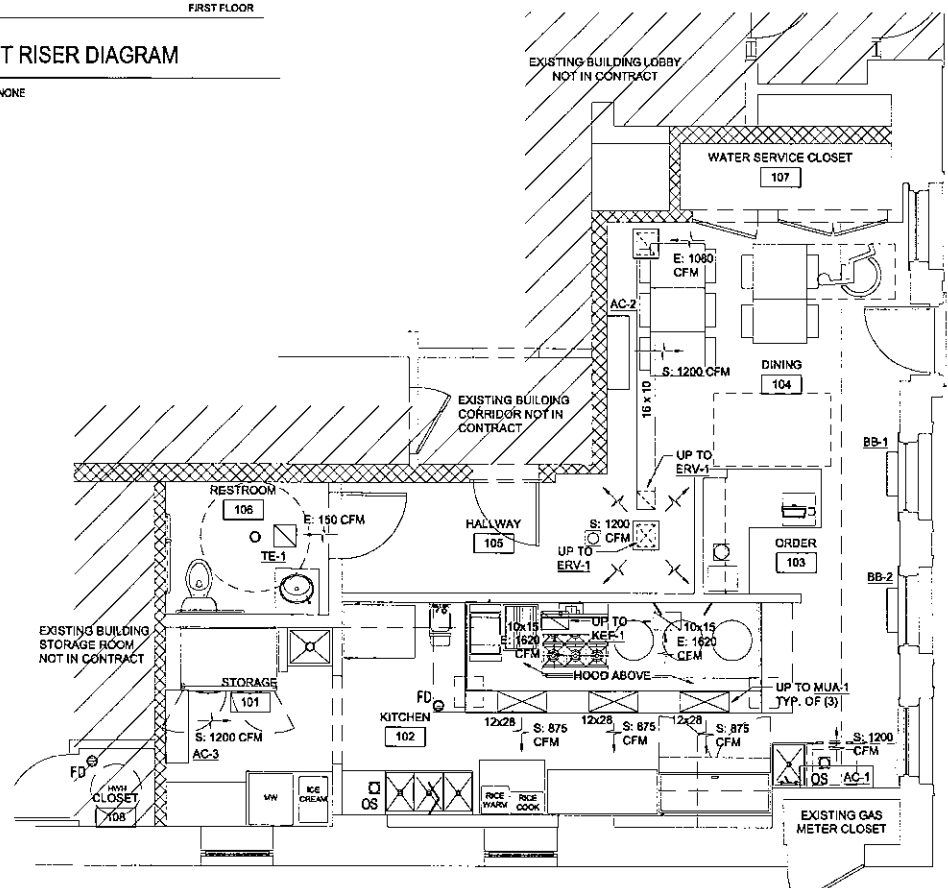
NOTE: ALL FRESH AIR INTAKE POINTS TO BE > 15 FT FROM EXHAUST POINTS

NOTE:
CONTRACTOR TO INTERLOCK OPERATION OF ENERGY RECOVERY VENTILATOR (ERV-1) WITH MAKE UP AIR (MUA-1) AND KITCHEN EXHAUST (KEF-1). PRESSURE BALANCE AIR FLOW SYSTEMS TO ENSURE MAKE UP AIR IS APPROX. 50 CFM LESS THAN EXHAUST AIR.



2 ROOF PLAN
SCALE: 1/8" = 1'-0"
Graphic Scale (IN FEET) 1/8 inch = 1 foot

3 DUCT RISER DIAGRAM
SCALE: NONE



1 FIRST FLOOR MECHANICAL PLAN
SCALE: 1/8" = 1'-0"
Graphic Scale (IN FEET) 1/8 inch = 1 foot

DOB STAMP

NO.	REVISIONS/SUBMISSIONS	DATE
	FOR ZONING	---
	FOR PERMIT	---
DRAWN BY: --		CHECKED BY: JJ

SEAL

ENGINEER

LOCATION:
GARLIC AND CHILI
1512 N. LASALLE DR
CHICAGO, IL 60610

Chicago Building Design, P.C.
770 N. LaSalle St. Suite 801, Chicago, Illinois 60654
3241 S. Thomas Street, New Orleans, LA 70115
p. 312.482.9007, f. 312.482.9044, e. info@cbdarchitects.com

DRAWING TITLE:
MECHANICAL PLANS

CBD ARCHITECTS

PROJECT: **17-C-50**

MTG 1/18/18

M-200.1

VENTILATION SCHEDULE

Table with columns: ROOM NO., ROOM NAME, ROOM USE, ROOM SQFT, HEAT LOSS AREA(A40), NATURAL LIGHT/VENTILATION (ORD, ACTUAL), MECHANICAL VENTILATION (ORD, ACTUAL), SERVED BY FAN SYSTEM (SUPPLY, EXHAUST), and REMARKS.

AIR BALANCE SCHEDULE

Table with columns: TAG, EXHAUST (CFM), TAG, FRESH AIR (CFM), and TOTAL values.

HVAC NOTES

- List of HVAC notes including equipment materials, noise levels, duct construction, and heating system requirements.

MECHANICAL ENERGY CODE COMPLIANCE

FOR DUCTS IN UNCONDITIONED SPACES, PROVIDE R-5 INSULATION. FOR DUCTS OUTSIDE THE BUILDING, PROVIDE R-4.5 INSULATION. DUCT CONSTRUCTION: FASTEN ALL JOINTS, SEAMS AND CONNECTIONS SECURELY WITH WELDS, GASKETS, MASTICS (ADHESIVES), ASTIC-PLUS, EMBEDDED FABRIC OR TAPES. DUCT TAPE IS NOT PERMITTED.

CITY OF CHICAGO BUILDING NOTES

- List of City of Chicago building notes covering sound levels, flexible duct, rigid ductwork, and refrigeration notes.

REFRIGERATION NOTES

- List of refrigeration notes regarding expansion valves, pressure relief valves, and pipe types.

EQUIPMENT SCHEDULE

Table with columns: TAG, TONS, # OF STAGES, SYSTEM TYPE, AREA SERVED, MANUFACTURER, MODEL, LOCATION, UNIT TYPE, WT (LBS), DIMENSIONS (HxWxD), SUPPLY FAN (ESP, MAX CFM, D.A.I. CFM), MOTOR (HP, RPM), HEATING (INPUT, OUTPUT, TOTAL (MBTU)), COOLING (REFRIGERANT TYPE, REFRIGERANT WEIGHT (LBS)), MCA, MOCP, PHASE, VOLTS, and NOTES.

- Notes for the equipment schedule regarding unit weight, insulation, convenience outlets, economizers, smoke detectors, and supply/return air smoke detectors.

- Notes regarding honeywell t-stat, condensate drain pipe, and communication between outside air and exhaust air.

EXHAUST FAN SCHEDULE

Table with columns: TAG, LOCATION, AREA SERVED, MANUFACTURER, MODEL, FAN TYPE, SONES, MAX CFM, DRIVE, ESP (INCHES), MOTOR (HP, RPM), MCA, MOCP, PHASE, VOLTS, CONTROLS, and NOTES.

- Notes for the exhaust fan schedule including single point wiring, exhaust termination, mesh screens, and gravity backdraft dampers.

- Notes regarding unit mounted disconnects, roof curb, grease boxes, equipment rails, and communication between outside air and exhaust air.

REFRIGERATION SCHEDULE

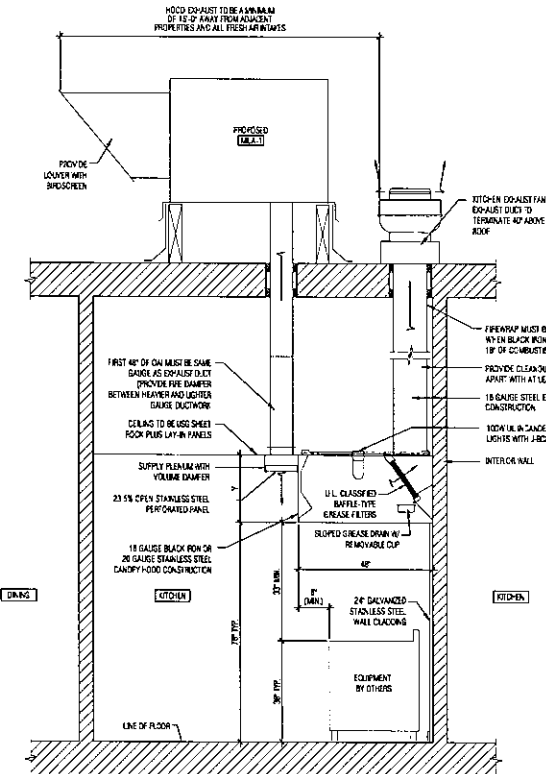
Table with columns: QTY., TAG #, UNIT #, NO. COMP., COMP.1/P, COMP.1/P, REFRIGERANT, WT. REF., REMOTE, SELF-CONTAINED, LOCATION, AIR-COOLED, WATER-COOLED, and REMARKS.

NOTE: REFRIGERATION CONTRACTOR TO VERIFY CALCULATIONS AND EQUIPMENT SIZES

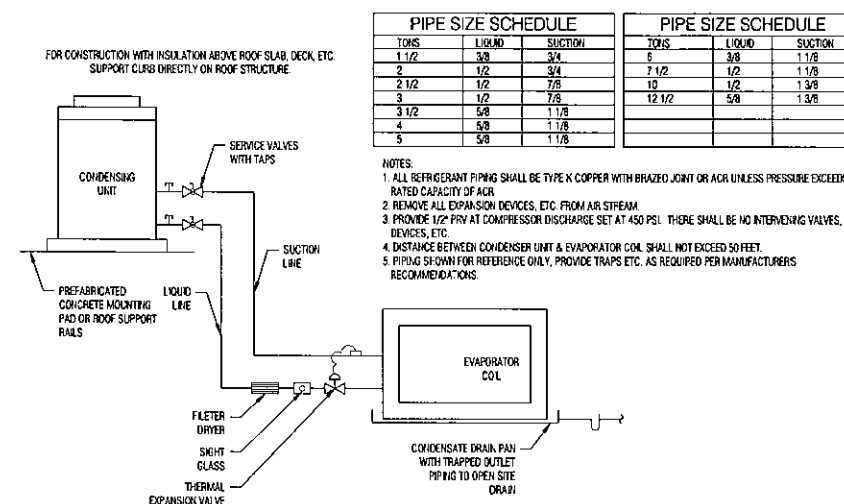
ELECTRIC HEATER SCHEDULE

Table with columns: TAG, LOCATION, TYPE, MANUFACTURER, MODEL, CONFIGURATION, HEATING ELEMENT (LENGTH, WATT/FT), HEATING CAPACITY (BTU/HR, BTU/HR), ELECTRICAL (VOLTS, PHASE, FLA, MOCP), CONTROLS, and NOTES.

- Notes regarding integral t-stat and disconnect switches.



2 TYPE I HOOD W/MAKE UP AIR DIAGRAM SCALE: N.T.S.



PIPE SIZE SCHEDULE table with columns: TONS, LIQUID, SUCTION.

PIPE SIZE SCHEDULE table with columns: TONS, LIQUID, SUCTION.

- Notes for the refrigerant piping diagram regarding pipe type, expansion devices, distance between units, and piping traps.

1 REFRIGERANT PIPING DIAGRAM SCALE: N.T.S.

DOB STAMP

Table for DOB stamp with columns: NO., REVISIONS/SUBMISSIONS, DATE, FOR ZONING, FOR PERMIT.

SEAL

ENGINEER

GARLIC AND CHILH 1512 N. LASALLE DR CHICAGO, IL 60610

Chicago Building Design, P.C. 770 N. LaSalle St., Suite 801, Chicago, Illinois 60654 3241 St. Thomas Street, New Orleans, LA, 70115 p. 312.492.9007, f. 312.492.9044, e. info@cbarchitects.com

LOCATION:

MECHANICAL SCHEDULES AND NOTES

DRAWING TITLE:

PROJECT: 17-C-50

MTG 1/18/18

M-201.1

CBD ARCHITECTS

SHEET

PLUMBING GENERAL NOTES

A. GENERAL
1. SEE MECHANICAL GENERAL CONDITIONS IN THE MECHANICAL SPECIFICATIONS

B. PLUMBING
1. PROVIDE SANITARY DRAINAGE, VENT AND WATER SUPPLY PIPING FOR A COMPLETE AND OPERATING SYSTEM...

2. SANITARY, WASTE AND VENT PIPING SHALL BE:
a. UNDERGROUND - SERVICE WEIGHT CAST IRON OR SCHEDULE 40 GALVANIZED STEEL WITH CAST IRON DRAINAGE FITTINGS AND GASKET JOINTS...

3. WATER SUPPLY PIPING SHALL BE:
a. UNDERGROUND - DUCTILE IRON WITH MATCHING FITTINGS AND GASKET JOINTS OR TYPE K COPPER WITH CAST BRONZE OR WROUGHT COPPER FITTINGS...

4. TESTING OF PIPING:
a. SANITARY, STORM, WASTE AND VENT - FILL ALL PIPING TO HIGHEST POINT IN THE SYSTEM AND LET STAND FOR DURATION AS REQUIRED BY LOCAL CODE.

5. CLEAN ALL WATER SUPPLY PIPING AND CHLORINATE IN ACCORDANCE WITH THE METHOD PRESCRIBED BY AWWA PRIOR TO TURNING SYSTEM OVER TO OWNER.

6. PIPE INSULATION - COVER ALL COLD, HOT AND RETICULATING WATER PIPING WITH 1" THICK FIBERGLASS INSULATION...

7. PLUMBING FIXTURES:

- a. WATER CLOSET (WC-1):
1) BOWL: ANSIS/ASME A112.19.2 FLOOR MOUNTED, SPHON JET, WHITE VITREOUS CHINA, 18 INCHES HIGH...

- b. WATER CLOSET (WC-2):
1) BOWL: ANSIS/ASME A112.19.2 FLOOR MOUNTED, SPHON JET, WHITE VITREOUS CHINA, 15 INCHES HIGH...

- c. URINAL (UR) AND URINAL:
1) URINAL: ANSIS/ASME A112.19.2 VITREOUS CHINA, WALL HUNG SPHON JET URINAL WITH FINISHING RIM...

- d. LAVATORY (LAV):
1) BASKIN: ANSIS/ASME A112.19.2 VITREOUS CHINA SELF-RIMMING COUNTER TOP LAVATORY, 20 x 17 INCHES WITH DRILLINGS ON 4 INCH CENTERS...

- 2) TRIM: ANSIS/ASME A112.18.1 CHROME PLATED COMBINATION SUPPLY FITTING WITH POP-UP WASTE WATER ECONOMY ABATOR...

- 3) ACCESSORIES:
a) 5 FEET OF 1/2 INCH DIAMETER PLAIN END REINFORCED RUBBER HOSE.
b) HOSE CLAMP HANGER.
c) MOP HANGER.

a. PLUMBING SPECIALTIES:
a. DRAINS:
1) FLOOR DRAINS:
a) FINISHED AREAS: ANSIS A112.21.1 LACQUERED CAST IRON TWO PIECE BODY WITH DOUBLE DRAINAGE FLANGE...

- b) UNFINISHED AREAS: ANSIS A112.21.1 LACQUERED CAST IRON TWO PIECE BODY WITH DOUBLE DRAINAGE FLANGE, FLASHING COLLAR, WEEP HOLES, REVERSIBLE CLAMPING COLLAR...

- c) GARAGE AREAS: ANSIS A112.21.2 CAST IRON TWO PIECE BODY WITH DOUBLE DRAINAGE FLANGE, FLASHING COLLAR, WEEP HOLES, SLOTTED SEDIMENT BUCKET AND HEAVY DUTY STRAINER...

- d) FLOOR SINKS: SQUARE LACQUERED CAST IRON BODY WITH INTEGRAL SEWAGE PAN, EPOXY COATED INTERIOR, ALUMINUM DOME STRAINER, CLAMP COLLAR...

- e) OPEN SITE WASTE: CAST BRONZE FLUWEL WITH ALUMINUM BOTTOM DOME STRAINER, THREADED OUTLET WITH BRASS P-TRAP...

- f) EXTERIOR AREAS: ROUND CAST IRON DOUBLE FLANGED F-LONG, WITH HEAVY DUTY SECURED SERIATED CAST IRON COVER WITH LIFTING DEVICE AND BRONZE PLUG...

- g) INTERIOR FINISHED FLOOR AREAS: LACQUERED CAST IRON TWO PIECE BODY WITH FLASHING FLANGE, REVERSIBLE CLAMPING COLLAR...

- h) INTERIOR UNFINISHED ACCESSIBLE AREAS: CHAMFERED OR THREADED TYPE PROVIDE BOLTED STACK CLEANOUTS AT BASE OF ON VERTICAL RAW WATER LEADERS AND SOIL STACKS.

- i) RECESSED VALVE BOX (LAUNDRY WASHING MACHINE): STEEL PERFORMED EPOXY COATED ROUND-IN-RIB AND COVER FLANGE WITH BRASS LONG SHANK VALVES...

- j) NON-FREEZE WALL MOUNTS:
1) WALL MOUNT: ANSIS/ASME 1019-NON-FREEZE, SELF-DRAINING TYPE WITH CHROME PLATED OR POLISHED BRONZE...

- k) GREASE TRAPS:
1) INTERIOR RECESSED TRAP: EPOXY COATED FABRICATED STEEL FOR FLUSH WITH FLOOR INSTALLATION...

- 2) THERMOSTAT CONTROL VALVES: PROVIDE ON DOMESTIC WATER HEATER AS REQUIRED BY ILLINOIS PLUMBING CODE.

- 3) VALVE ASSEMBLY: BRASS BODY, PRESSURE BALANCED, WITH INTEGRAL ORT STRAINER/CHECK VALVE, SERVICE STOPS, CALIBRATED HANDLE, AUTOMATIC SHUT OFF WITH HOT OR COLD WATER FAILURE...

- 4) APPROVAL: BY AGA AS AUTOMATIC STORAGE WATER HEATER AND FOR OPERATION UP TO 180 DEGREES F.

- 5) CONTROLS: AUTOMATIC WATER THERMOSTAT WITH TEMPERATURE RANGE ADJUSTABLE FROM 120 TO 180 DEGREES F, GAS PRESSURE REGULATOR, AUTOMATIC RESET HIGH LIMIT MULTIBURNER OR TUBULAR BURNER...

- 6) DAP-RAGM-TYPE COMPRESSOR TANKS:
1) CONSTRUCTION: WELDED STEEL, TESTED AND STAMPED IN ACCORDANCE WITH SECTION 80 OF ASME CODE...

- 2) ACCESSORIES: PRESSURE GAGE AND AIR-CHARGING FITTING, TANK DRAIN, RECHARGE TO 12 PSIG.

- 3) CASING: BRONZE, RATED FOR 125 PSIG (860 KPA) WORKING PRESSURE.

- 4) IMPELLER: BRONZE.

- 5) SHAFT: ALLOY STEEL WITH INTEGRAL THRUST COLLAR AND TWO OIL LUBRICATED BRONZE SLEEVE BEARINGS.

- 6) SEAL: CARBON ROTATING AGAINST A STATIONARY CERAMIC SEAT.

- 7) SUBMERSIBLE SLUMP PUMPS AND SEWAGE EJECTORS:
1) SLUMP PUMPS - SUBMERSIBLE:
a) TYPE: COMPLETELY SUBMERSIBLE CENTRIFUGAL, SIMPLEX OR DUPLEX AS SCHEDULED.

- b) CASING: CAST IRON OR BRONZE PUMP BODY AND OIL FILLED MOTOR (COVERED).

- c) IMPELLER: CAST IRON OR BRONZE KEYED TO STAINLESS STEEL SHAFT WITH INLET SCREEN.

- d) BEARINGS: BALL BEARINGS, FACTORY SEALED, GREASE LUBRICATED.

- e) SLUMP: CONCRETE, STEEL OR FIBERGLASS BASIN AS SCHEDULED, STEEL COVER PLATE WITH INSPECTION OPENING AND COVER AND ALARM FITTINGS.

- f) ACCESSORIES: OIL RESISTANT CORD FOR CONNECTION TO ELECTRIC WIRING SYSTEM INCLUDING GROUNDING CONNECTOR FOR SINGLE PHASE MOTORS, PROVIDE PLUG WITH THREE-PRONG CONNECTOR.

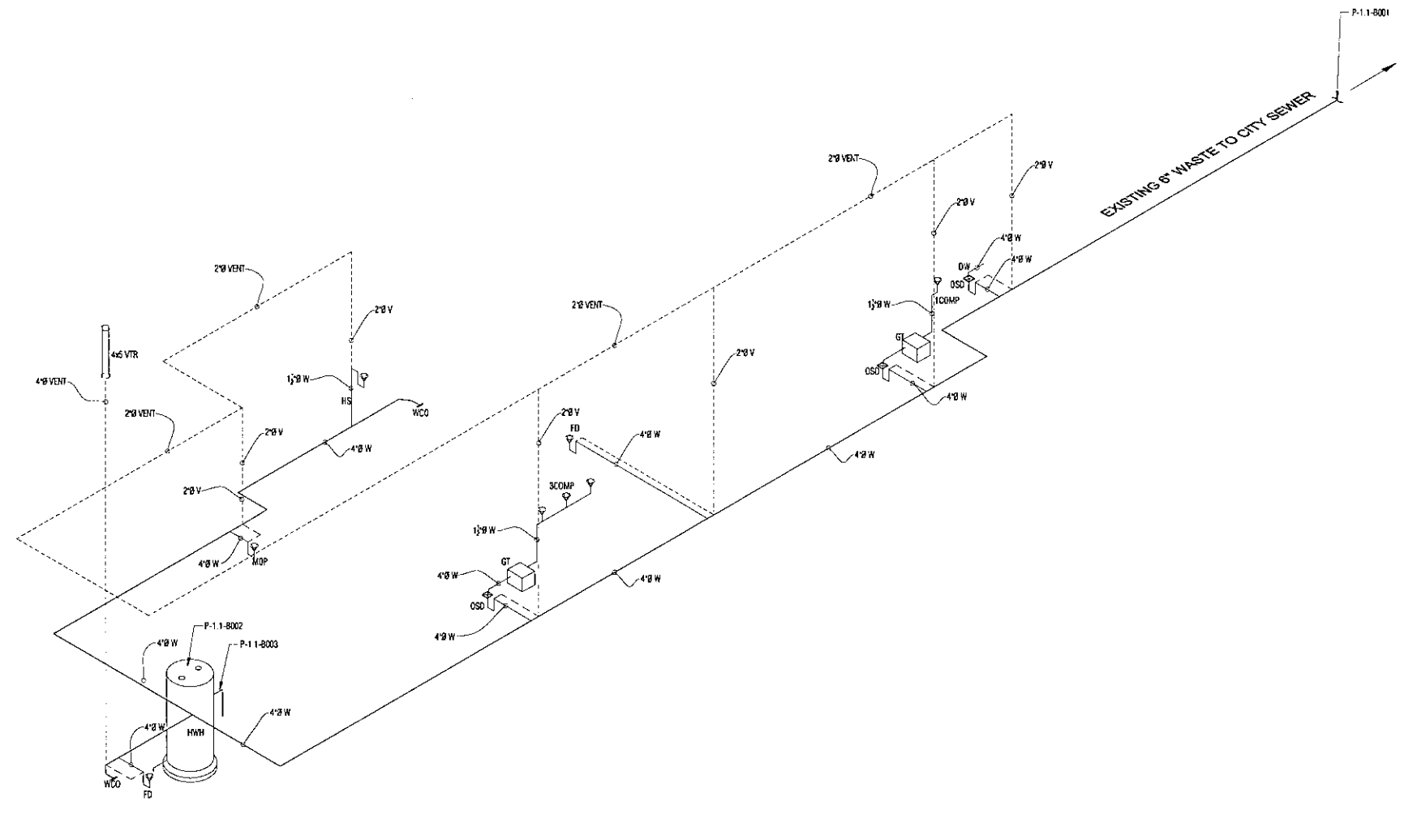
- g) CONTROLS: SIMPLEX SINGLE PHASE - MERCURY SWITCH TYPE LEVEL CONTROLS WITH SEPARATE LIQUID LEVEL CONTROL HIGH LEVEL ALARM.

PLUMBING ABBREVIATIONS

Table with 4 columns: Abbreviation, Description, Abbreviation, Description. Includes 10COMP, 20COMP, 30COMP, CH, DG, DW, FCO, GT, HS, HW, IB, ICE.

KEYNOTE LEGEND

Table with 2 columns: Keynote, Description. Includes P-1.1-8001, P-1.1-8002, P-1.1-8003.



1 FIRST FLOOR WASTE PIPE DIAGRAM
NOT TO SCALE

DOB STAMP

Table for DOB stamp with columns: NO., REVISIONS/SUBMISSIONS, DATE. Includes fields for FOR ZONING, FOR PERMIT, DRAWN BY, CHECKED BY.

SEAL

ENGINEER

GARLIC AND CHILI
1512 N. LASALLE DR
CHICAGO, IL 60610

Chicago Building Design, P.C.
770 N. LaSalle St., Suite 1600
Chicago, IL 60610
P: 312.462.9000 F: 312.462.9044 E: info@cbdarchitects.com

PLUMBING WASTE PIPE
DIAGRAM

CBD ARCHITECTS

PROJECT: 17-C-50

MTG 1/18/18

P-100.1

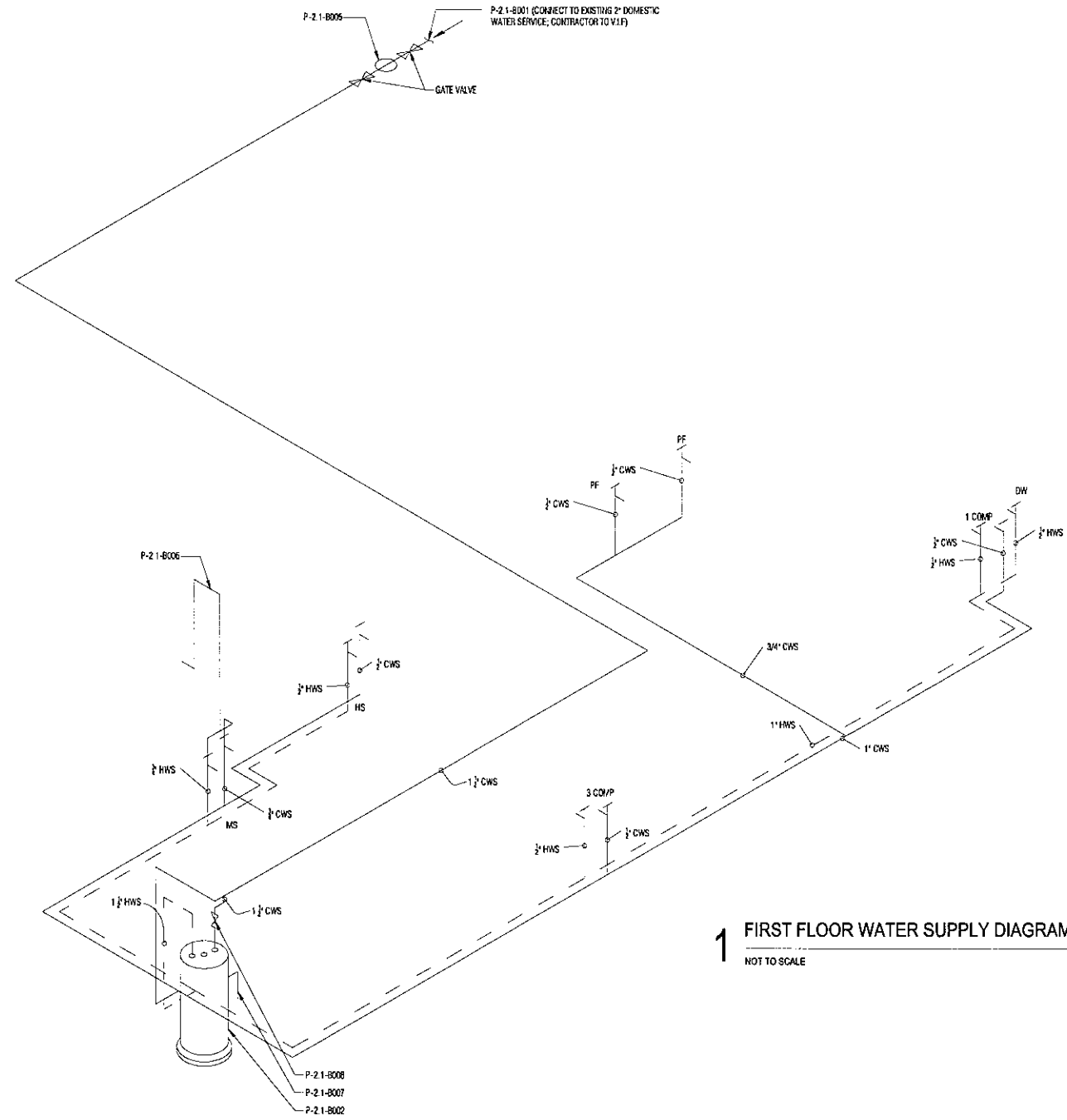
PLUMBING FIXTURE SCHEDULE													
TAG NO.	ITEM	DESCRIPTION	EXISTING QTY. / TO REPLACE	NEW QTY.	PROPOSED TOTAL	SUPPLY			DIRECT WASTE		A.R. GAP WASTE		REMARKS
						COLD WATER	HOT WATER	HGT. A.F.F.	FXDT. SIZE	HGT. A.F.F.	FXDT. SIZE	HGT. A.F.F.	
3COMP	3-COMPT SINK		—	1	1	1/2"	1/2"	36"	—	—	1-1/2"	3"	
1COMP	1-COMPT SINK		—	1	1	1/2"	1/2"	36"	—	—	1-1/2"	3"	
HS	HAND SINK		—	1	1	1/2"	1/2"	36"	1-1/2"	12"	—	—	
WHH	WATER HEATER		—	1	1	1-1/2"	1-1/2"	18"	—	—	3/4"	—	
MS	MOP SINK		—	1	1	1/2"	1/2"	36"	1-1/2"	12"	—	—	
DW	DISHWASHER		—	1	1	—	1/2"	36"	—	—	1-1/2"	—	

NOTES:
 1. ALL WATER SUPPLY PIPINGS TO FIXTURES SHALL BE 1/2", UNLESS NOTED OTHERWISE.
 2. PROVIDE APPROVED BACKFLOW PREVENTER FOR WATER SUPPLY LINES TO ICE MACHINE, SODA DISPENSER, CARBONATORS, TEA URN AND COFFEE MAKE, ETC.
 3. PROVIDE SAFETY MIXING VALVE FOR LAVATORIES WATER SUPPLY. SET MIXING VALVE TO 110 DEGREES.

PLUMBING ABBREVIATIONS			
1COMP	1 COMPARTMENT SINK	LAV	LAVATORY SINK
2COMP	2 COMPARTMENT SINK	MS	MOP SINK
3COMP	3 COMPARTMENT SINK	OSD	OPEN SITE DRAIN
CH	CONDENSER	PF	POT FILLER
DS	DIPPER SINK	SS	SERVICE SINK
DW	DISHWASHER	ST	STEAM TABLE
FCO	FLOOR CLEAN OUT	V	VENT
FD	FLOOR DRAIN	VTR	VENT TO ROOF
GS	GLASS STORAGE	UGT	UNDERGROUND GREASE TRAP
GT	GREASE TRAP	UR	URNAL
HS	HAND SINK	W	WASTE
WHH	WATER HEATER	WC	WATER CLOSET
I	ICE BIN	WCO	WALL CLEAN OUT
ICE	ICE MACHINE		

KEYNOTE LEGEND	
P-2-1-8001	CONNECT TO EXISTING DOMESTIC WATER SERVICE, CONTRACTOR TO Y.I.F. NEW 2" CW IN
P-2-1-8002	PROPOSED HOT WATER HEATER, PROVIDE THERMAL TRAP
P-2-1-8003	SAFE PAN FOR WATER HEATER
P-2-1-8004	PROVIDE THERMOSTATIC MIXING VALVE TO PUBLIC LAVATORIES
P-2-1-8005	WATER METER
P-2-1-8006	PROVIDE VACUUM BREAKER AT 7'-6" A.F.F.
P-2-1-8007	RELIEF VALVE
P-2-1-8008	SHUT OFF VALVE

DRAINAGE FIXTURE UNIT SCHEDULE						
FIXTURE	3 COMP SINK	1-COMP SINK	HAND SINK	MOP SINK	FD/OSD	TOTAL
D.F.U.	4	2	2	2	2	
# OF FIXTURES	1	1	1	1	5	10
TOTAL D.F.U. FIXTURES	4	2	2	2	12	22



1 FIRST FLOOR WATER SUPPLY DIAGRAM
 NOT TO SCALE

DOB STAMP

NO.	REVISIONS/SUBMISSIONS	DATE
	FOR ZONING	-/-
	FOR PERMIT	-/-

DRAWN BY: -- CHECKED BY: JJ

SEAL

ENGINEER

LOCATION:
GARLIC AND CHILI
 1512 N. LASALLE DR
 CHICAGO, IL 60610

DRAWING TITLE:
PLUMBING SUPPLY RISER DIAGRAMS

PROJECT: **17-C-50**

MTG 1/18/18

P-200.1

Chicago Building Design, P.C.
 770 N. LaSalle St., Suite 801, Chicago, Illinois 60654
 3241 St. Thomas Street, New Orleans, LA 70115
 P: 312.492.9007 F: 312.492.9044 E: info@cbdarchitects.com

CBD ARCHITECTS