

2731-41 N Milwaukee Avenue, Chicago, IL 60647

FOR LEASE | 1,274-3,093 Sq Ft



MILLER
CHICAGO

Andrea Miller

312.513.8333

andrea@millerchicagorealestate.com

Logan Square

2731-41 N Milwaukee Avenue

Chicago, IL 60647

PROPERTY HIGHLIGHTS



Site Details:

Listing Type: For Lease
Property Type: Retail
Size: 1,274-3,093 Sq Ft
Zoning: C1-5
Alderman: Rosa



Property Details:

- 1st floor retail spaces available in prime location on Milwaukee Avenue
- Located in the heart of Logan Square, directly next to the Spaulding entrance of the Logan Square Blue Line stop
- High-visibility location with over 13,100 vehicles per day & a walk score of 96
- Light-filled spaces feature floor to ceiling windows, high ceilings & exposed ductwork throughout
- Join the eclectic mix of businesses on the 2700 block of the "hipster highway"

Transportation:

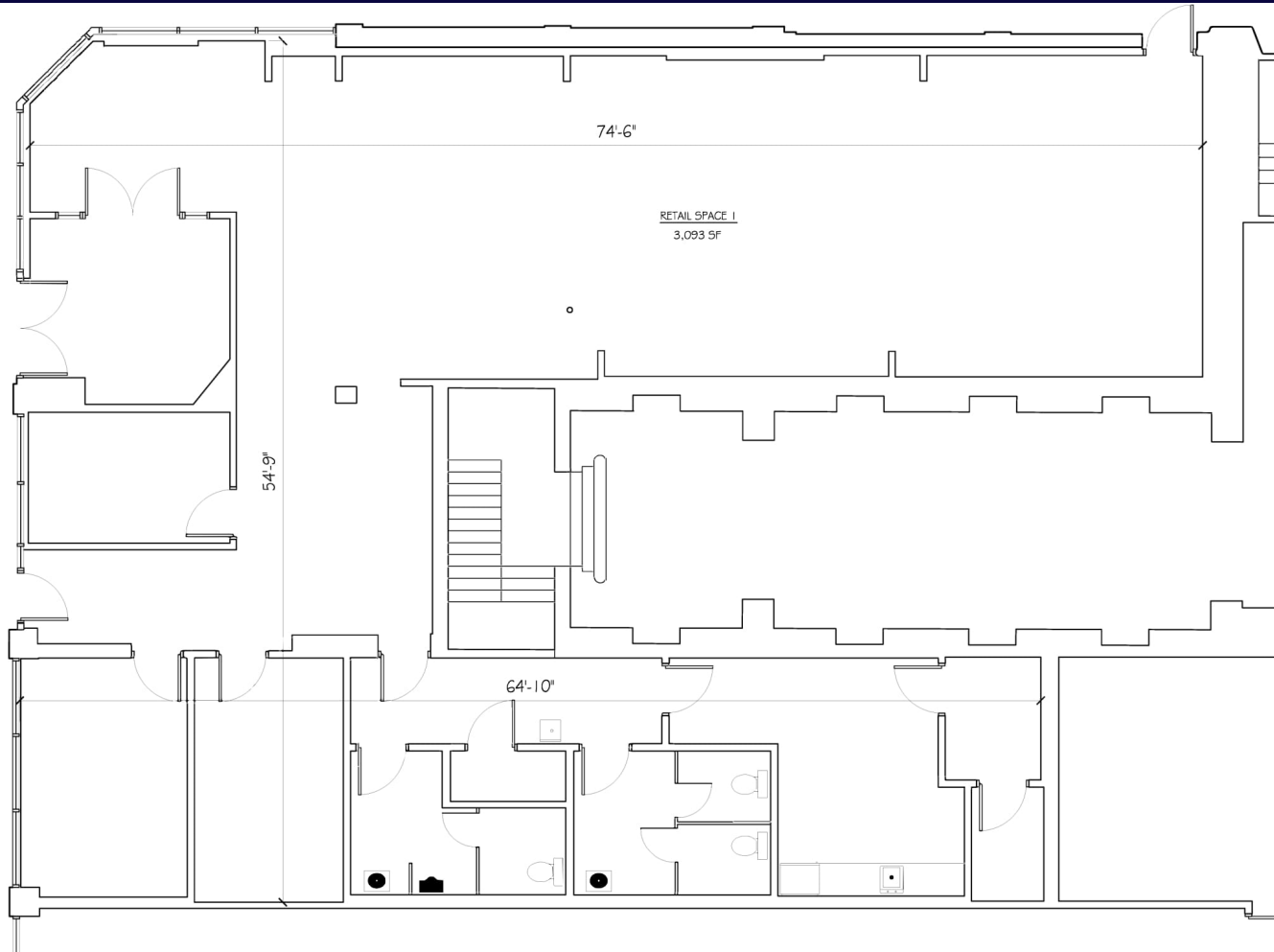
- Located on CTA #56 Milwaukee & Spaulding bus routes
- 0.1 mile from #76 Kimball/Homan bus
- Steps away from CTA Blue line Logan Square station

Logan Square

2731-41 N Milwaukee Avenue

Chicago, IL 60647

FLOOR PLAN: 2737 - 41 N MILWAUKEE

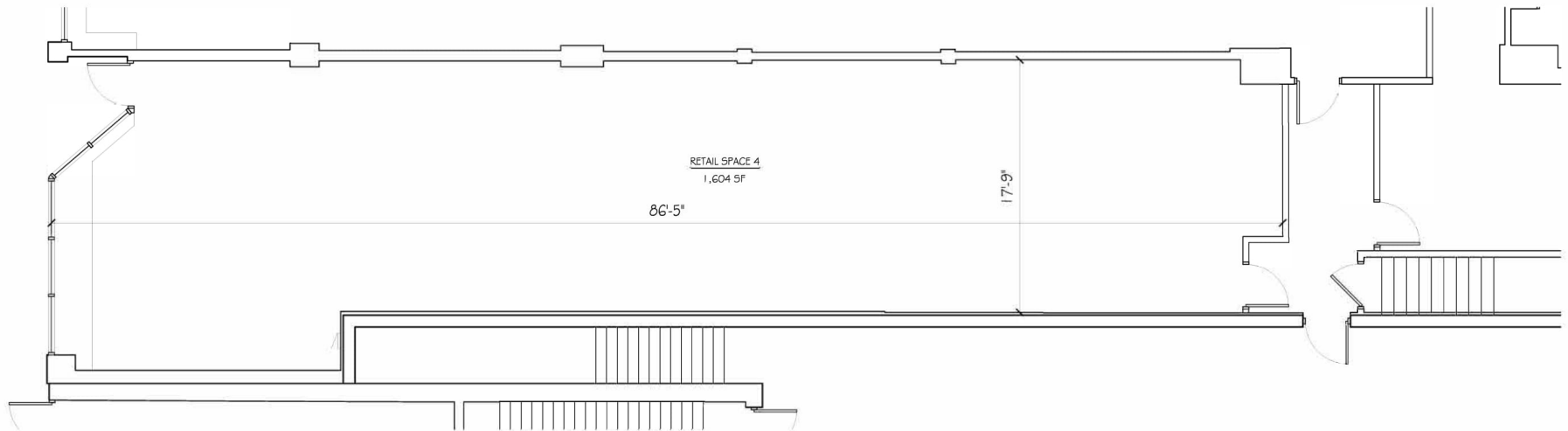


Logan Square

2731-41 N Milwaukee Avenue

Chicago, IL 60647

FLOOR PLAN: 2731 N MILWAUKEE



RETAIL SPACE 4

SCALE: 1/8" = 1'-0"

Logan Square

2731-41 N Milwaukee Avenue

Chicago, IL 60647

AREA MAP

