

2491-2505 N Milwaukee

Logan Square

Chicago, IL 60647

FOR LEASE 860 - 1,860 SF

Logan Square Retail - NEW CONSTRUCTION



Excellent location on Milwaukee Av, located 0.3 miles to the California Blue Line stop, 0.5 miles to the Logan Square Blue Line stop.

MILLER
CHICAGO

www.millerchicagorealestate.com

Andrea Miller

312 513 8333

andrea@millerchicagorealestate.com

Property Highlights

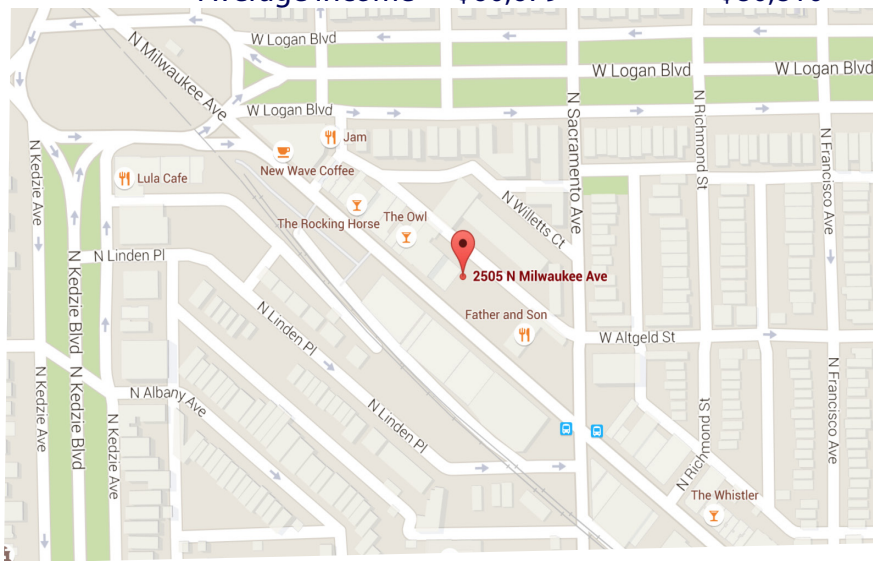
2491-2505 N Milwaukee

Logan Square
Chicago, IL 60647

DEMOGRAPHICS

(2014 Estimates)

	1 Mile	3 Mile
Population	65,198	482,553
Households	24,653	183,998
Average Income	\$60,679	\$80,810



Listing Type: For Lease
Property Type: Retail / Office
Lease Type: NNN
Size: 1,860 Sq Ft
Min. Divisible: 860 Sq Ft
Max Contiguous: 1,860 Sq Ft
Ceiling Heights: 15'
Basement: None
Year Built: 2014
Parking: Street Parking
Electrical Service: 200 Amp / 400 Amp

Highlights:

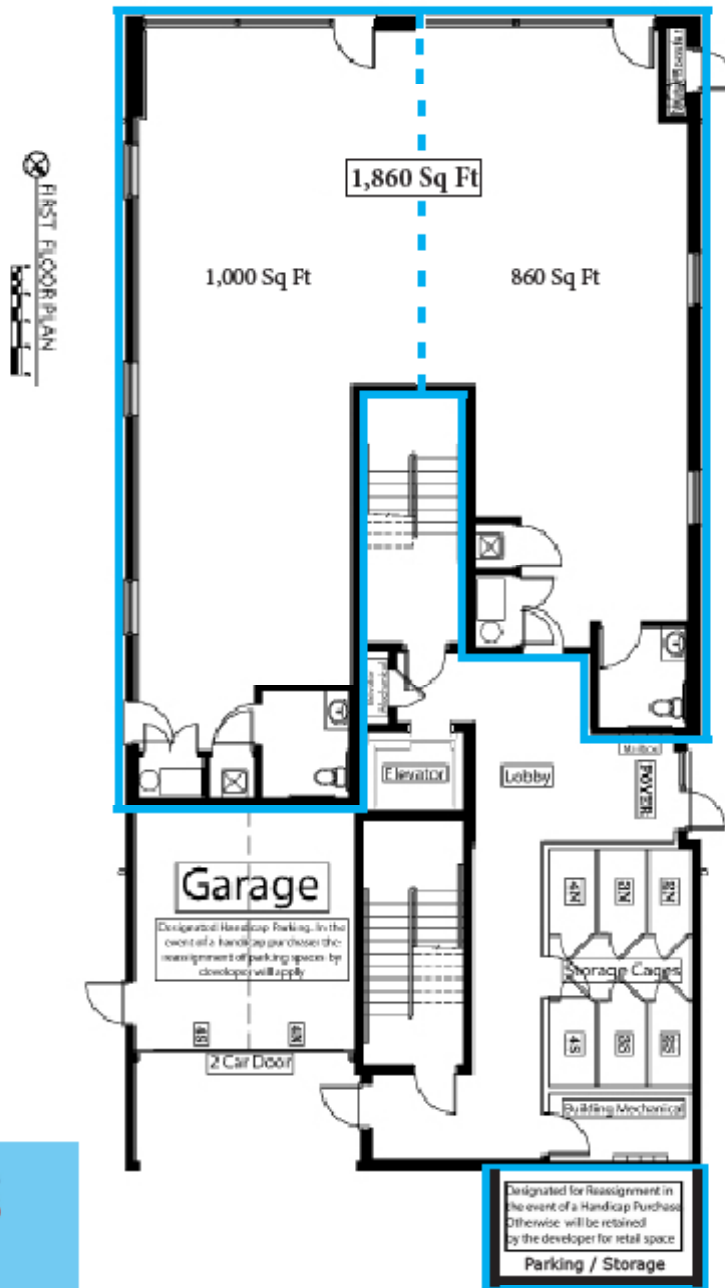
- New Construction space with large storefront windows and 15ft ceilings!
- Excellent location on Milwaukee Avenue in Logan Square. Directly across the street from the new Mega Mall development that will be opening in 2015-2016!
- 1,860 Sq Ft total, or space can be divided to two smaller spaces: 1) 860 Sq Ft and 2) 1,000 Sq Ft
- 400 Amp, 3-phase electrical on two 200-amp panels (one in each side of space, so demised spaces will be delivered with 200 amp each)
- Each demised space will have 4 tons A/C (8 tons total in 1,800 Sq Ft space)
- 1 garage parking space or storage space may be available at an additional cost
- Conveniently located to public transportation, 0.3 miles to the California stop of the Blue Line, 0.5 miles to the Logan Square stop of the Blue Line, ~300 ft to Fullerton Bus stop at Fullerton & Milwaukee, 400 ft to Milwaukee Avenue bus at Milwaukee & Sacramento, and 0.3 miles to the DIVVY bike station at California & Milwaukee

Site Plan

2491-2505 N Milwaukee

Logan Square
Chicago, IL 60647

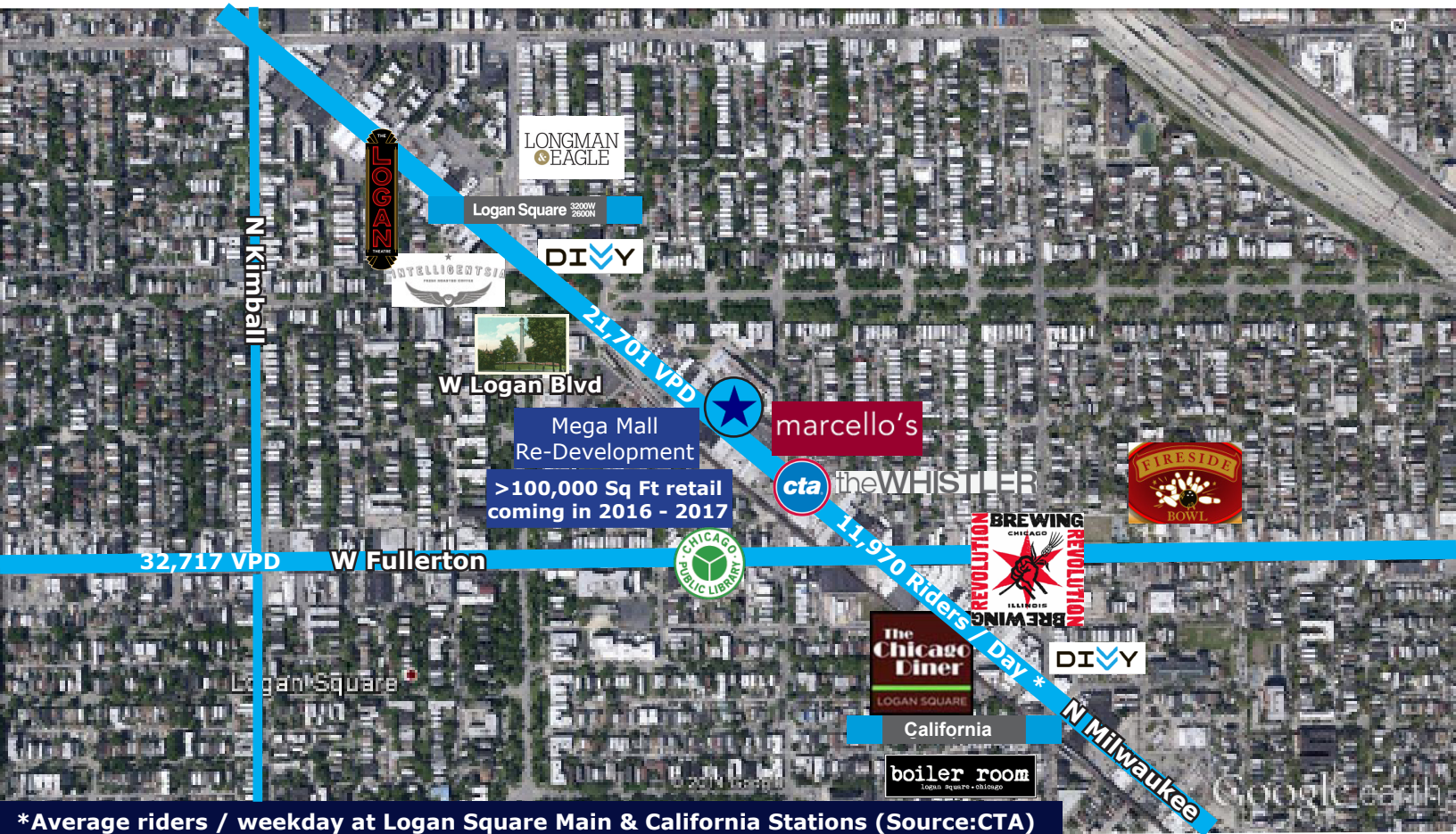
2491 N Milwaukee



Area Retail Map

2491-2505 N Milwaukee

Logan Square
Chicago, IL 60647



*Average riders / weekday at Logan Square Main & California Stations (Source:CTA)

— Site

Rendering 2491-2505 N Milwaukee

Logan Square
Chicago, IL 60647



MILLER
CHICAGO

www.millerchicagorealestate.com

Andrea Miller
312 513 8333
andrea@millerchicagorealestate.com