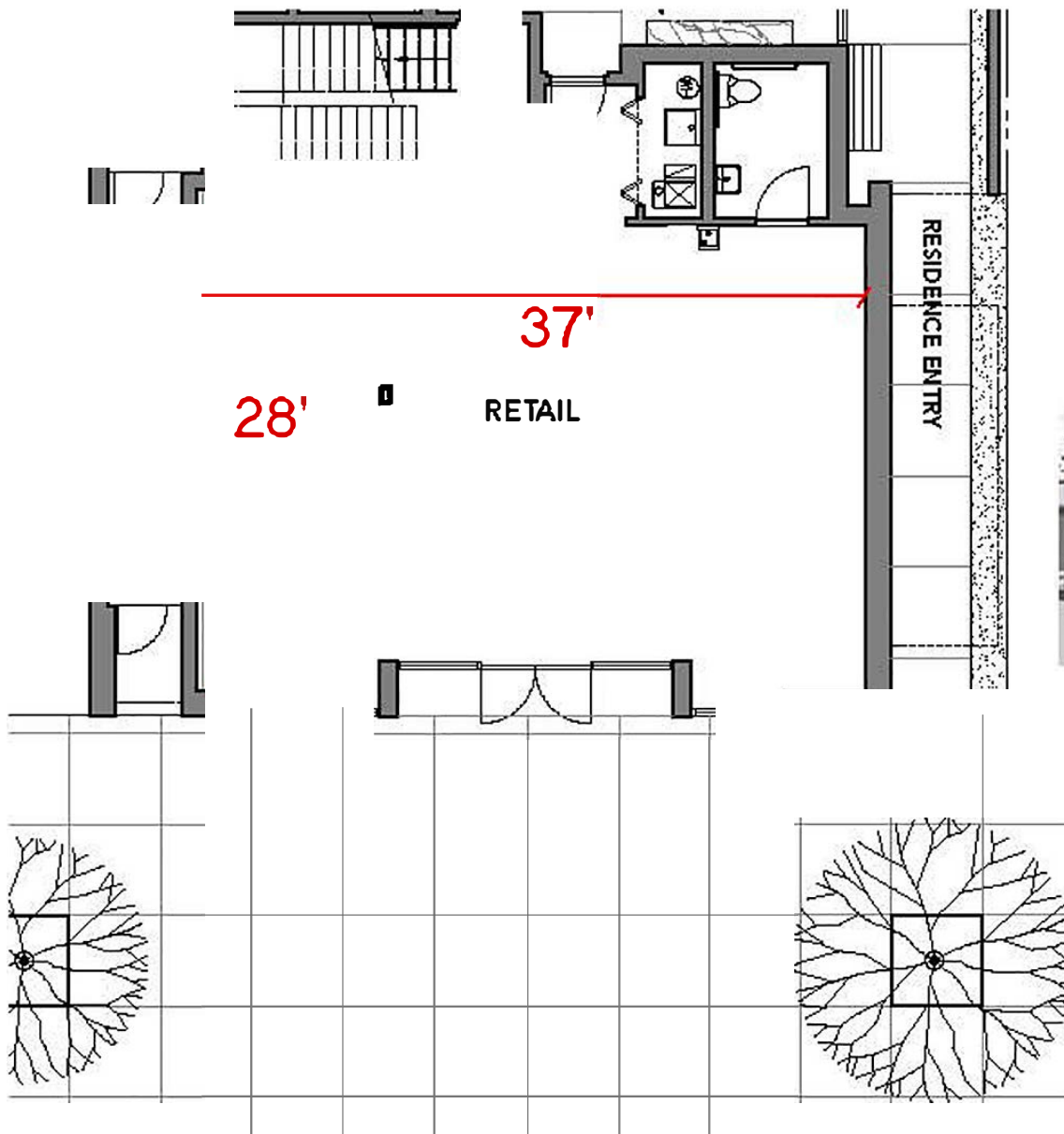


2028 WEST DIVISION

WICKER PARK

Retail



- ♦ Extra wide open floor plan
- ♦ 1231 square feet
- ♦ Division street exposure
- ♦ Expansive walls of windows
- ♦ Bathroom with Duravit sink
- ♦ 11 foot ceilings
- ♦ High visibility street with abundant traffic
- ♦ Steps to public transportation, restaurants, boutiques and more