

2100 Main Street

Melrose Park

Illinois 60160

FOR SALE 90,989 SF

Office/Flex - Former School/Training Facility



2 Blocks from the Melrose Park Metra Station
Office Building with Indoor Atrium, Auditorium & Gymnasium

Property Highlights

2100 Main Street

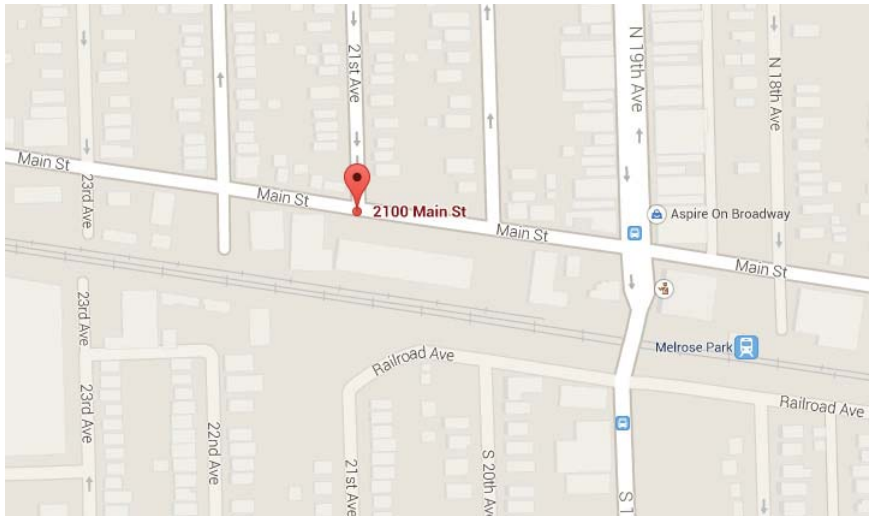
Melrose Park
Illinois 60160

DEMOGRAPHICS

(2014 Estimates)

	1 Mile	3 Mile
Population	27,325	168,063
Households	8,118	59,489
Average HH Income	\$54,818	\$69,656

Price: \$1,475,000
PIN: 15-10-110-020-0000,
15-10-110-021-0000, 15-10-110-022-0000
Property Type: Office / Flex Building Size:
90,989 Sq Ft
Ceiling Heights: 12' - 30'
Stories: 2 plus basement Basement:
Full, Finished
Parking: 30 exterior spaces, plus vacant
lot across the street

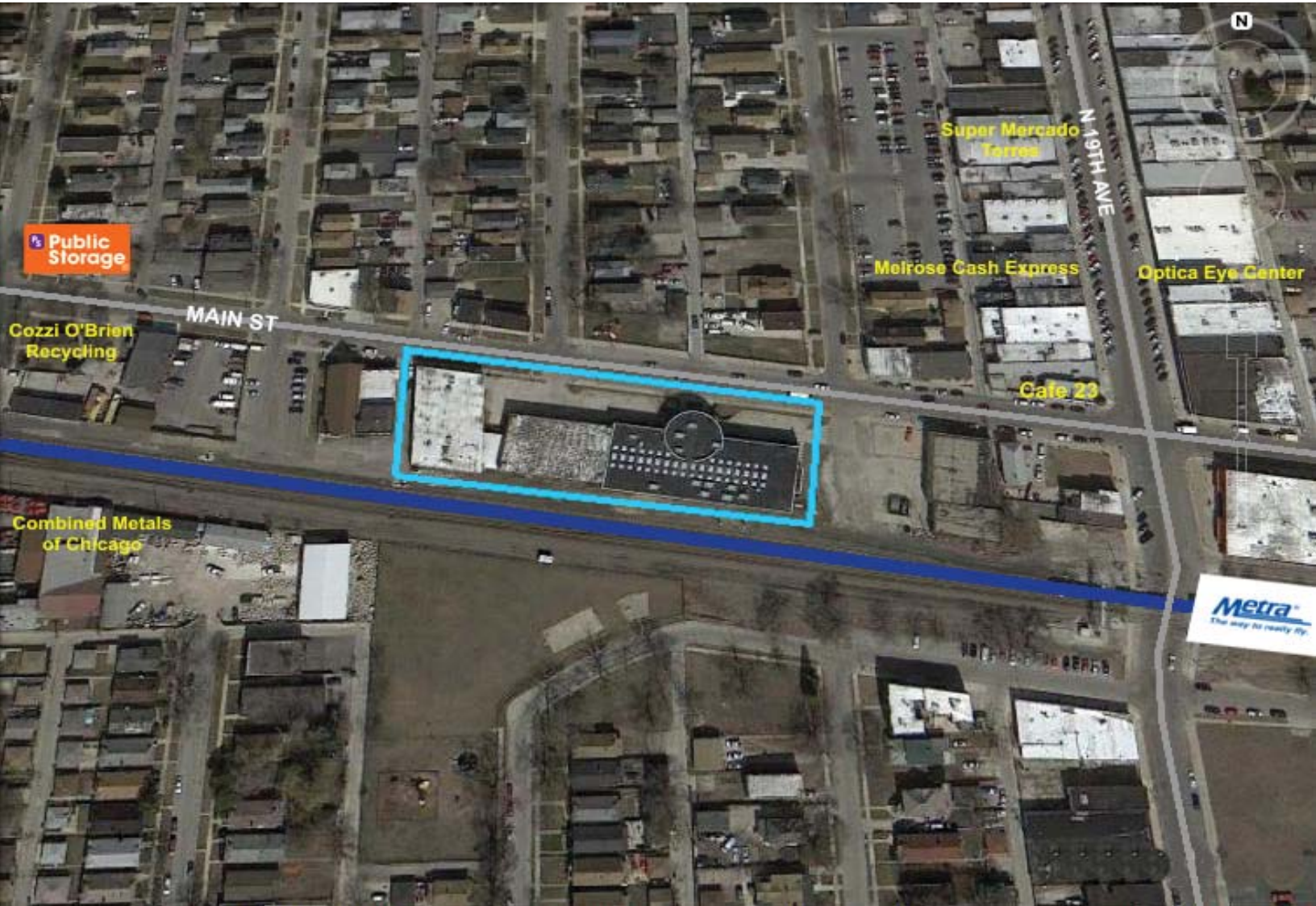


- Convenient location on Main Street in Melrose Park, 2 blocks to Melrose Park Metra station
- Ideal space for office/flex – former school / training facility that could be easily converted to office, medical office, wellness center, or industrial / flex space
- Auditorium seats approximately 200
- 23 classrooms / offices with large windows and glass walls facing the interior atrium, maximizing natural light into the space.
- Fully ADA accessible with elevator and wide staircases on both ends of building
- Separate warehouse / gymnasium with commercial kitchen and atrium area
- Large circular open office / meeting area (previously used as school library) with full floor to ceiling windows
- Approximately 20 outdoor parking spaces
- Property also includes an additional vacant lot across Main Street that could be used as a park / playground area or additional parking



Area Map 2100 Main Street

Melrose Park
Illinois 60610



Property Photos 2100 Main Street

Melrose Park
Illinois 60160



MILLER
CHICAGO

www.millerchicagorealestate.com

Andrea Miller
312 513 8333
andrea@millerchicagorealestate.com