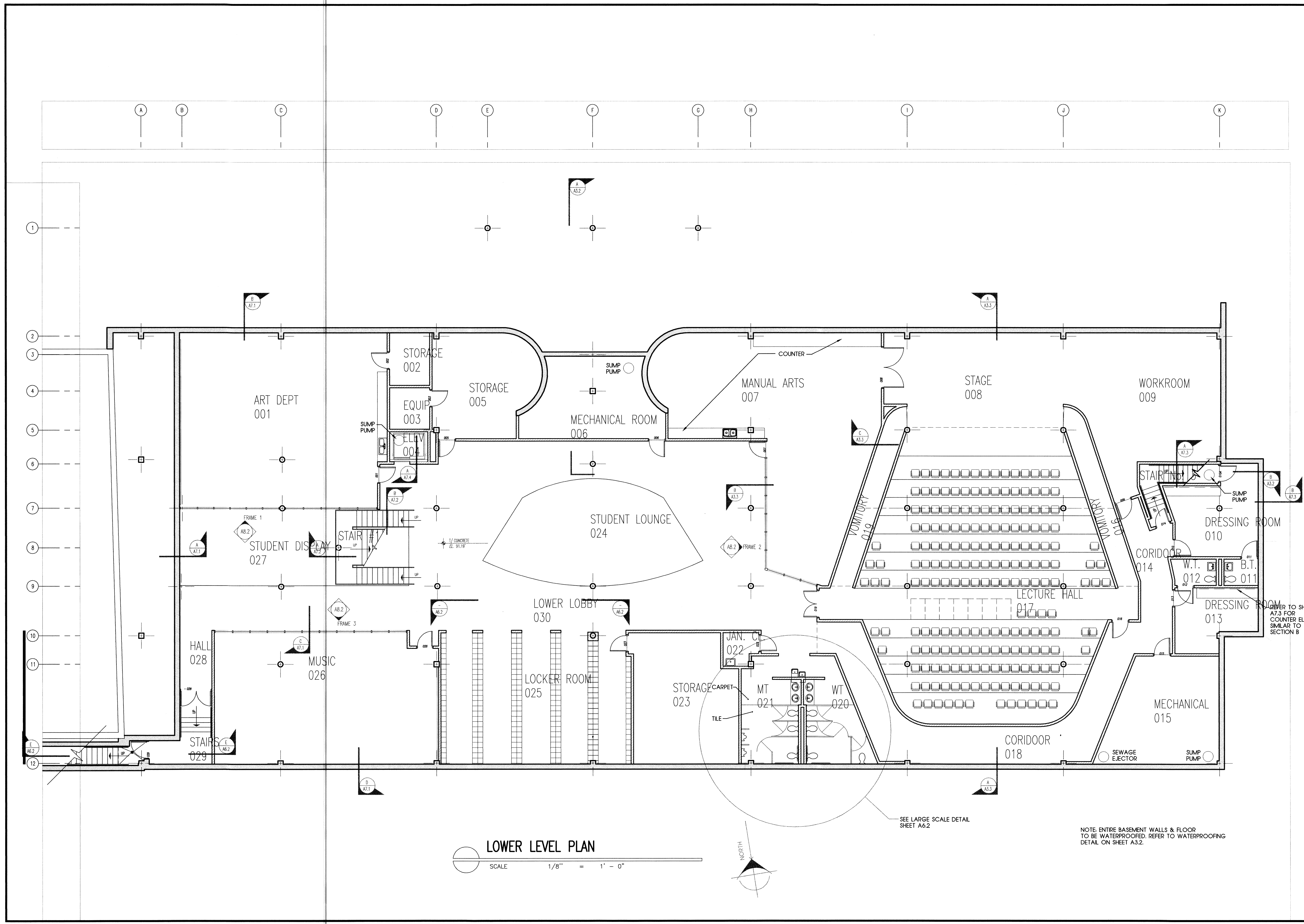


BELLI & BELL
ARCHITECTS & ENGINEERS
INCORPORATED

BELLI & BELL
OF MISSOURI
INCORPORATED

ILLINOIS OFFICE
39 SOUTH MILWAUKEE AVENUE
WHEELING ILLINOIS 60690



NO.	DATE	DESCRIPTION	BY	REVISIONS

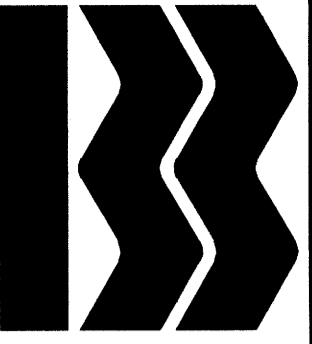
COMM. NO.	1476
DATE	08/01/99

LOWER LEVEL PLAN
McNELLY SCHOOL ADDITION
FIRST BAPTIST CHURCH OF MELROSE PARK, ILLINOIS

SHEET **A2.0** OF

LOWER LEVEL PLAN
SCALE 1/8" = 1'-0"

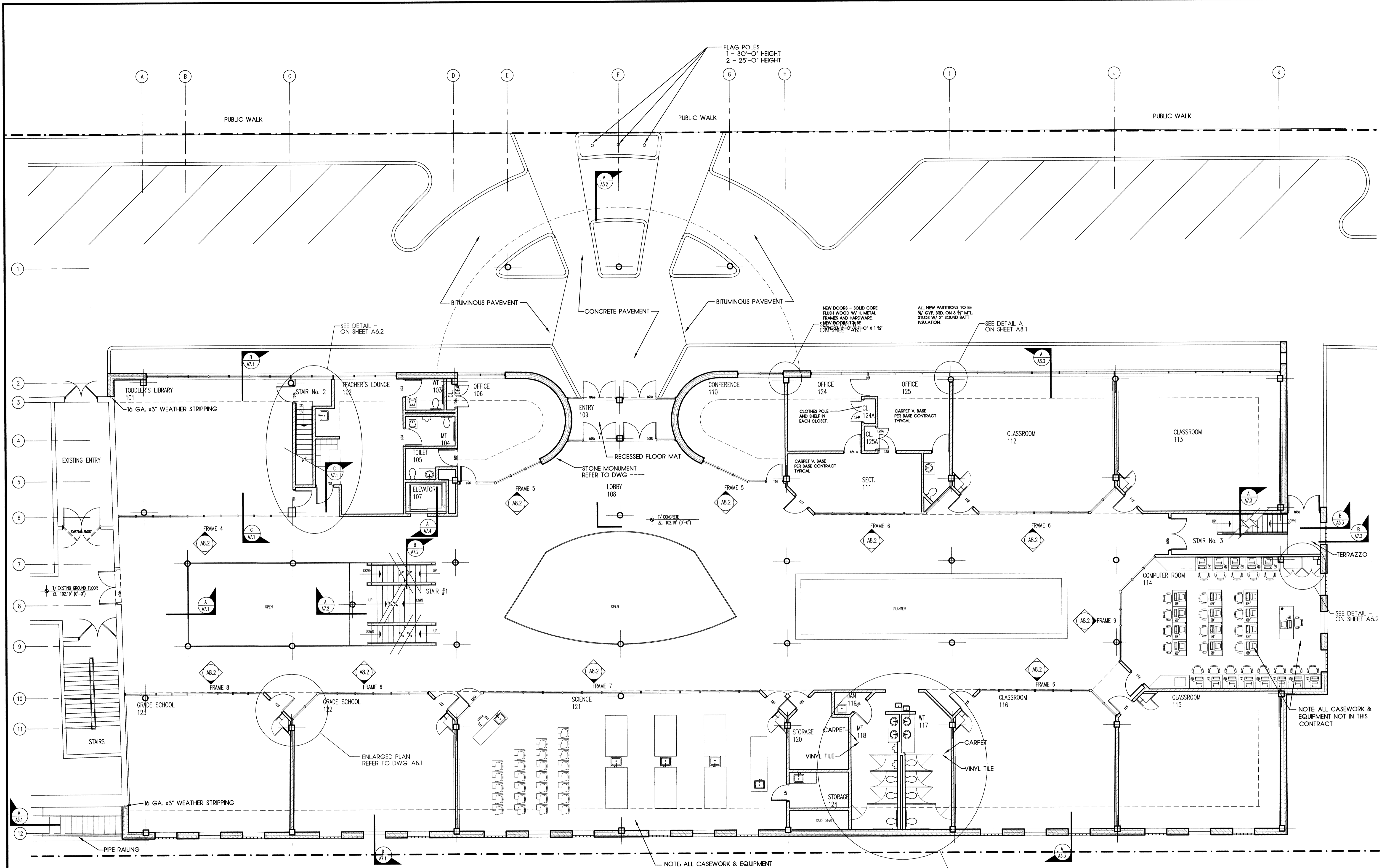
NOTE: ENTIRE BASEMENT WALLS & FLOOR TO BE WATERPROOFED. REFER TO WATERPROOFING DETAIL ON SHEET A3.2.



BELLI & BELL
ARCHITECTS & ENGINEERS
INCORPORATED

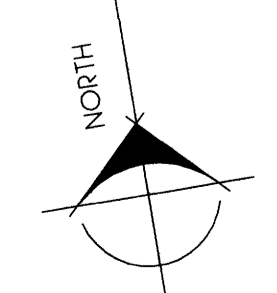
BELLI & BELL
OF MISSOURI
INCORPORATED

ILLINOIS OFFICE
39 SOUTH MILWAUKEE AVENUE
WHEELING ILLINOIS 60690



GROUND FLOOR PLAN

SCALE 1/8" = 1' - 0"

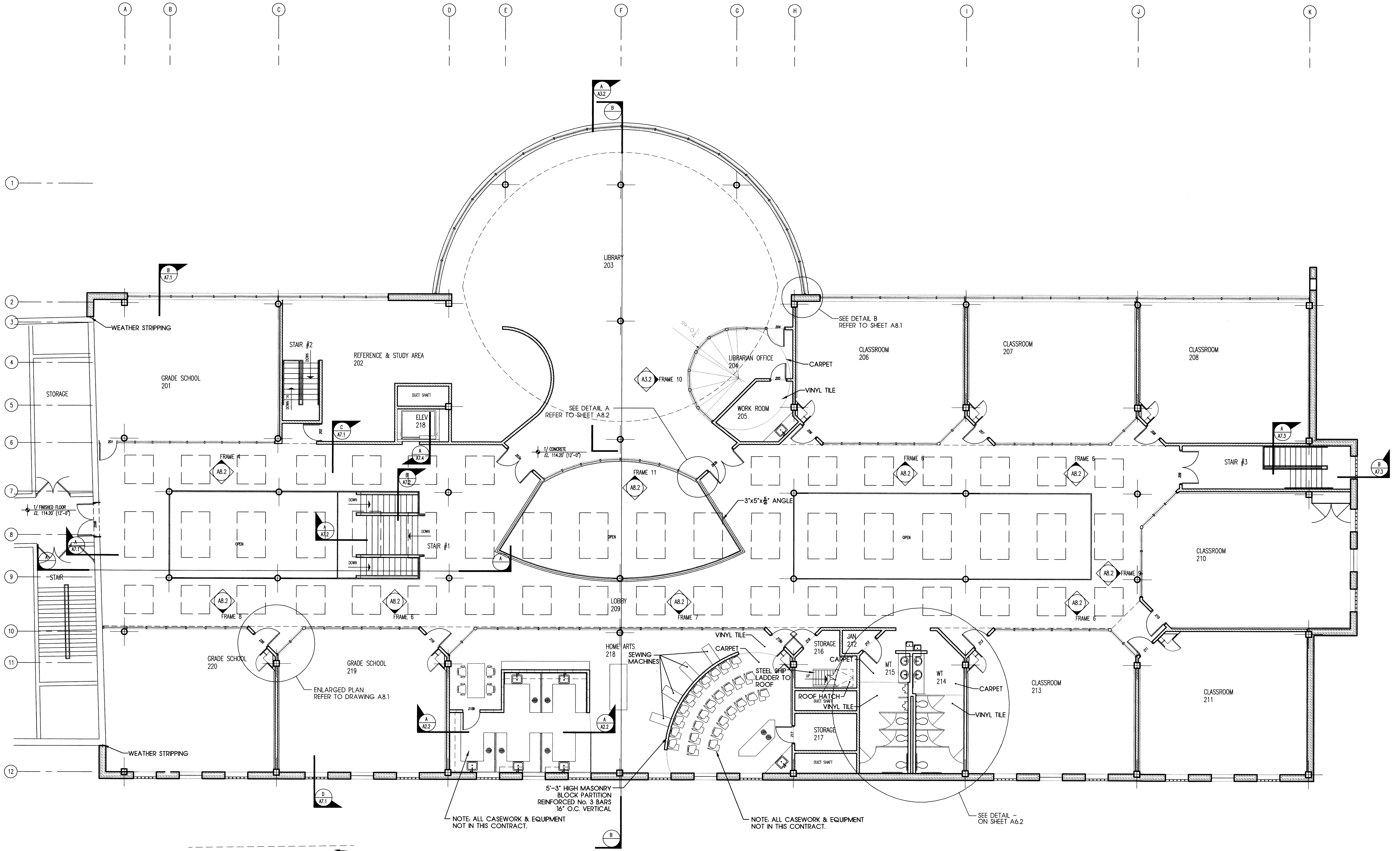


NO.	DATE	DESCRIPTION	REVISIONS

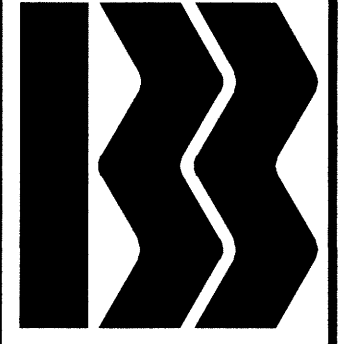
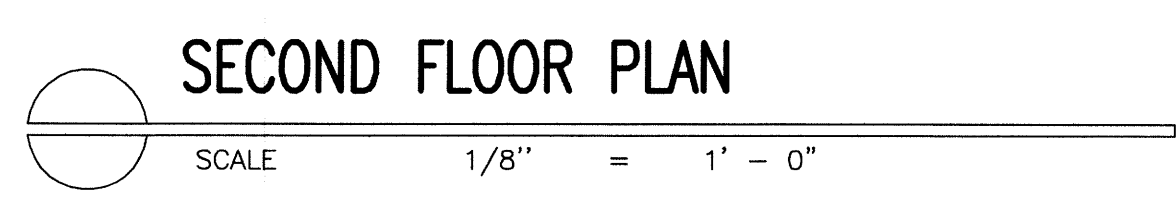
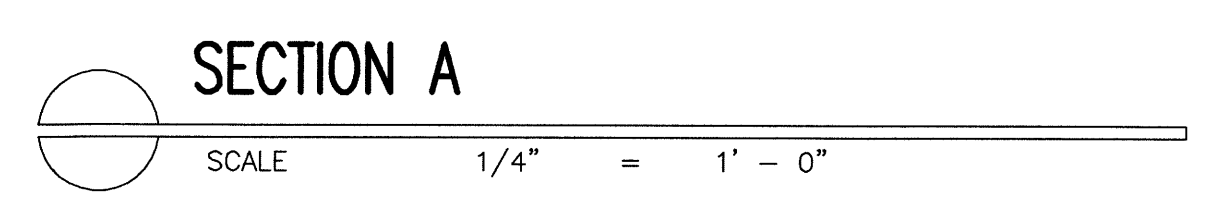
CLUMP NO.	1476
DATE	08/01/99

GROUND FLOOR PLAN
McNELLY SCHOOL ADDITION
FIRST BAPTIST CHURCH OF MELROSE PARK, ILLINOIS

SHEET
A2.1
OF



T:\McNelly\1476\images\6-16-99\RM218.tif



BELLI & BELLI
ARCHITECTS & ENGINEERS
INCORPORATED

BELLI & BELLI
OF MISSOURI
INCORPORATED

ILLINOIS OFFICE
39 SOUTH MILWAUKEE AVENUE
WHEELING ILLINOIS 60090

NO.	DATE	DESCRIPTION	BY	REVISED

COMM. NO. 1476
DATE 08/01/99

SECOND FLOOR PLAN
McNELLY SCHOOL ADDITION
FIRST BAPTIST CHURCH OF MELROSE PARK, ILLINOIS
PROJECT

SHEET A2.2 OF